



27 May 2021

PRELIMINARY SATELLITE DERIVED ASSESSMENT



**Nyiragongo volcanic eruption,
Democratic Republic of The Congo & Rwanda**

 Status: New lava flow observed

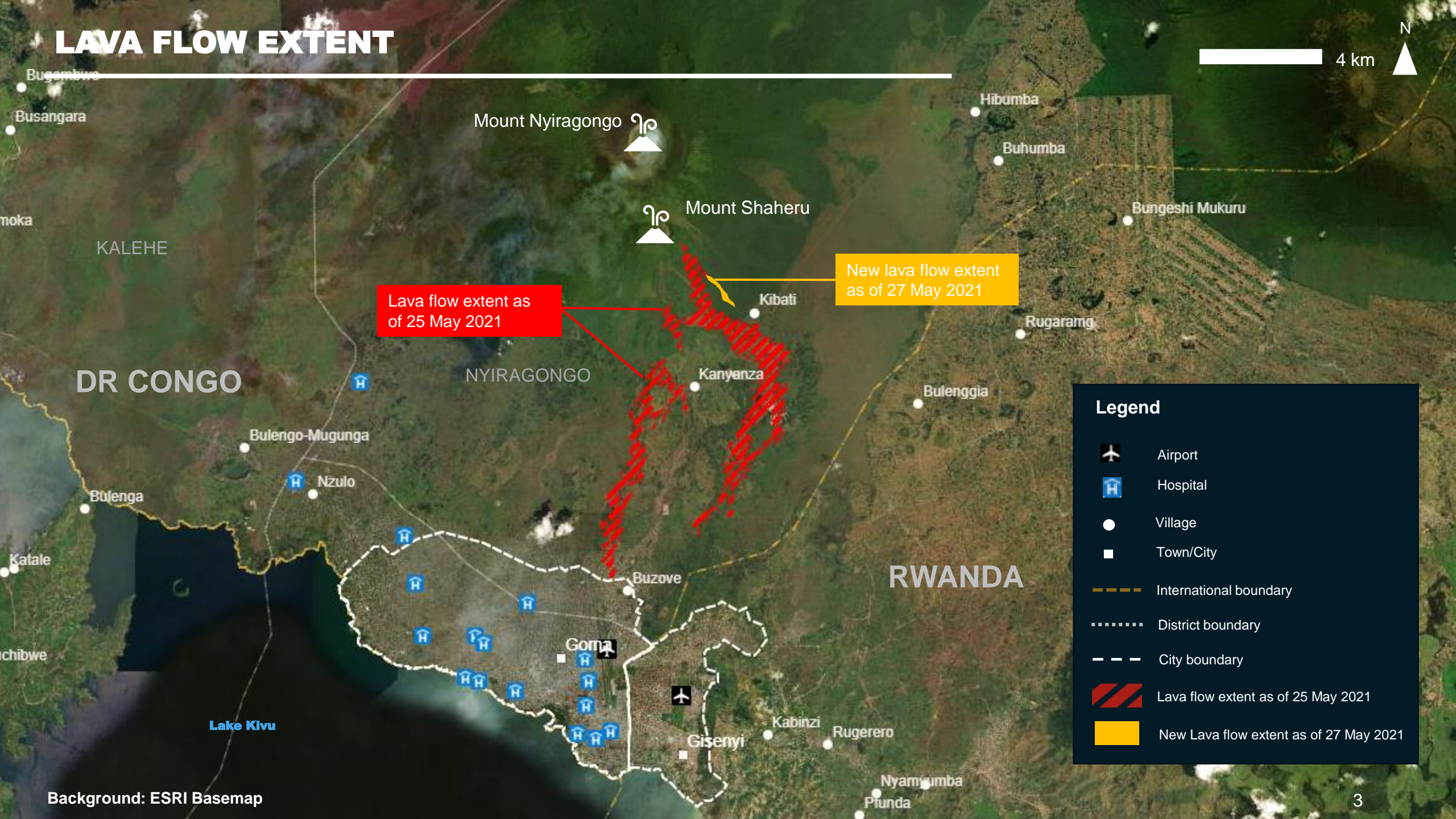
 Further action(s): continue monitoring



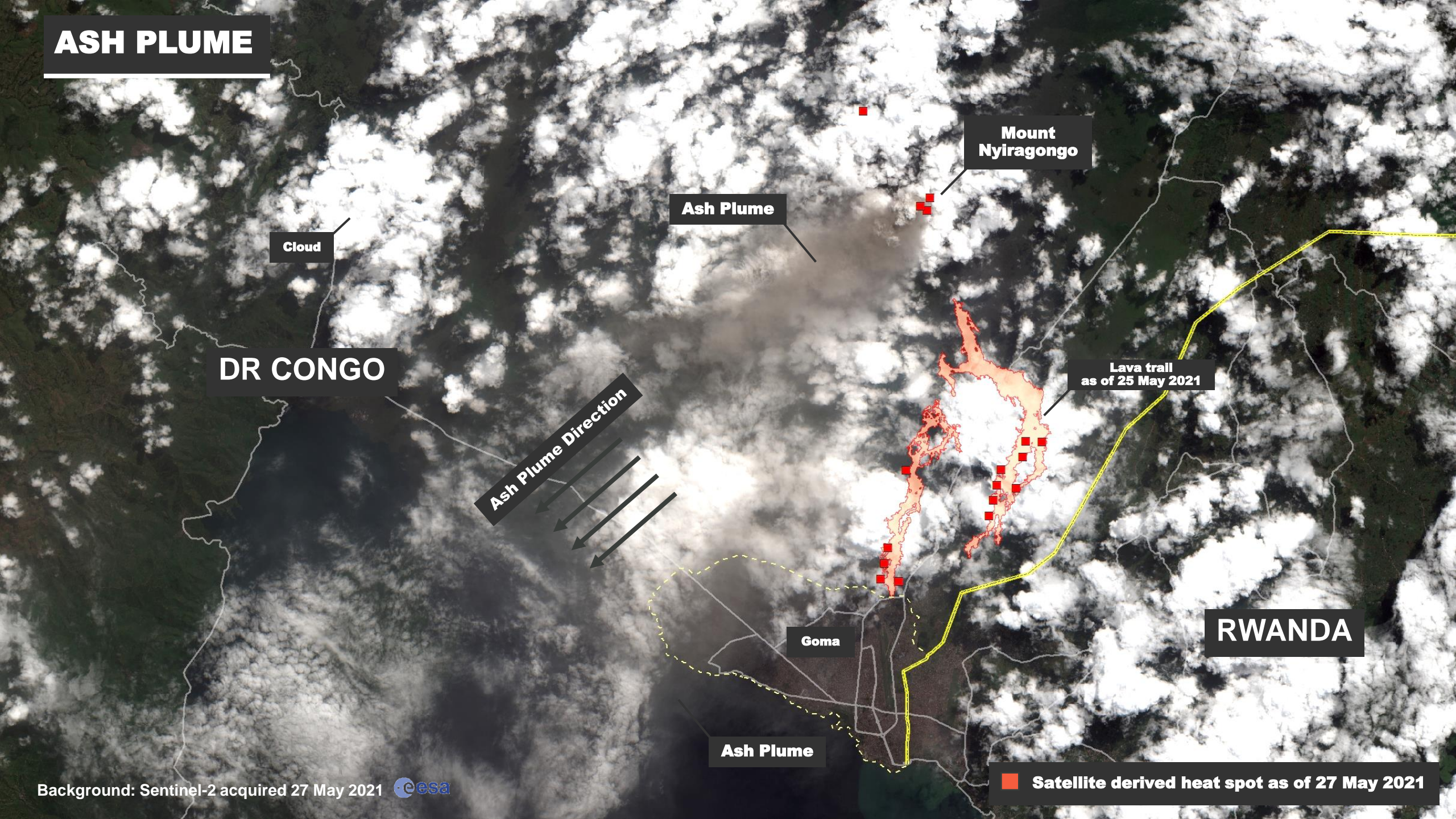
Democratic Republic of the Congo & Rwanda



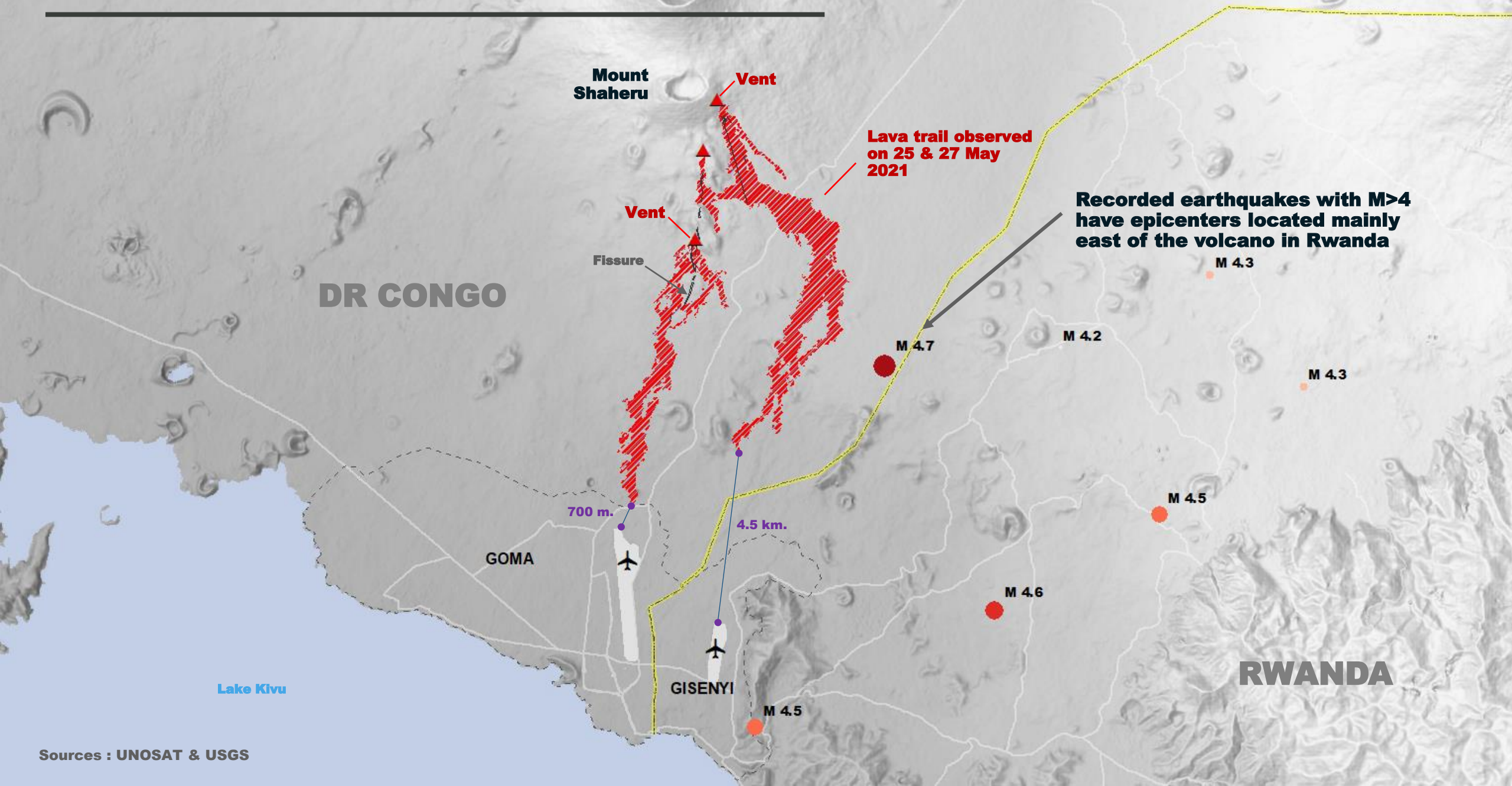
LAVA FLOW EXTENT



ASH PLUME

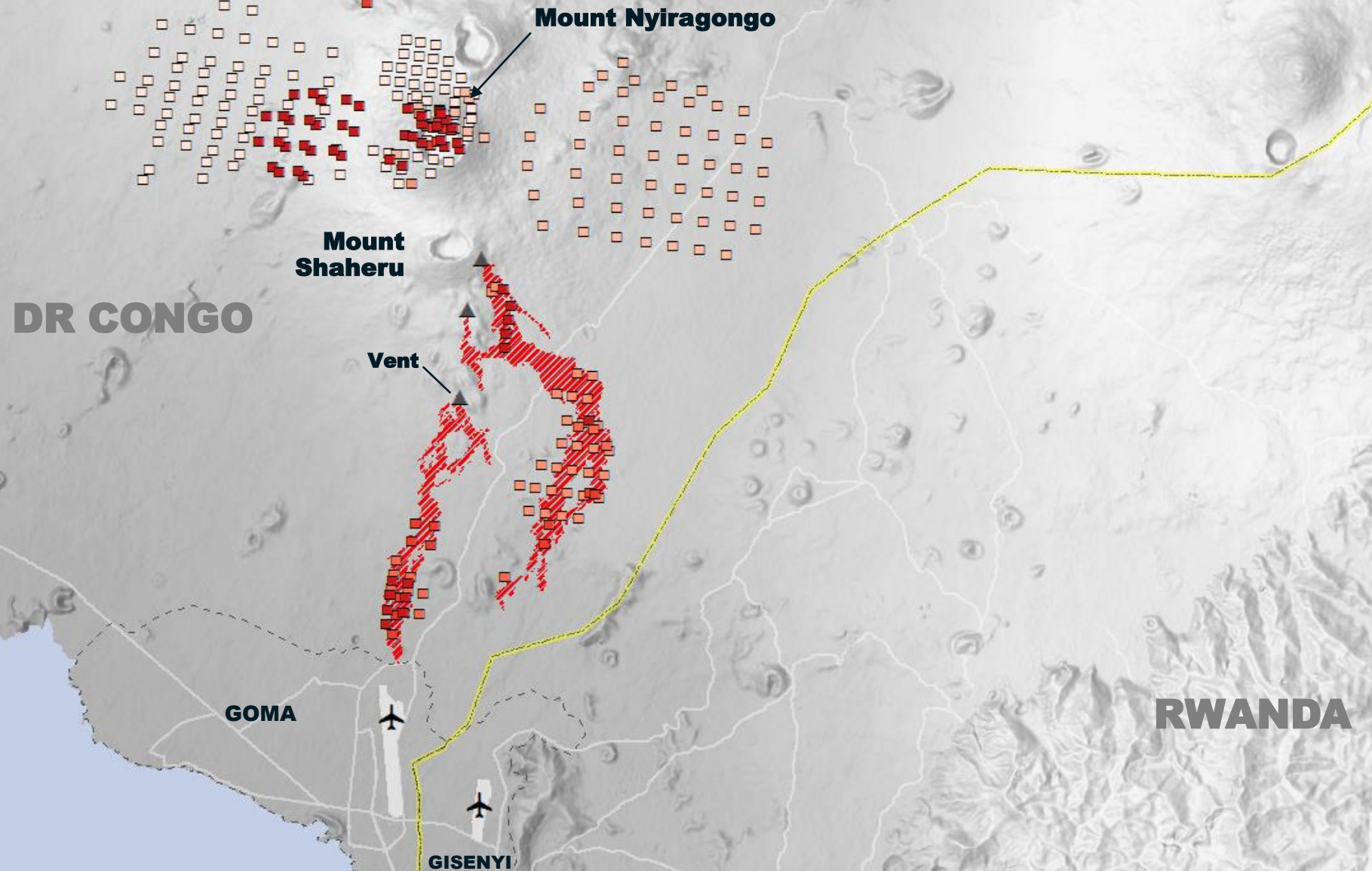
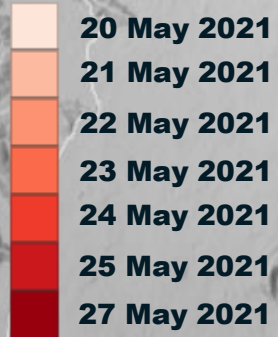


SUMMARY OF VOLCANIC INDUCED EFFECTS



EVOLUTION OF HOTSPOTS BETWEEN 20 – 27 MAY 2021

HOTSPOTS



Sources :

- Lava flow extent: UNOSAT
- Vents: USGS
- Hotspots: NASA FIRMS, Suomi-NPP and NOAA-20 (VIIRS)

SUMMARY OF FINDINGS

- New lava flow trail detected northwest of Kibati village as of 27 May 2021;
- Ash plume coming from Mount Nyiragongo moving towards the south-west as of 27 May 2021;
- The lava flow has stopped 700m from Goma airport (DRC) and 4.5km from Gisenyi airport (Rwanda) as of 27 May 2021;
- 3 vents identified south of Nyiragongo caldera.

COPYRIGHTS AND SOURCES

Data sources:

(1) Satellite Data (Post):

Sentinel-2/27 May 2021

Copyright: Contains modified Copernicus Sentinel data [2021]

SAOCOM-1A/27 May 2021

Copyright : SAOCOM Product CONAE - (2021). All Rights Reserved

Source: ESA

(2) Other data:

Lava flow extents: UNITAR-UNOSAT

Hotspots: NASA FIRMS, Suomi-NPP and NOAA-20 (VIIRS)

Epicenters : EMSC

Vents and fissures : USGS

Background: ALOS Global DSM, Esri Basemap and Sentinel2 (27 May 2021)

(3) Ancillary data:

Administrative boundaries: OCHA Congo

District town boundaries: WikiMapia

Populated place: OpenStreetMap

Analysis: UNITAR-UNOSAT

Production: UNITAR-UNOSAT



@UNOSAT



@UNITAR.unosat



UNOSAT, United Nations Institute for Training
and Research (UNITAR)
7 bis, Avenue de la Paix, CH-1202 Geneva 2,
Switzerland

T +41 022 917 4720
E unosat@unitar.org
www.unosat.org