



Freeport

Ground darker due to saturation

Marsh Harbor

Little Harbor

Ground darker due to saturation

Sentinel-1A Cross-polarization  
10 September 2019, 1110 UTC



Contains modified Copernicus Sentinel data 2019



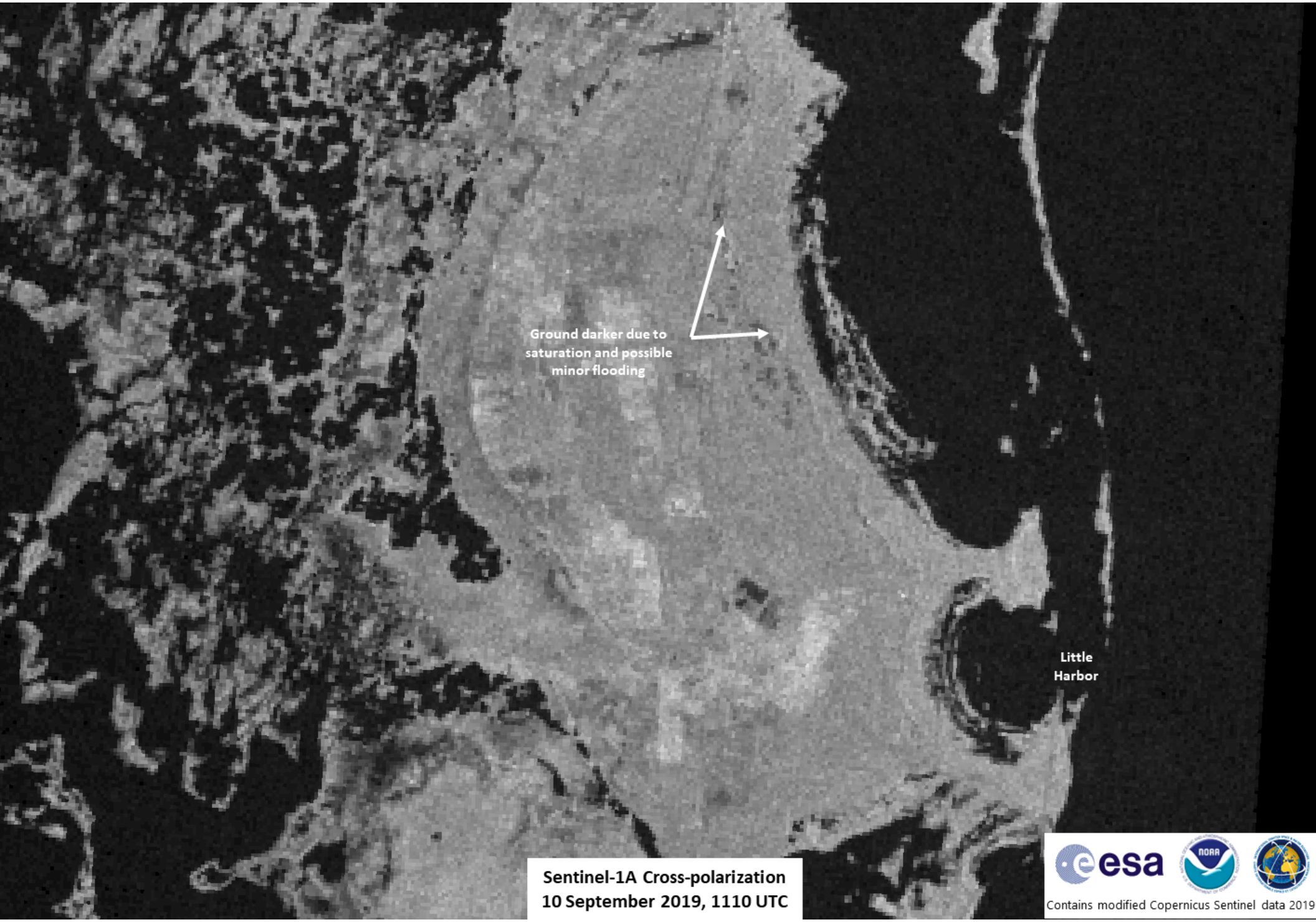
Ground darker due to saturation and possible minor flooding at Grand International Bahama Airport

Ground darker due to saturation

Some swollen rivers

Freeport





Ground darker due to saturation and possible minor flooding

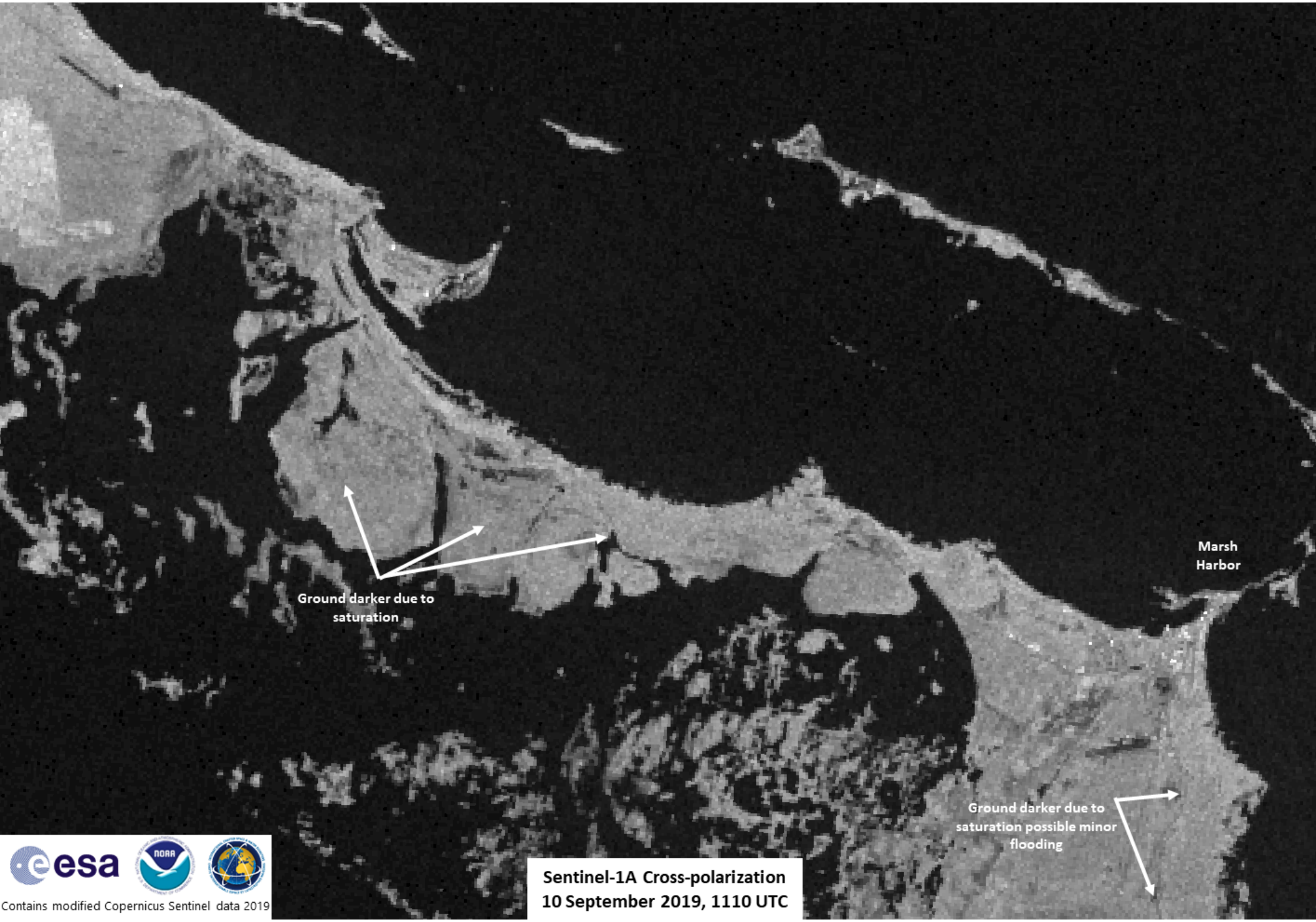


Little Harbor

Sentinel-1A Cross-polarization  
10 September 2019, 1110 UTC



Contains modified Copernicus Sentinel data 2019



Marsh Harbor

Ground darker due to saturation

Ground darker due to saturation possible minor flooding