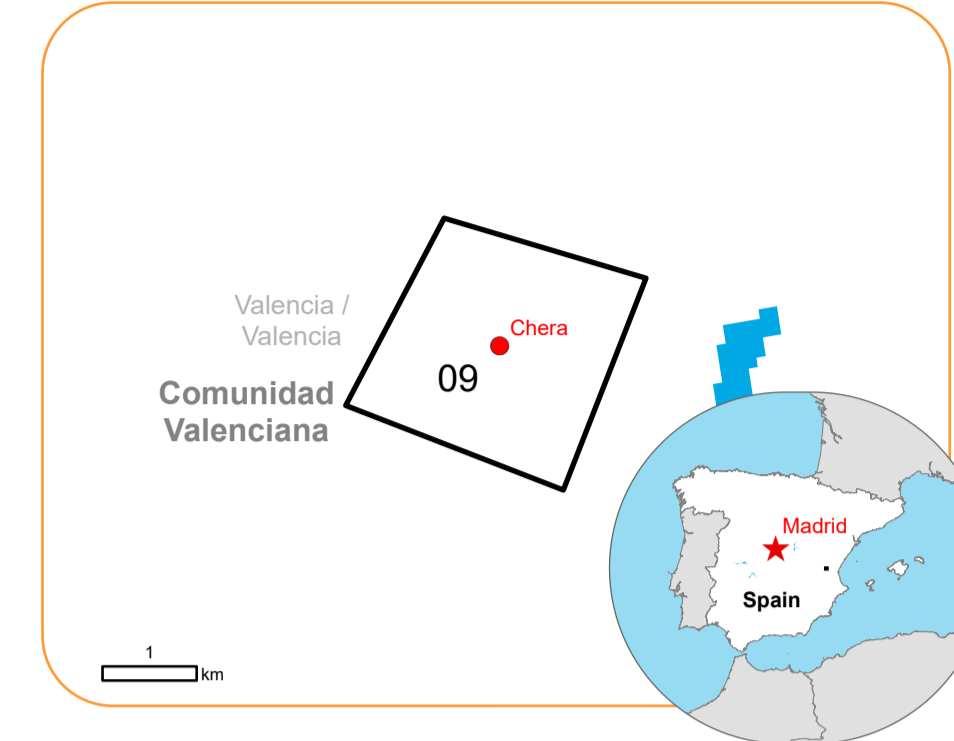


Situation as of 31/10/2024 10:22 UTC
Grading - Overview map 01



Flood trace 1.4 ha Potentially affected population ~ Not available

Affected Built-up and Transportations

Road 0.1 km Facilities 0.1 ha

- Crisis Information**
- General Information**
- Facilities Grading**
- Transportation Grading**
- Placenames**
- Hydrography**

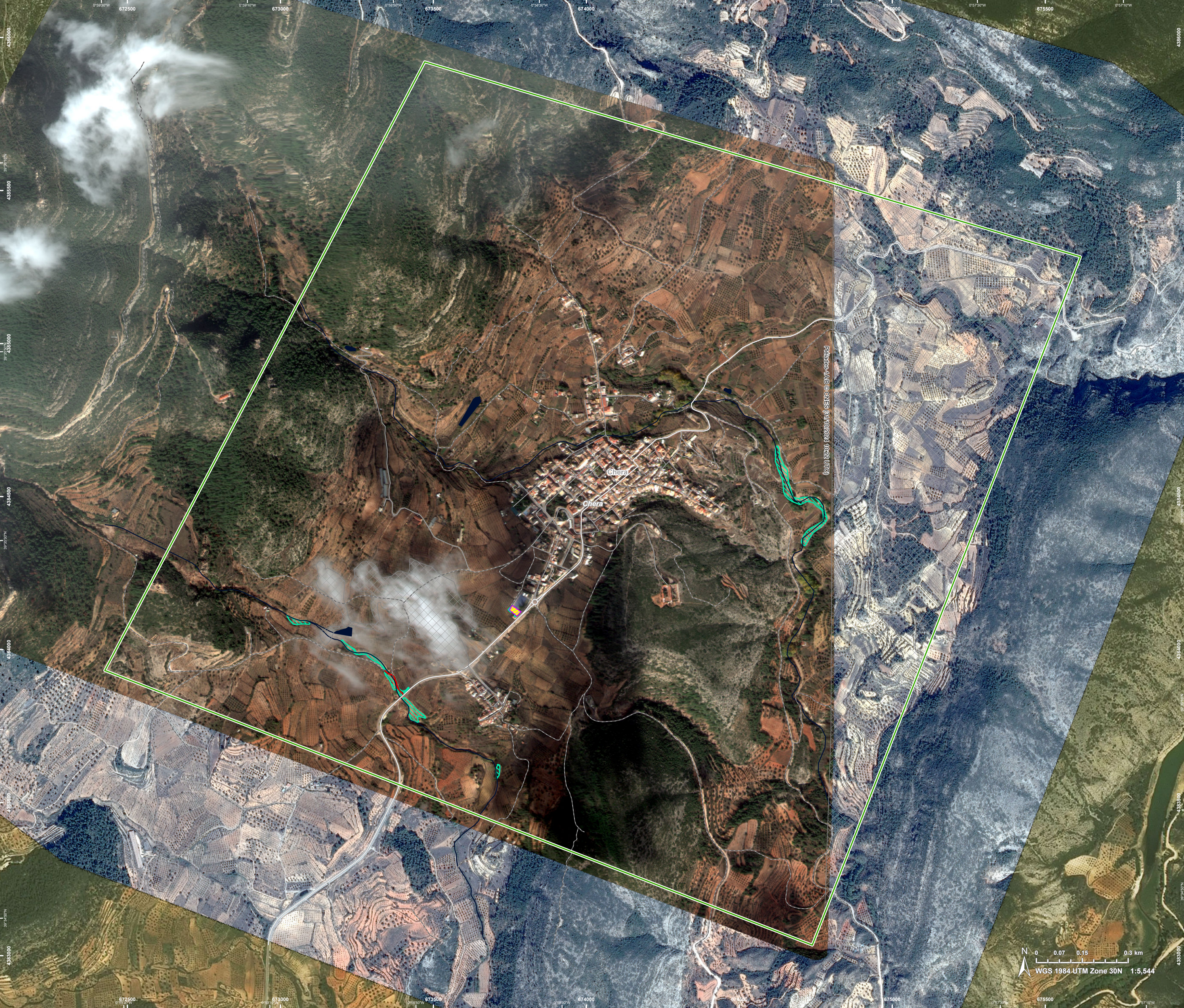
Event: On 29 October 2024 at 14:30 UTC, an extraordinary rainfall event affected the Levante region. High water levels in rivers caused flooding in Ribera Alta, Horta, La Plana de Utiel and Letur river. On 31 October 2024, extraordinary precipitation caused flooding in the Castellon Province area. Copernicus EMS Rapid Mapping is requested to provide emergency mapping of flood extent, Monitoring and classification damages emergency mapping.

Data sources and analysis: Pre-event image: Pléiades-1A/B © CNES (2024), distributed by Airbus DS (acquired on 04/10/2024 at 11:13 UTC, resolution 0.5 m). Post-event image: Pléiades-1A/B © CNES (2024), distributed by Airbus DS (acquired on 31/10/2024 at 10:22 UTC, resolution 0.5 m). This image is used as background image. All images are provided under COPERNICUS by the European Union and ESA, all rights reserved.

The thematic layer has been derived from post-event satellite image by means of visual interpretation.

Map produced by Planetek Hellas released by e-GEOS on the 11/11/2024.

Details on this activation and service conditions available through the QR code or at the link: <https://rapidmapping.emergency.copernicus.eu/EMSR773>



WGS 1984 UTM Zone 30N 1:5,544

Consequences within the AOI							
		Unit of measurement	Destroyed	Damaged	Possibly damaged*	Total affected**	Total in AOI
Flood trace		ha					1.4
Estimated population		Number of inhabitants				NA	~ 550
Built-up	Residential Buildings	No.	0	0	0	0	13
	Institutional	No.	0	0	0	0	1
	Buildings used as places of worship and for religious activities	No.	0	0	0	0	1
	Hotel buildings	No.	0	0	0	0	1
	Unclassified	No.	0	0	0	0	38
Transportation	Secondary Road	km	0	0	0	0	3.7
	Local Road	km	0	0	0	0	7.7
	Cart Track	km	0.1	0	0	0.1	20.9
Facilities	Settling Basin	ha	0	0	0	0	0.1
	Sport and recreation constructions	ha	0	0	0.1	0.1	0.4
	Local pipelines and cables	km	0	0	0	0	2.0
Land use	Shrub and/or herbaceous vegetation association	ha				0.7	193.7
	Heterogeneous agricultural areas	ha				0.5	223.4
	Permanent crops	ha				0.1	95.9
	Other	ha				0.02	25.6
	Forests	ha				0	7.2
* Presence of damage proxies and proximity with destroyed/damaged asset							
** Sum of all damage classes							

Disclaimer:

Full disclaimer and other helpful information available in the online manual:
<https://emergency.copernicus.eu/mapping/ems/online-manual-rapid-mapping-products>
 © European Union / Copernicus Emergency Management Service

Data Access:

All data displayed on the map(s), as well as the Physiography and Land Use - Land Cover layers, are available in the Crisis Information Package and the Base Layer Package (for reference data). The table above is available in editable format in the Crisis Information Package. All products and data are also available for download on the portal.

Estimated Population:

Estimated population is based on Copernicus Global Human Settlement Layer (GHSL) dataset. Additional population datasets and analysis are available in the summary table.

Data Sources:

Base Vector Layers: OpenStreetMap © OpenStreetMap contributors (2024), Wikimapia.org, GeoNames 2015, Corine Land Cover (CLC) 2018, EuroBoundaryMap 2017 ©EuroGeographics.
 Inset Maps: JRC 2013, GISCO 2010 © EuroGeographics, Natural Earth 2012, CCM River DB © EUJRC2007, GeoNames 2015.
 Digital Elevation Model (2m) © Spain National Data (2015).

Access to the portal

