



30 August 2024

PRELIMINARY SATELLITE-DERIVED FLOOD IMPACT ASSESSMENT



Feni City, Feni district, Chattogram Division, Bangladesh


 Status: Inundated structures/houses and croplands observed.

 Further action(s): Continue monitoring

Bangladesh



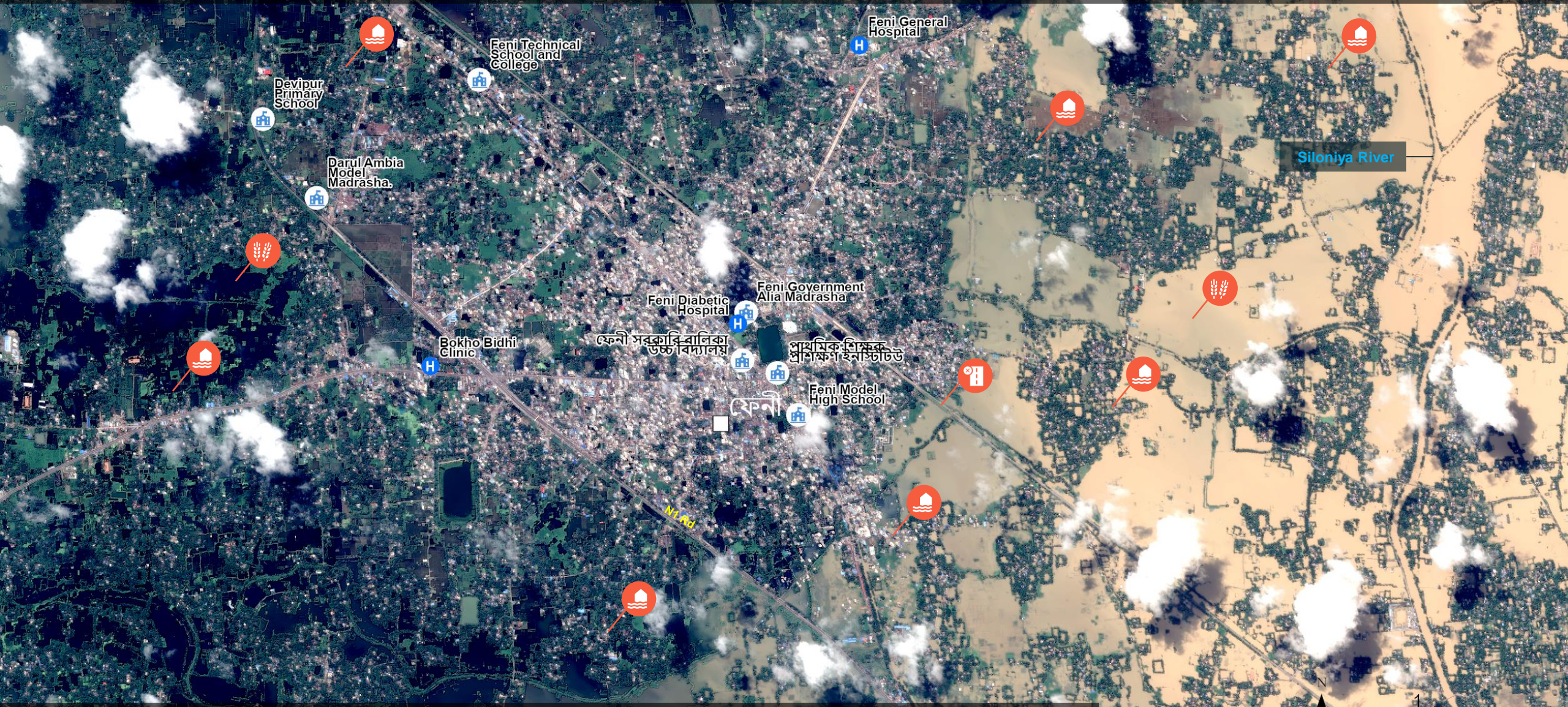
AOI- Feni City,
Feni District

 Area of interest



FINI CITY, FENI DISTRICT, CHATTROGRAM DIVISION

Inundated structures/houses and croplands



Pleiades image acquired on 29 August 2024 at 04:26 UTC
Image center: 91°23'55"E 23°0'46"N

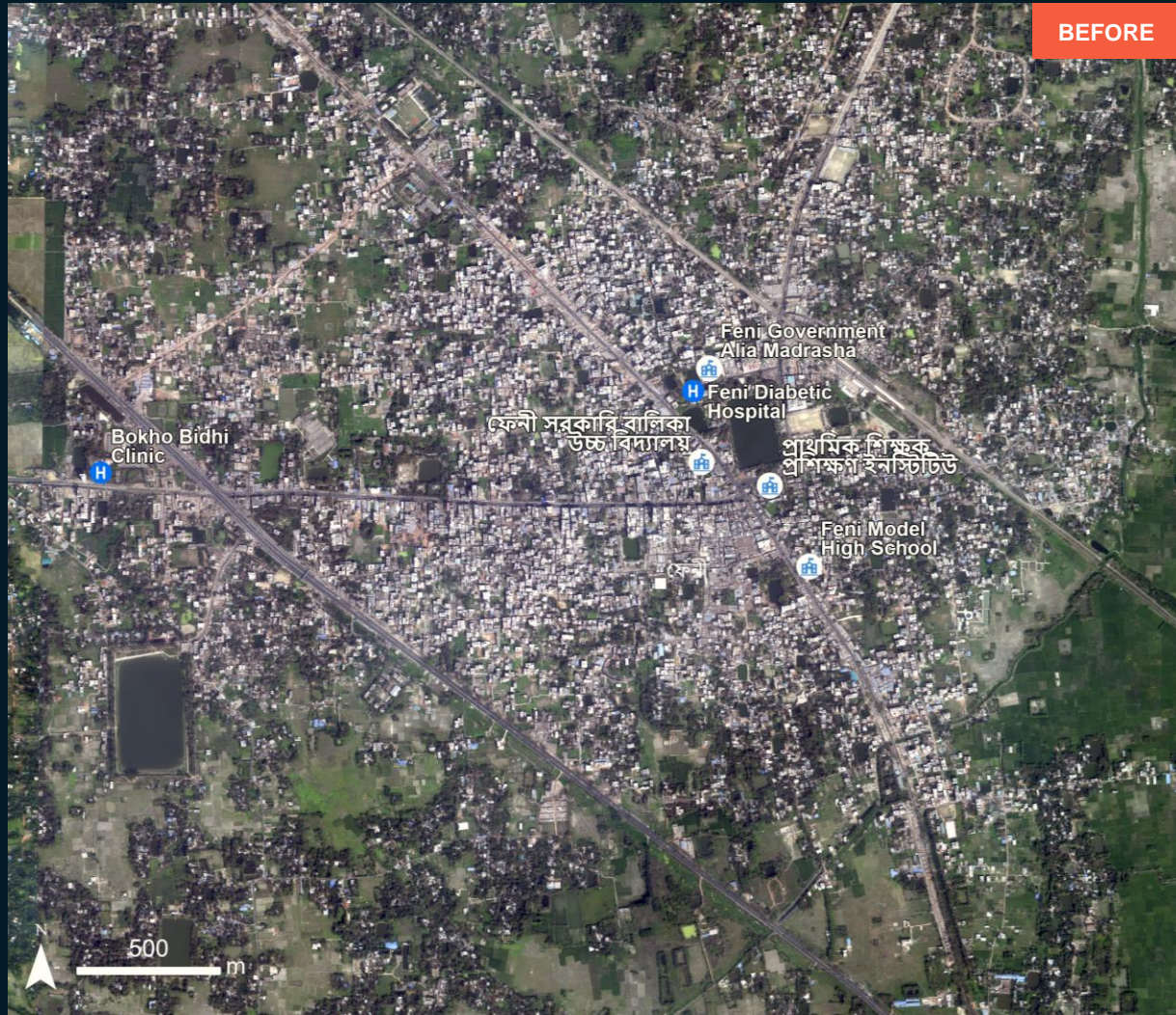
- Inundated urban area
- Inundated road
- Inundated agricultural area



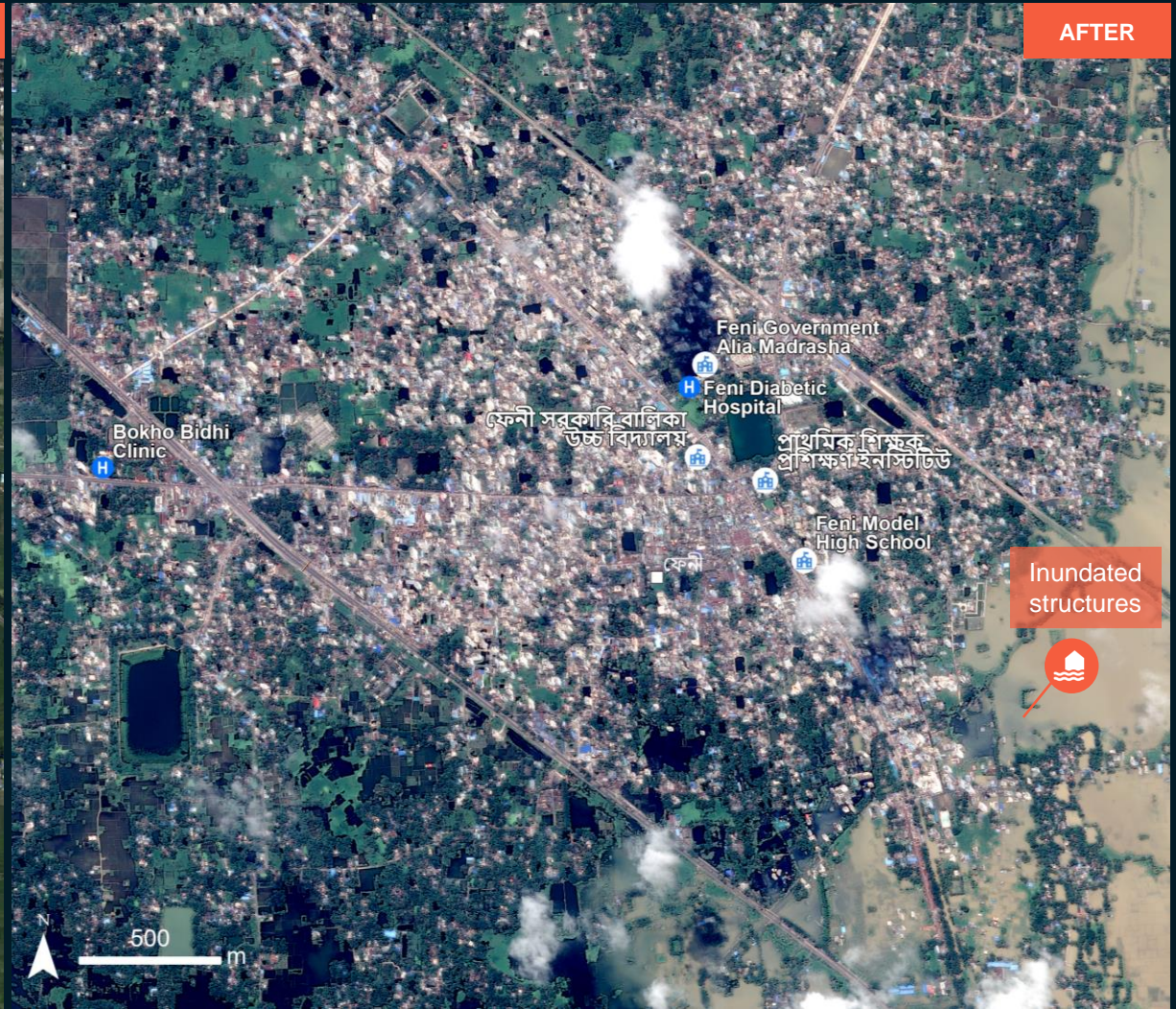
AOI1- FINI CITY, FENI DISTRICT, CHATTROGRAM DIVISION

Inundated structures/houses and croplands

Image center:
91°23'42"E
23°0'35"N



BEFORE



AFTER

Inundated structures

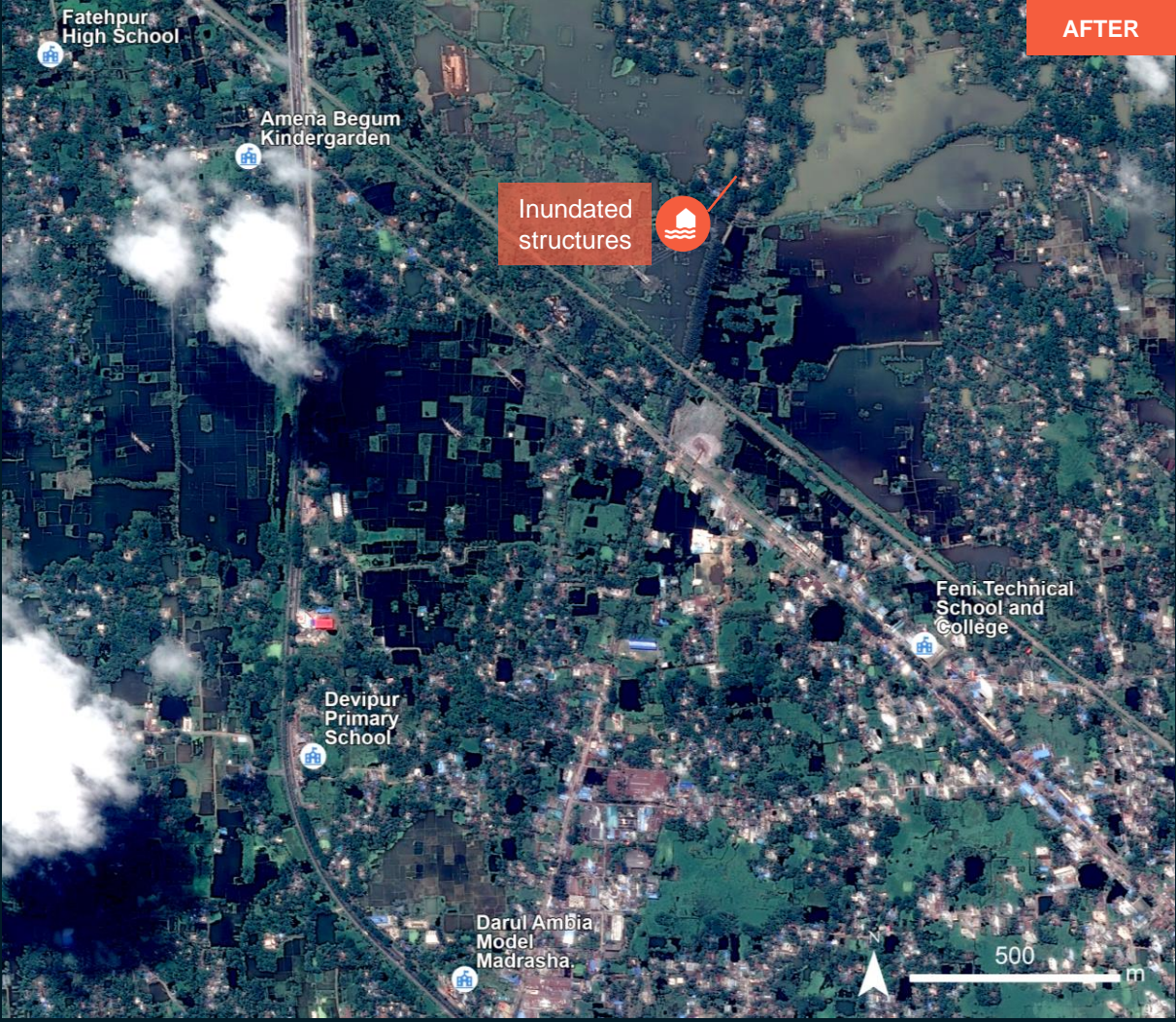
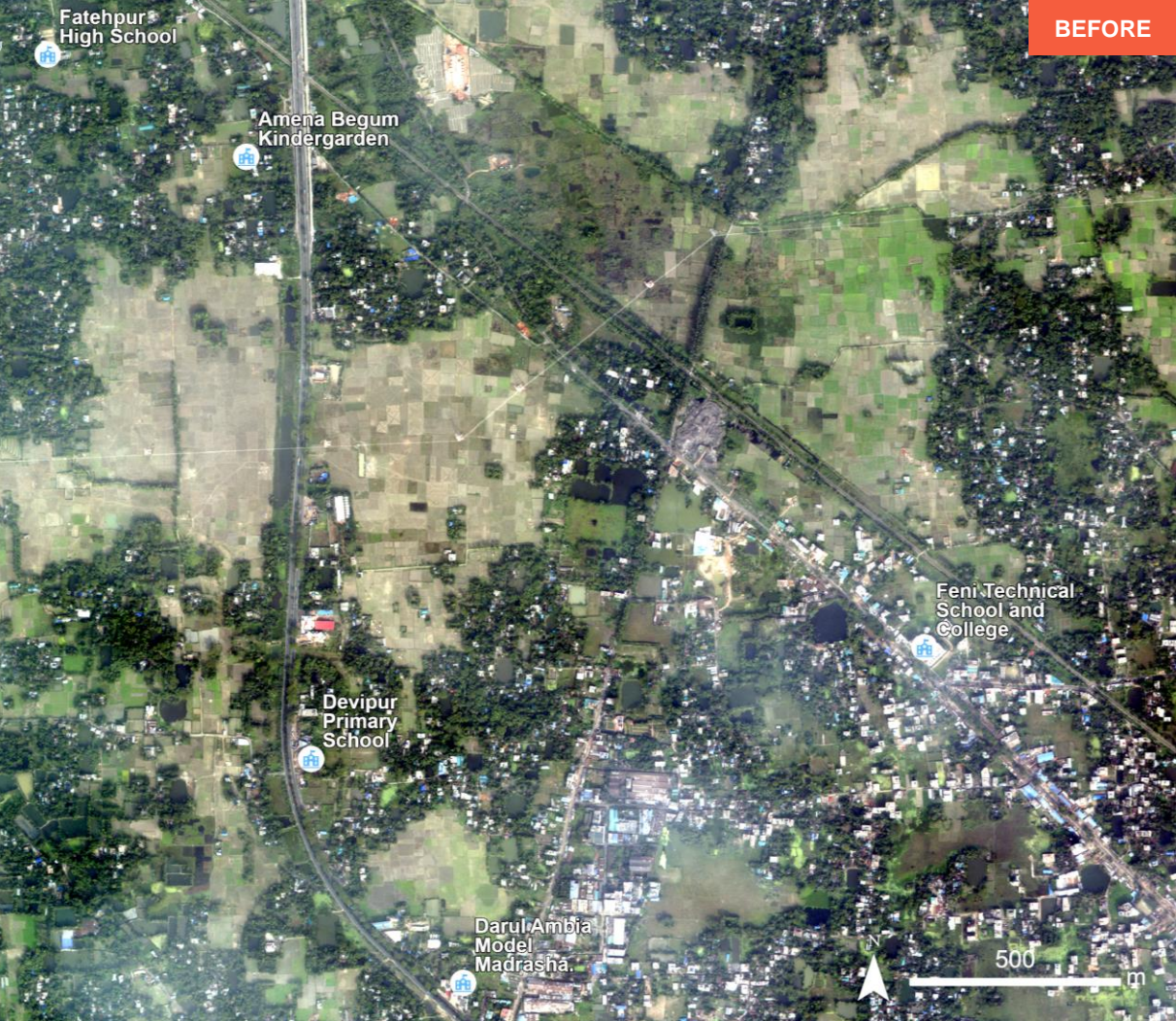
WorldView-3 / 2 March 2023

Pleiades / 29 August 2024

AOI2- FINI CITY, FENI DISTRICT, CHATTROGRAM DIVISION

Inundated structures/houses and croplands

Image center:
91°22'24"E
23°1'50"N



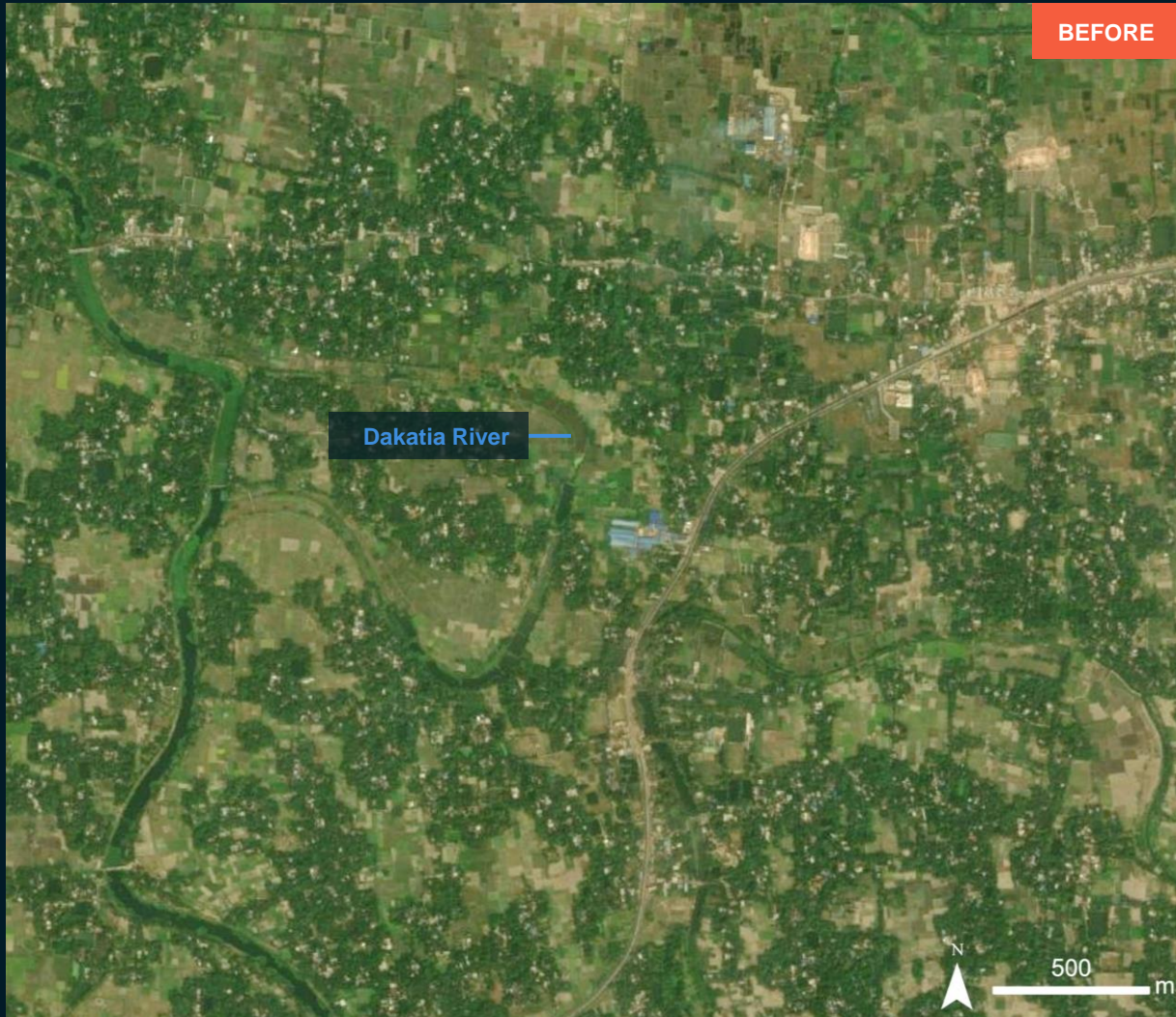
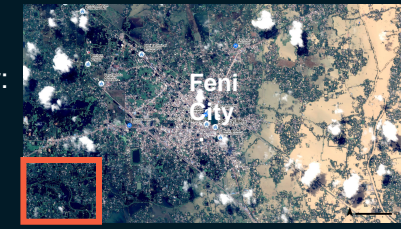
WorldView-3 / 25 January 2024

Pleiades / 29 August 2024

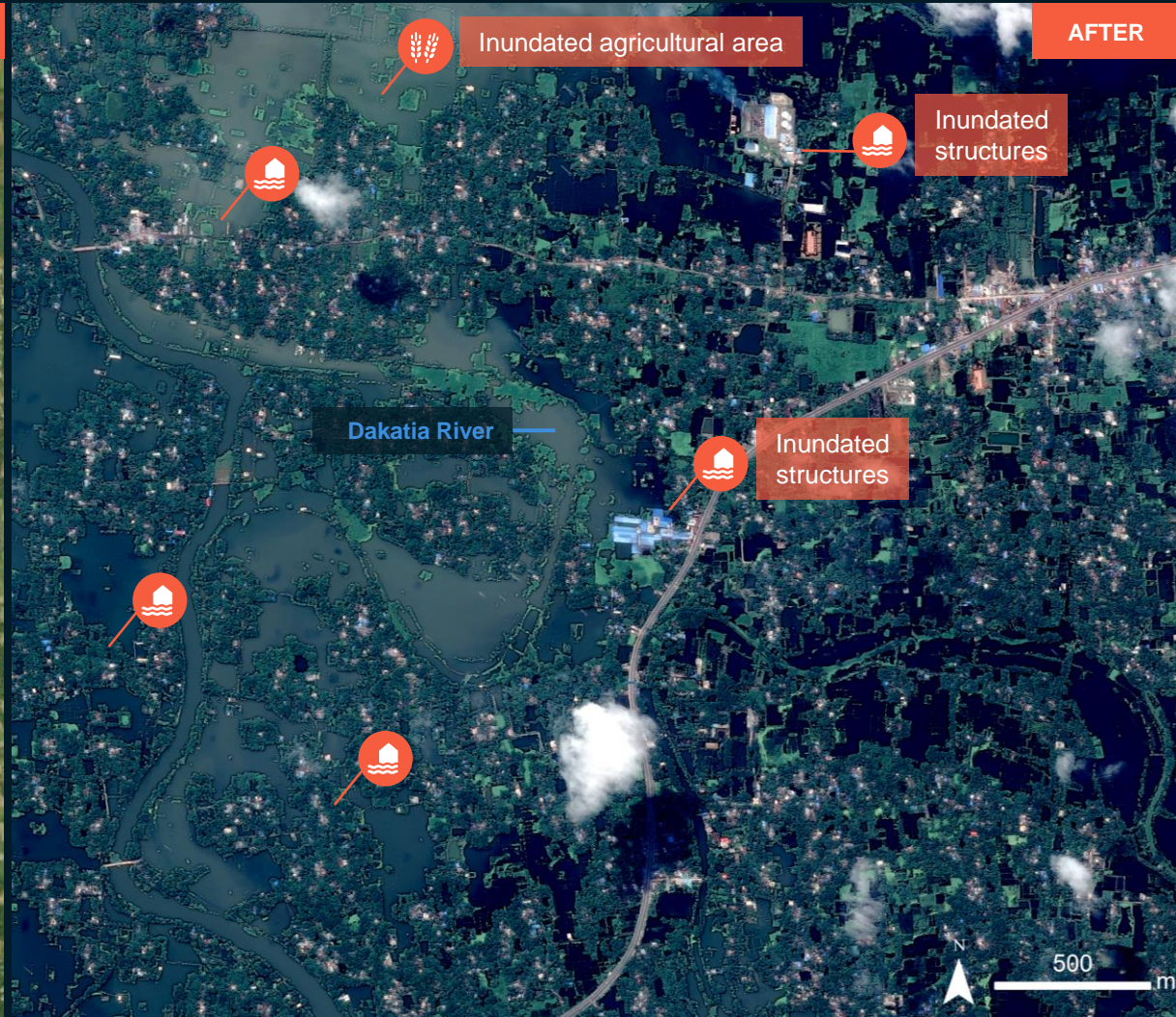
AOI3- FINI CITY, FENI DISTRICT, CHATTROGRAM DIVISION

Inundated structures/houses and croplands

Image center:
91°20'39"E
22°59'57"N



GEOEYE-1 / 31 January 2023

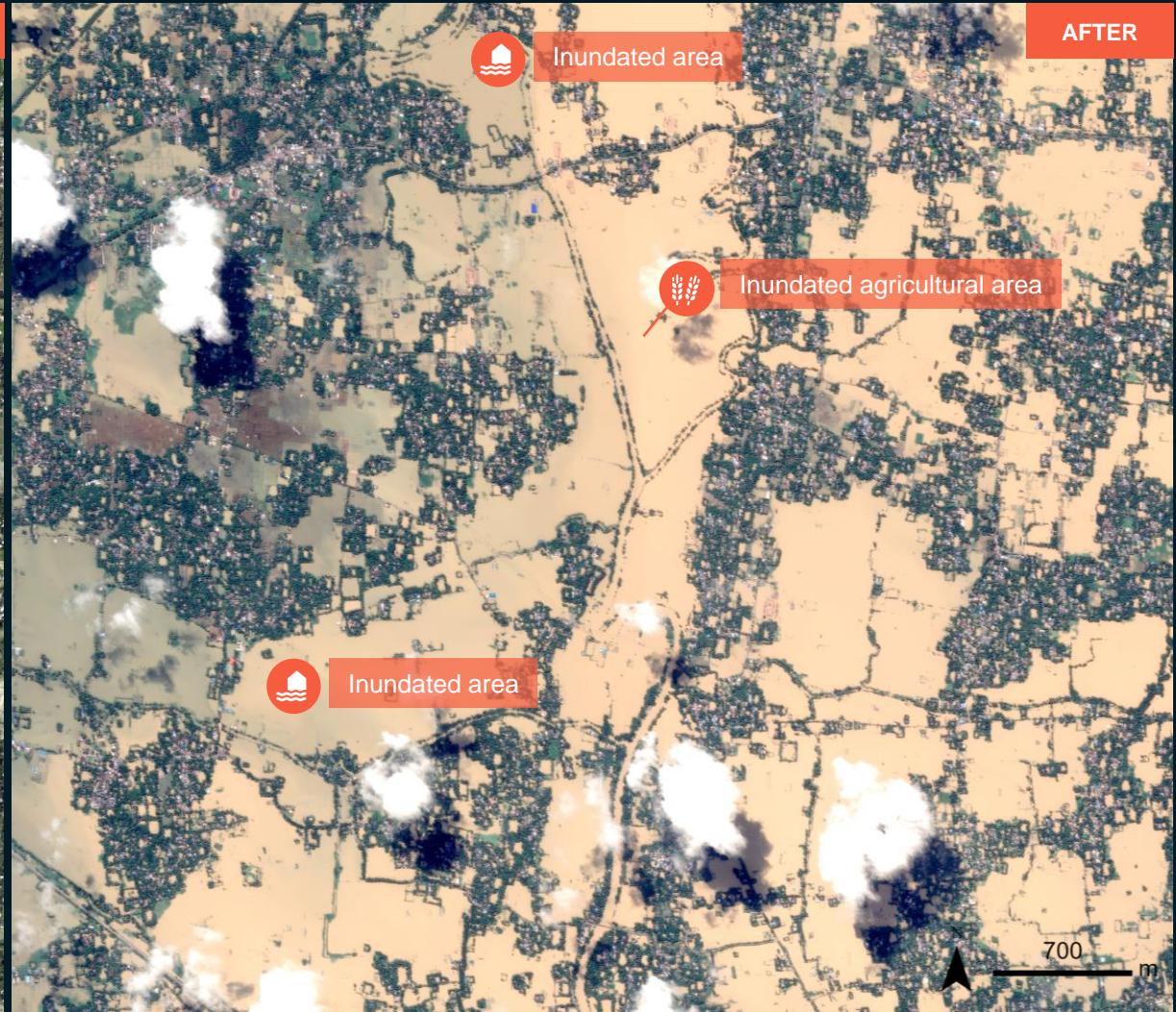


Pleiades / 29 August 2024

AO14- FINI CITY, FENI DISTRICT, CHATTROGRAM DIVISION

Inundated structures/houses and croplands

Image center:
91°26'38"E
23°1'28"N



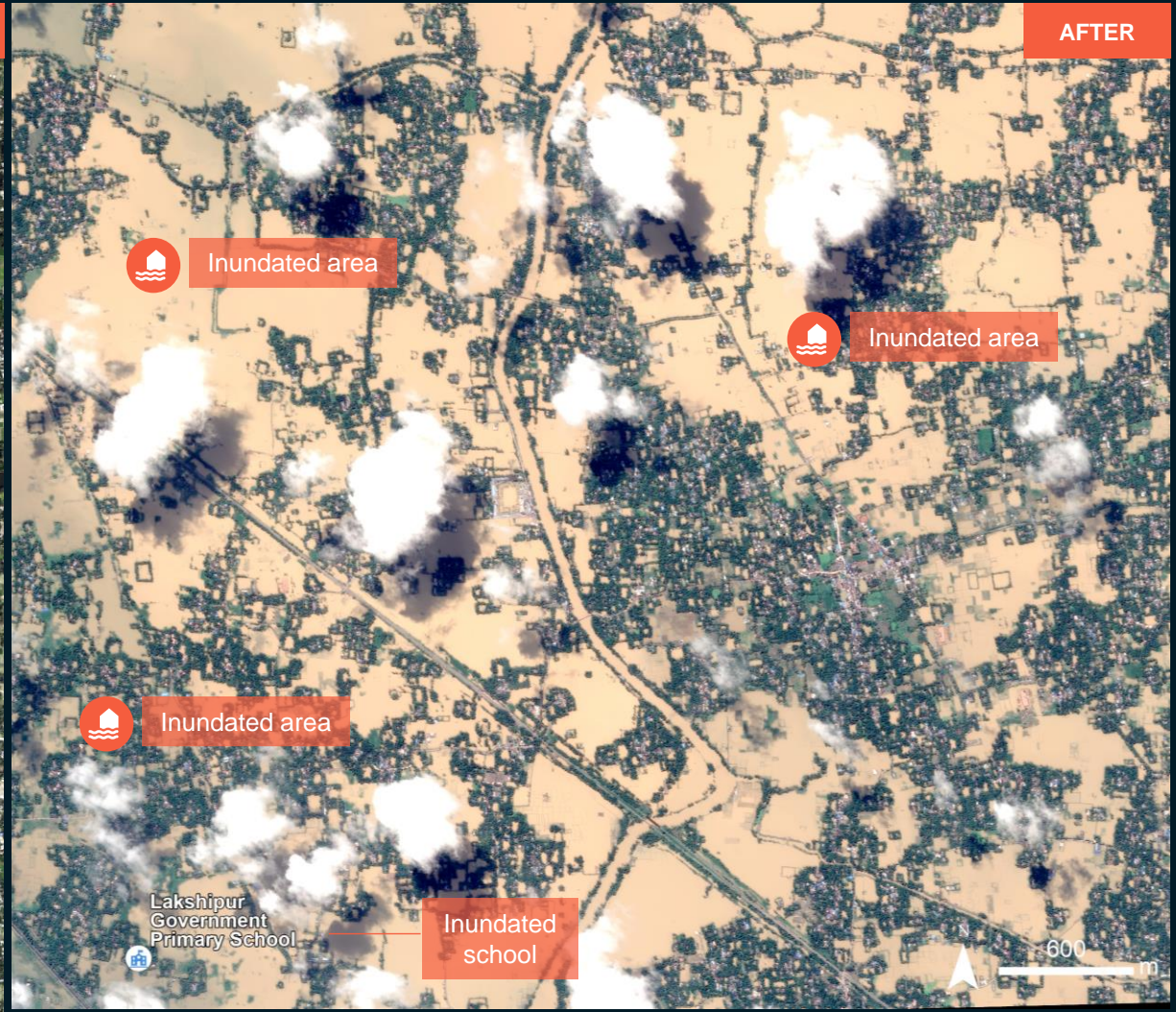
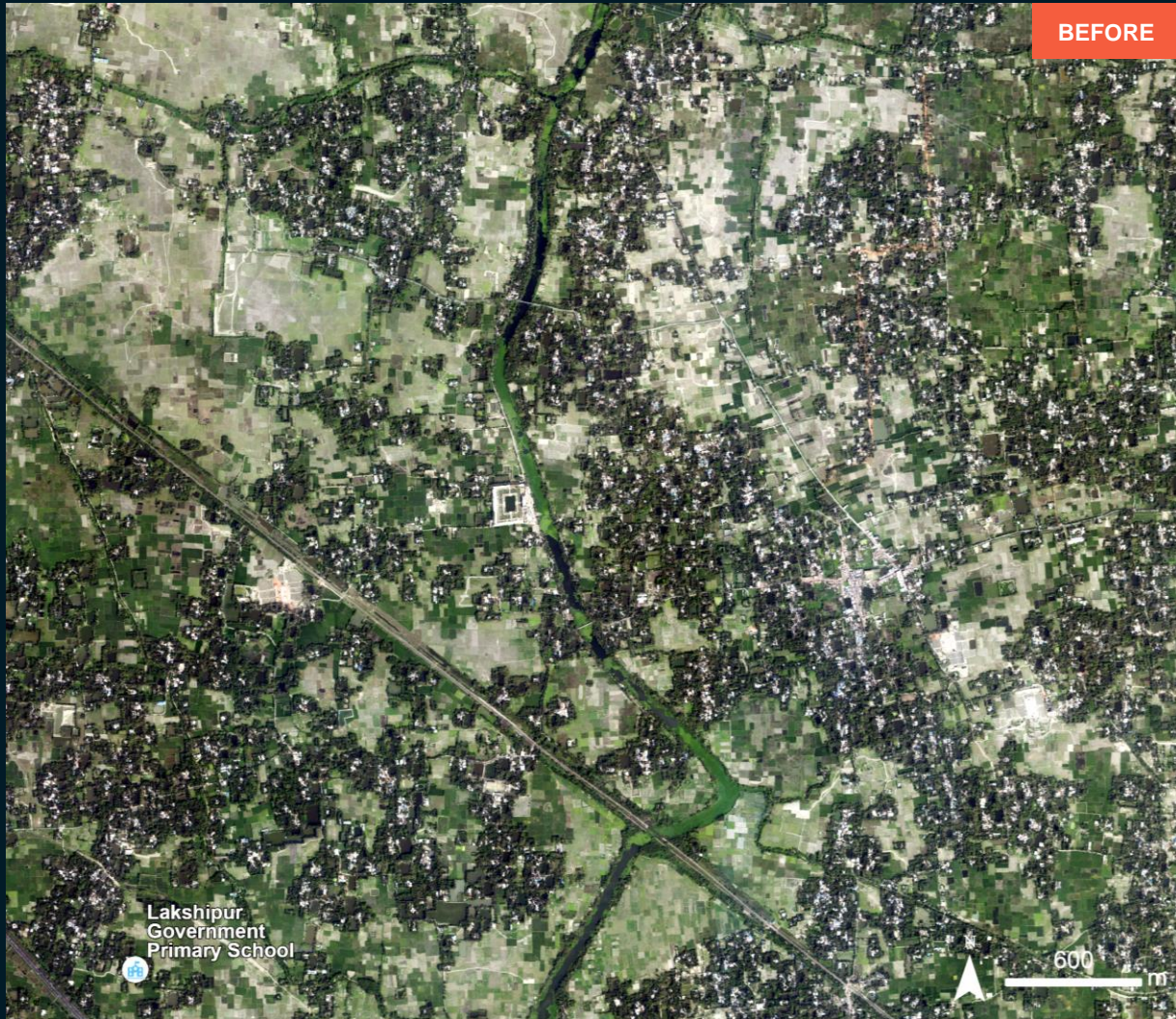
WorldView-3 / 25 January 2024

Pleiades / 29 August 2024

AOI5- FINI CITY, FENI DISTRICT, CHATTROGRAM DIVISION

Inundated structures/houses and croplands

Image center:
91°26'42"E
22°59'53"N



WorldView-3 / 25 January 2024

Pleiades / 29 August 2024

SUMMARY OF FINDINGS

- Inundated structures/houses and croplands have been observed in Feni city and the surrounding areas as of August 29, 2024,

COPYRIGHTS & SOURCES

Data sources:

(1) Post image

Satellite Data: Pleiades

Imagery Dates: 29 August 2024 at 04:26 UTC

Resolution : 50cm

Copyright : CNES (2024), distribution Airbus D&S

Source : Airbus D&S

(2) Pre-image

Satellite Data : WorldView-3

Imagery Dates: 2 March 2023 and 25 January 2024 and

Resolution : 30 cm

Copyright: © (2024) DigitalGlobe, Inc., Longmont CO USA 80503.

DigitalGlobe and the DigitalGlobe logos are trademarks of DigitalGlobe, Inc.

The use and/or dissemination of this data and/or of any product in any way derived there from are restricted. Unauthorized use and/or dissemination is prohibited

Source: USGS

Satellite Data : GeoEye-1

Imagery Dates: 31 January 2023

Resolution : 50 cm

Copyright: © 2023 Maxar

Source: ESRI Basemap

(3) Ancillary data

Boundary data: Bangladesh Bureau of Statistics (BBS)

Populated place: OpenStreetMap

Waterways: OpenStreetMap

Analysis: United Nations Satellite Centre (UNOSAT)

Production: United Nations Satellite Centre (UNOSAT)

 **@UNOSAT**

 **@UNITAR.unosat**

 **/UNOSAT**



UNOSAT, United Nations Institute for Training
and Research (UNITAR)
7 bis, Avenue de la Paix, CH-1202 Geneva 2,
Switzerland

T +41 22 917 4720
E unosat@unitar.org
www.unosat.org