


8 March 2024

PRELIMINARY SATELLITE-DERIVED FLOOD IMPACT ASSESSMENT

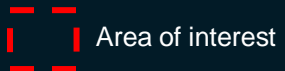
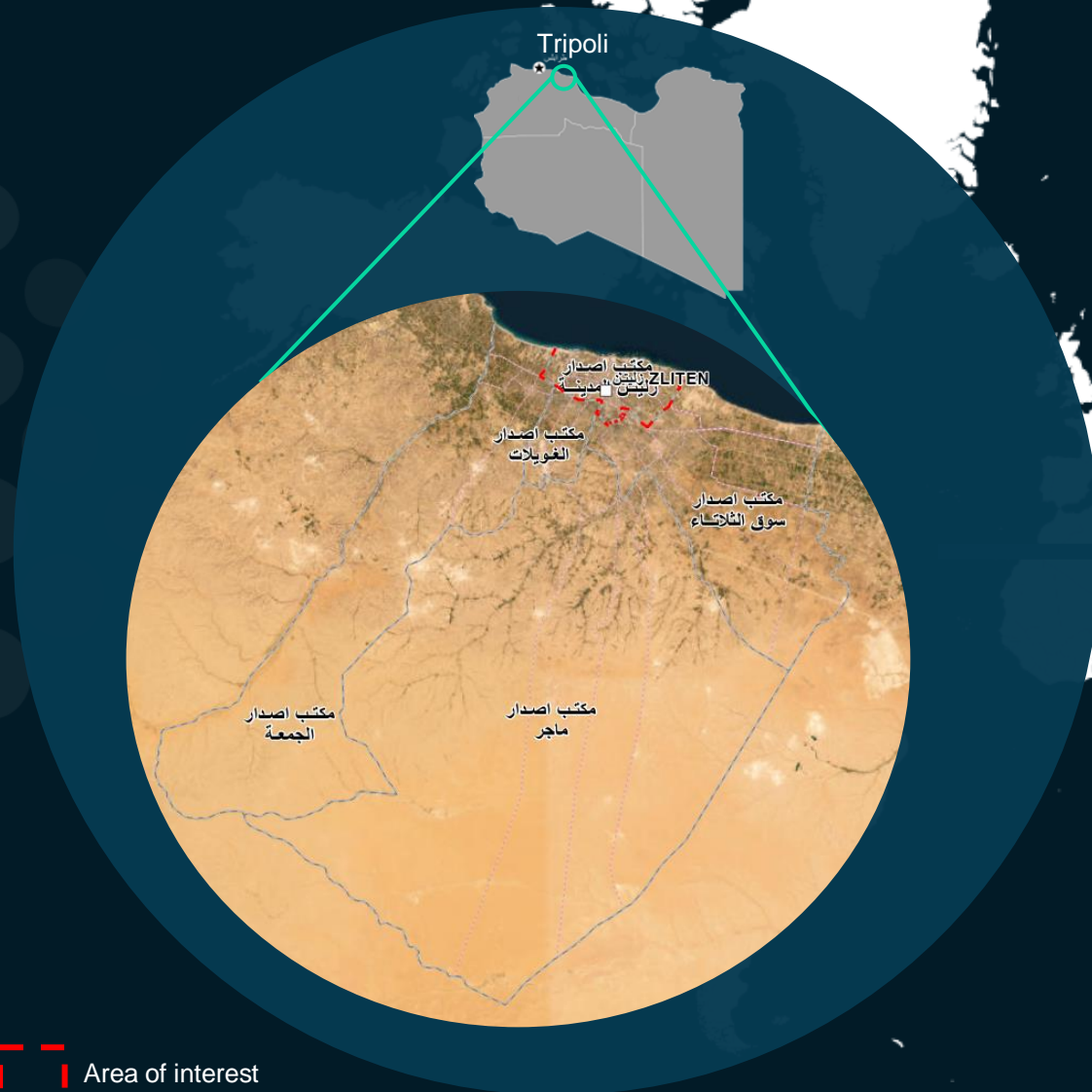


City of Zliten, Libya

 Status: Decreased surface water

 Further action(s): Full assessment to be conducted

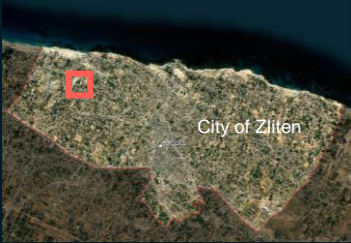
Libya



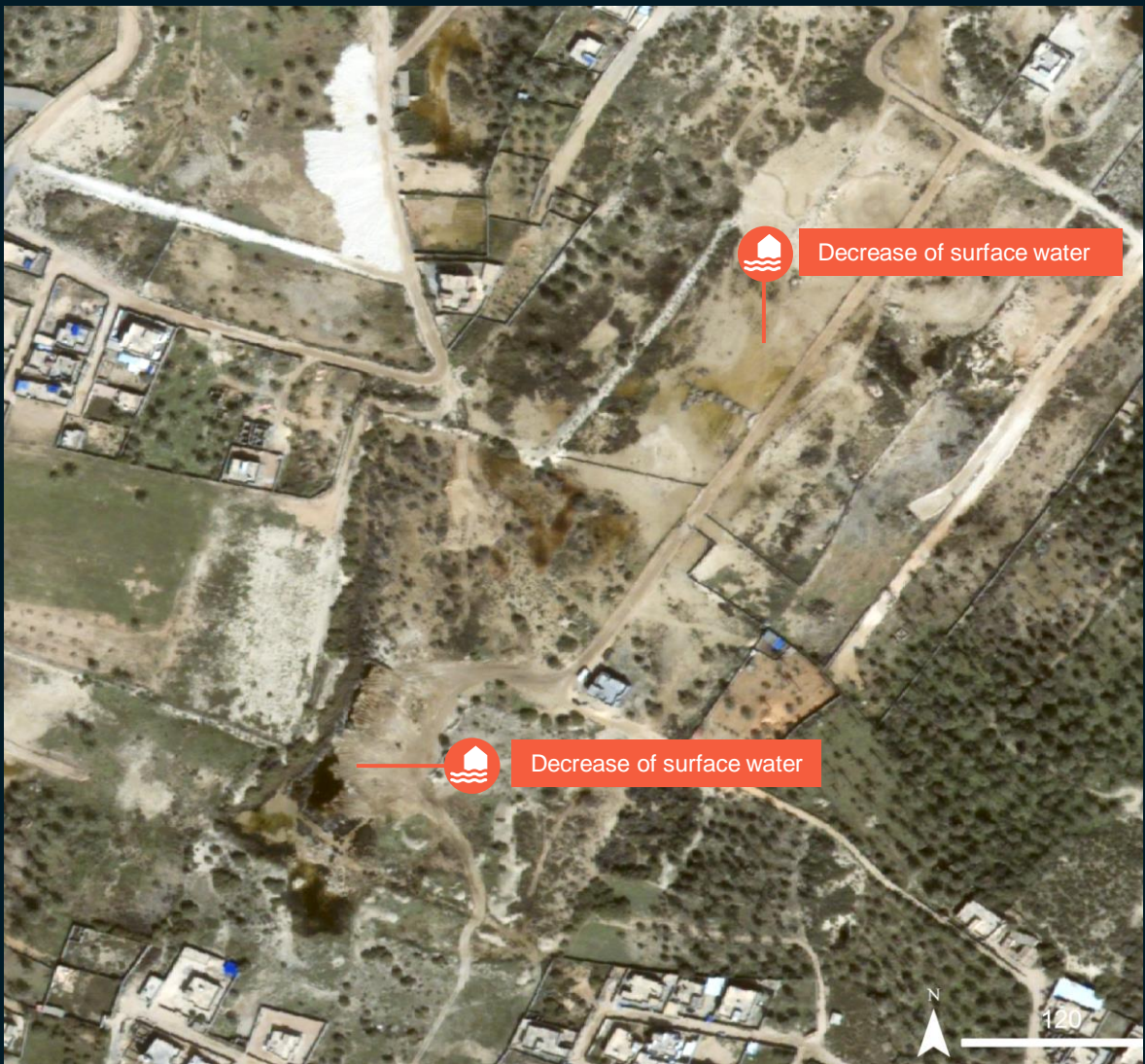
AOI 2: RUMAYA NEIGHBORHOOD, CITY OF ZLITEN

Decrease of surface water

Image center:
14°31'52"E
32°29'33"N



Pléiades Neo / 9 February 2024

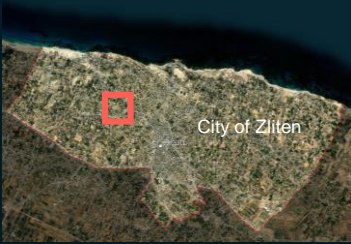


WorldView-2 / 3 March 2024

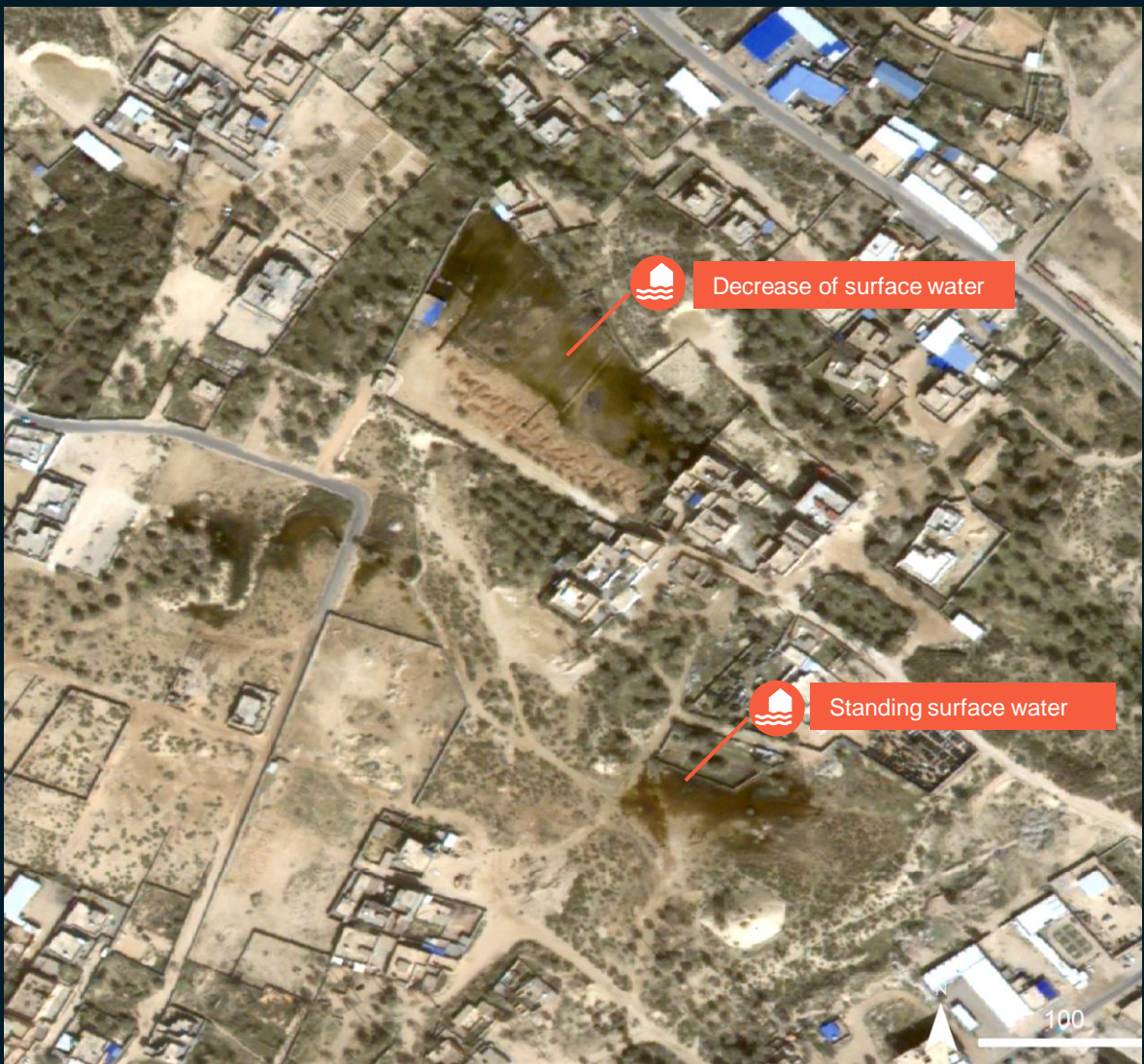
AOI 2: RUMAYA NEIGHBORHOOD, CITY OF ZLITEN

Decrease of surface water

Image center:
14°32'52"E
32°29'01"N



Pléiades Neo / 9 February 2024



WorldView-2 / 3 March 2024

SUMMARY OF FINDINGS

- Decreased surface water has been observed in the Rumaya Neighborhood in the City of Zliten as of 3 March 2024;

COPYRIGHTS & SOURCES

Data sources:

(1) Satellite Image: WorldView-2

Acquisition date: 3 March 2024

Resolution: 50 cm

Copyright: © 2024 Maxar

Source: USGS

(2) Satellite Data (Post): Pleiades Neo

Imagery Dates: 9 February 2023

Resolution: 30 cm

Copyright: © CNES 2024

Source: Airbus D&S

(3) ESRI Basemap

(4) Ancillary data

Boundary data: REACH Initiative and UNOCHA

Waterways: OpenStreetMap

Populated place: OpenStreetMap

Road data: OpenStreetMap

Population data: Worldpop UN Adjusted Constrained [2020]

Analysis: United Nations Satellite Centre (UNOSAT)

Production: United Nations Satellite Centre (UNOSAT)

 **@UNOSAT**

 **@UNITAR.unosat**

 **/UNOSAT**