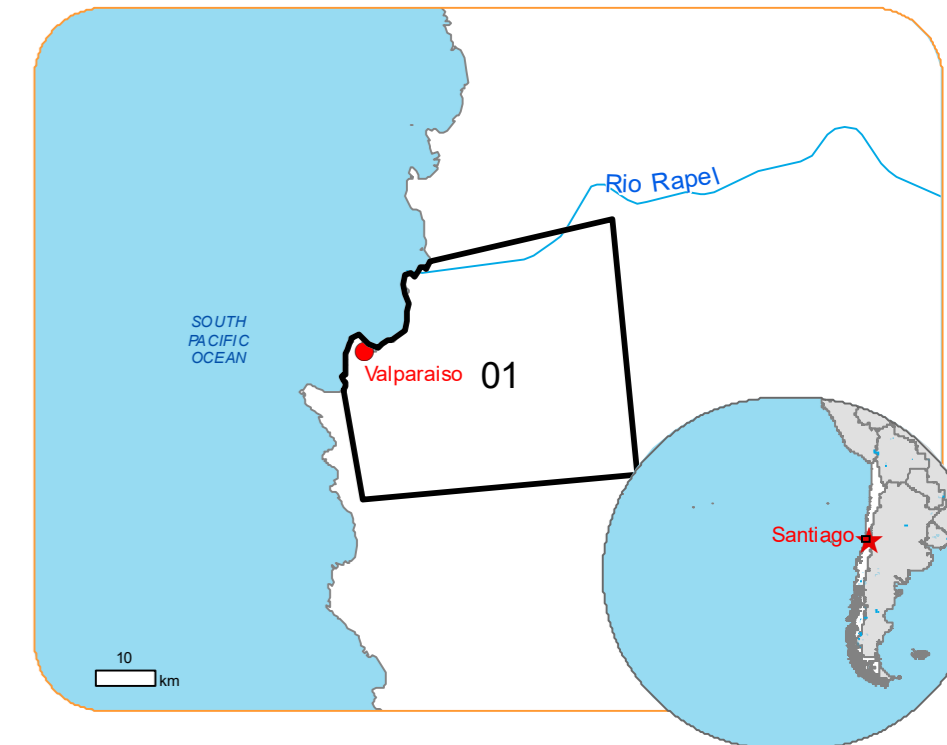


EMSR715 - AOI01
 Wildfire in Valparaiso region, Chile
VALPARAISO

Situation as of 05/02/2024 14:50 UTC
 Delineation - Overview map 01



Burnt area
 8,718.2 ha

Potentially affected population
 ~ 5100

Potentially Affected Built-up and Transportations

Built-Up
 59.5 ha

Road
 126.2 km

Railway
 6.2 km

- Crisis Information**
- Burnt area
- General Information**
- Area of Interest
- Not Analysed
- Administrative boundaries**
- Region
- Province
- Municipality
- Placenames**
- Placename
- Built-Up Area**
- Residential
- Non residential
- School, university and research buildings
- Hospital or institutional care buildings
- Military
- Hydrography**
- River
- Lake
- Reservoir
- River
- Facilities**
- Long-distance pipelines or lines
- Water or Aquatic infrastructure
- Dam
- Mining or extraction site
- Water Well
- Power plant
- Sport and recreation constructions
- Dump Site
- Water or Aquatic infrastructure
- Dam
- Transportation**
- Highway
- Main road
- Railway
- Airfield runway
- Transportation**
- Airfield
- Helipad

	Current		Forecast	
	05 February 14:50 UTC	06 February 15:00 UTC	07 February 15:00 UTC	07 February 15:00 UTC
Wind direction and speed	14 km/h	14 km/h	13 km/h	13 km/h
Temperature and relative Humidity	29° 68%	24° 66%	30° 56%	30° 56%

Data retrieved from ECMWF on February 05, 14:50 UTC. Calculated at: 33°23'1"S, 71°16'58"E.

Event:
 On the 3 February 2024, a wildfire is reported to have affected Valparaiso Region. Intense forest fires burning around a densely populated area caused at least 52 deaths. The event is on-going and spreading with damage expected to affect forests and urban areas. Copernicus EMS Rapid Mapping is requested to provide initial rough estimation and wildfire extent emergency mapping.

Data sources and analysis: Pre-event image: Sentinel-2A/B (2024) (acquired on 08/01/2024 at 14:37 UTC, resolution 10.0 m).
 Post-event image: Worldview-2 © Maxar Technologies, Inc. (2024) (acquired on 05/02/2024 at 14:50 UTC, resolution 2.0 m). This image is used as background image.
 All images are provided under COPERNICUS by the European Union and ESA, all rights reserved.

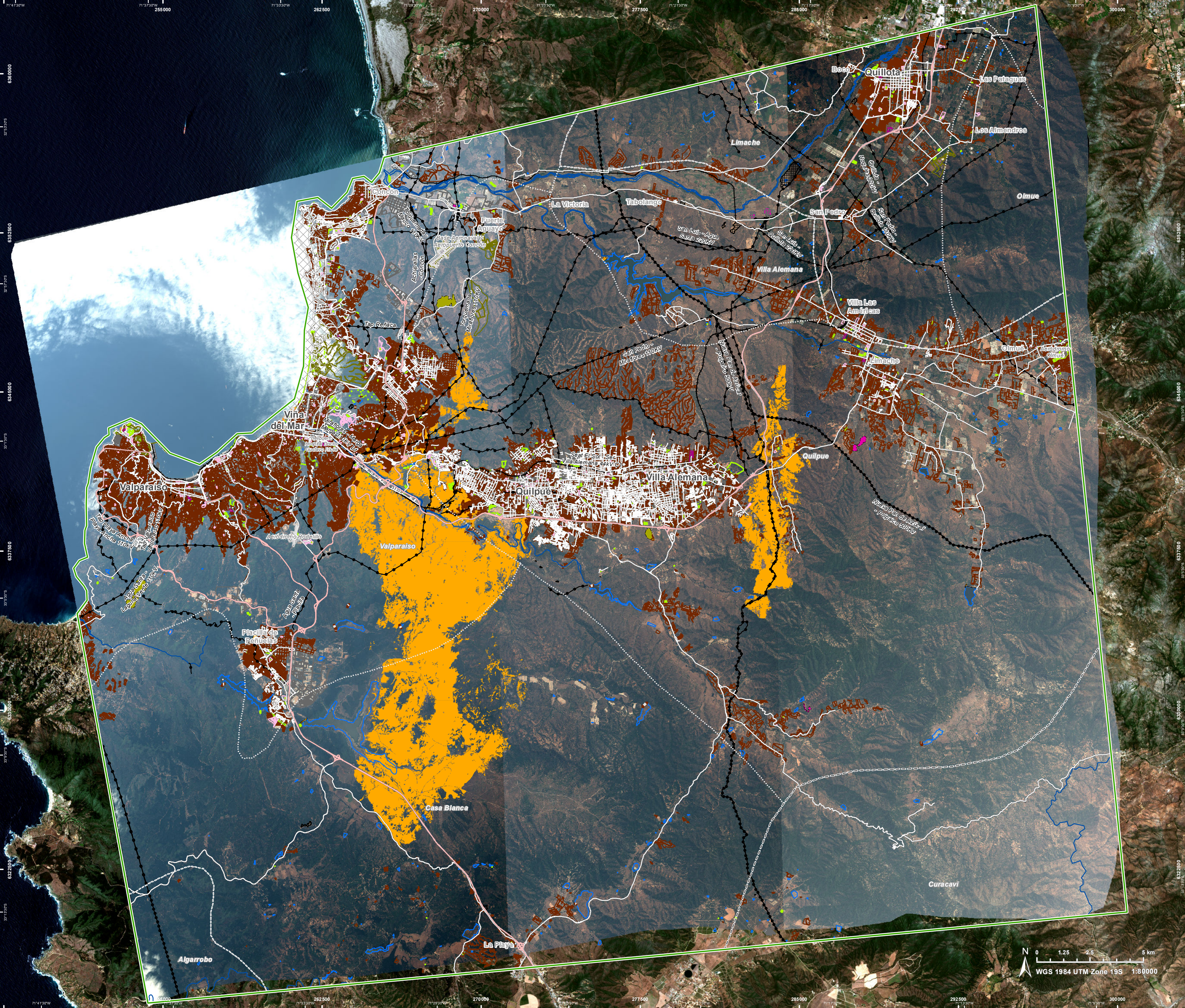
Base vector layers: OpenStreetMap © OpenStreetMap contributors (2024), Wikimapia.org, GeoNames 2015, Global Administrative Areas (2012), refined by the producer, Globe Land 30 (2010), Copernicus Global Land Service: Land Cover (2019). Inset maps: JRC 2013, Natural Earth 2012, GeoNames 2015.

Population data: GHS Population Grid © European Commission, 2023 https://ghsl.jrc.ec.europa.eu/ghs_pop2023.php
 Digital Elevation Model: SRTM (30 m) (NASA/USGS) provided under COPERNICUS by the European Union and ESA, all rights reserved.

The thematic layer has been derived from post-event satellite image using a semi-automatic approach

Map produced by Planetek Hellas released by e-GEOS on the 06/02/2024.

Details on this activation and service conditions available through the QR code or at the link: <https://rapidmapping.emergency.copernicus.eu/EMSR715>



WGS 1984 UTM Zone 19S 1:80000

Consequences within the AOI		Unit of measurement	Affected	Total in AOI
Burnt area		ha		8,718.2
Estimated population	Number of inhabitants		~ 5,100	1.200 Mio.
Built-up	Residential Buildings	ha	57.1	12,100.2
	Office buildings	ha	0	53.1
	Wholesale and retail trade buildings	ha	0	91.3
	Industrial buildings	ha	2.0	1,278.6
	School, university and research buildings	ha	0.4	303.1
	Sports halls	ha	0	31.7
	Hospital or institutional care buildings	ha	0	20.9
	Other non-residential buildings	ha	0.1	241.2
	Military	ha	0	792.2
Cemetery	ha	0	88.9	
Transportation	Airfield runways	ha	0	132.7
	Helipad	ha	0	0.3
	Airfield runways	km	0	5.7
	Highways	km	28.9	294.7
	Primary Road	km	10.4	1,329.9
	Secondary Road	km	1.2	194.5
	Local Road	km	14.9	3,427.3
	Cart Track	km	70.9	3,141.5
Long-distance railways	km	6.2	145.9	
Facilities	Settling Basin	ha	0	3.8
	Dams	ha	0	5.9
	Constructions for mining or extraction	ha	0	93.4
	Power plant constructions	ha	0	39.4
	Sport and recreation constructions	ha	0.6	564.0
	Other civil engineering works not elsewhere classified	ha	0	103.5
	Long-distance pipelines, communication and electricity lines	km	19.7	480.2
	Local pipelines and cables	km	0.1	36.6
	Breakwater	km	0	0.9
Dams	km	0.02	1.5	
Land use	Shrub and/or herbaceous vegetation association	ha	4,893.0	83,637.9
	Forests	ha	2,947.9	52,422.3
	Heterogeneous agricultural areas	ha	749.2	21,835.1
	Other	ha	124.6	16,057.3
	Inland wetlands	ha	3.4	141.3
	Open spaces with little or no vegetation	ha	0	186.6

Disclaimer:

Full disclaimer and other helpful information available in the online manual:

<https://emergency.copernicus.eu/mapping/ems/online-manual-rapid-mapping-products>

© European Union / Copernicus Emergency Management Service

Data access:

All data displayed on the map(s), as well as the Physiography and Land Use - Land Cover layers, are available in the Crisis Information Package and the Base Layer Package (for reference data).

The table above is available in editable format in the Crisis Information Package.

All products and data are also available for download on the portal.

Access to
the portal



PROGRAMME OF THE
EUROPEAN UNION

