



29 January 2024

PRELIMINARY SATELLITE-DERIVED DAMAGE ASSESSMENT



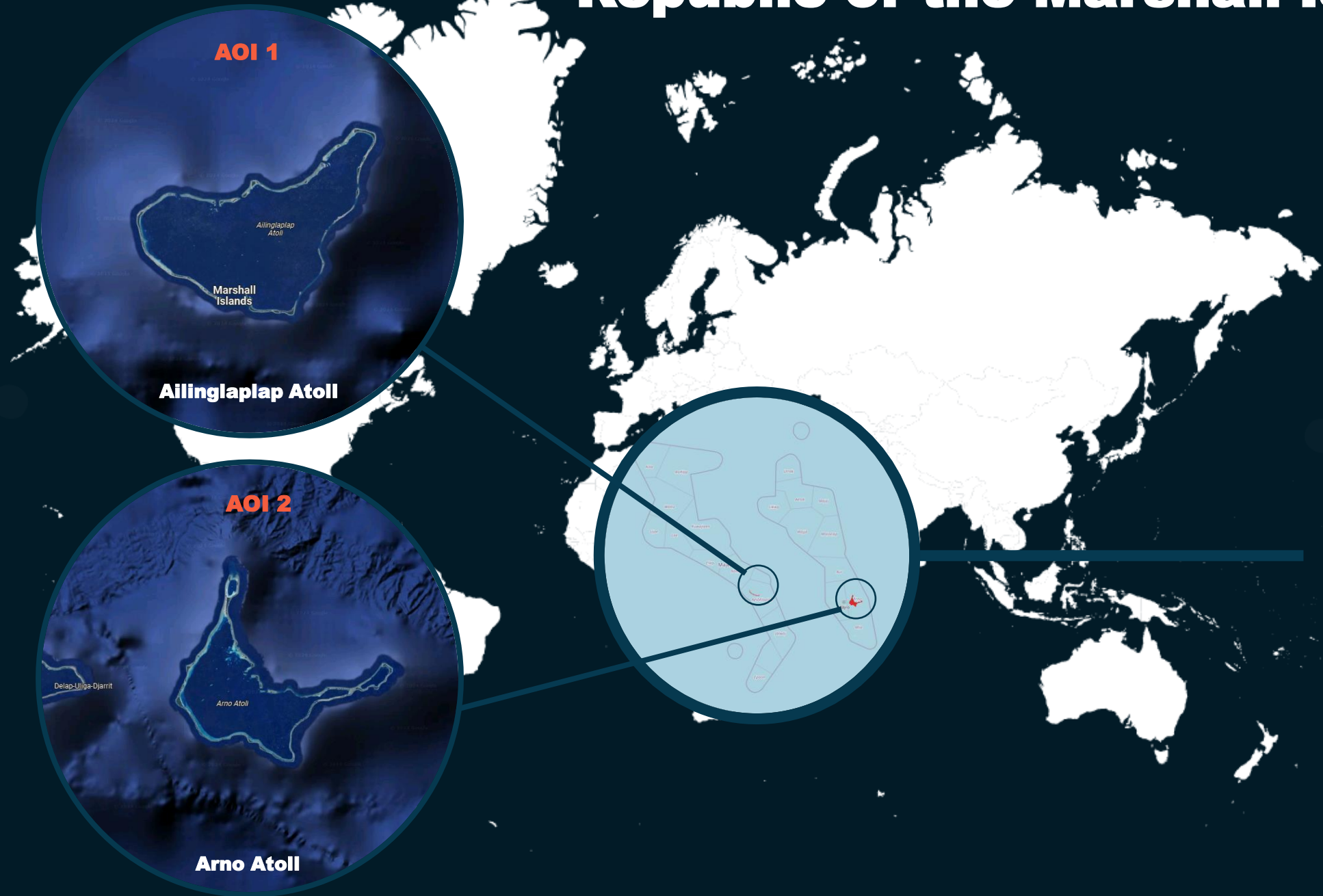
Ailinglaplap Atoll and Arno Atoll, Republic of the Marshall Islands

 Status: Potentially affected shoreline and airport detected

 Further action(s): completed



Republic of the Marshall Islands



AOI 1 – 1: Woja airport, Ailinglaplap Atoll, The Marshall Islands

Potentially affected shoreline and runway

Image center:
168°33'4"E
7°27'6"N



Esri Basemap / WorldView-2 / 25 January 2022



Newsat / 22 January 2024

AOI 1 – 1: Woja airfield, Ailinglaplap Atoll, The Marshall Islands

No extended damage

Image center:
168°33'4"E
7°27'6"N



Newsat / 22 January 2024

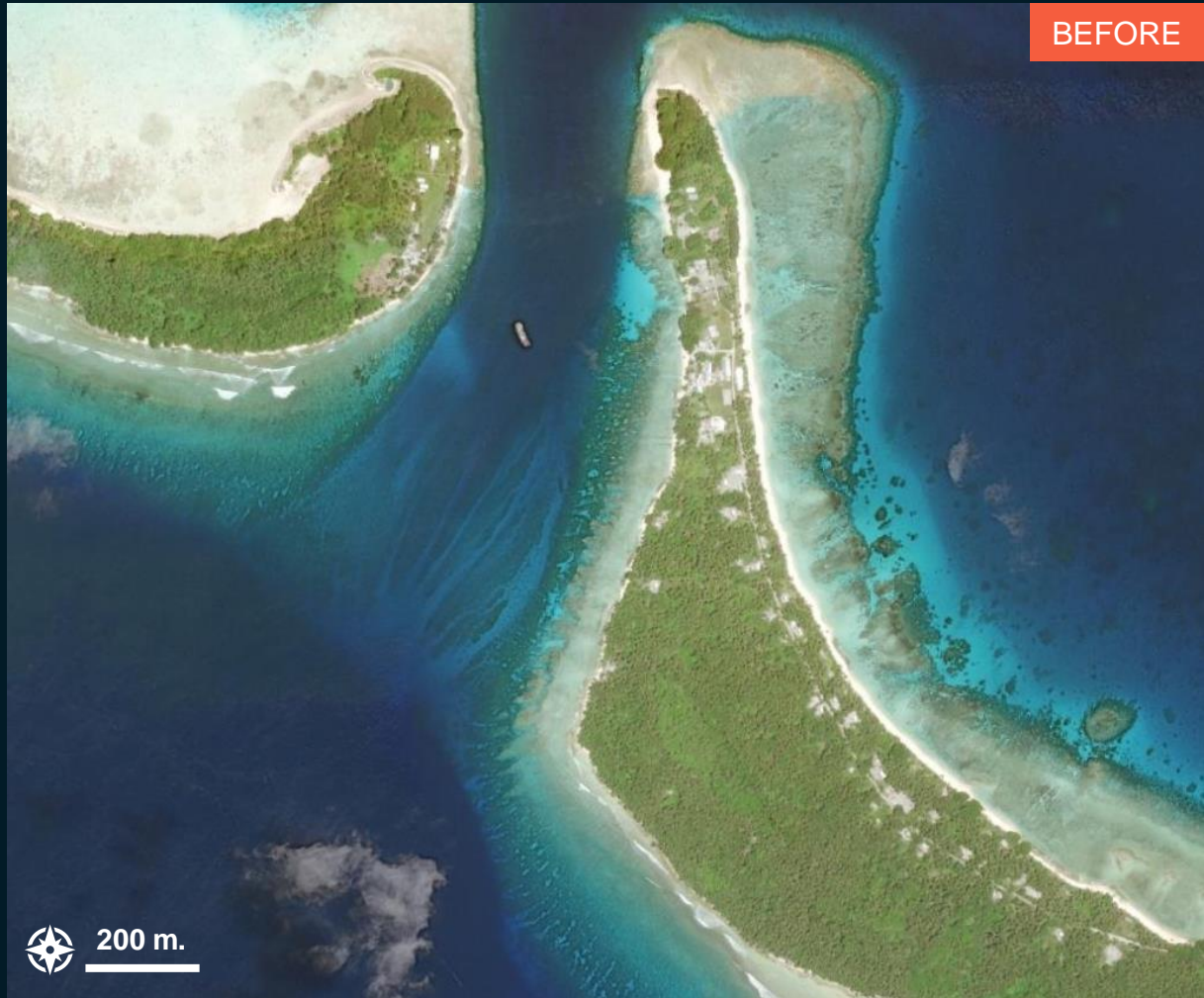


Pleiades / 28 January 2024

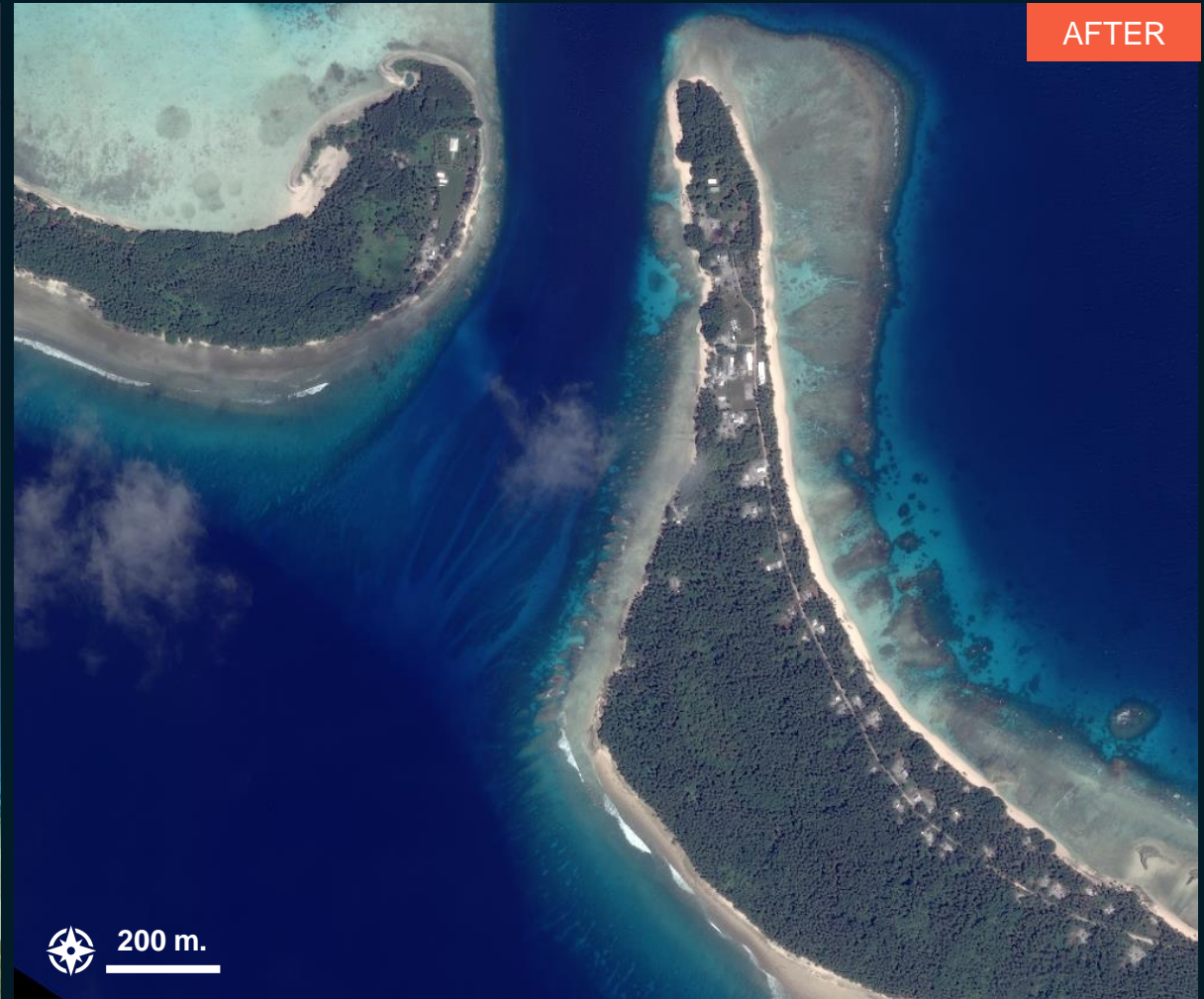
AOI 1 – 2 : Ailinglaplap Atoll, The Marshall Islands

No major visible damage

Image center:
168°44'44"E
7°17'17"N



Esri Basemap / WorldView-2 / 2 August 2021



Pleiades / 28 January 2024

AOI 1 – 3 : Ailinglaplap Atoll, The Marshall Islands

No major visible damage

Image center:
168°49'12"E
7°16'45"N



Esri Basemap / WorldView-2 / 4 July 2023

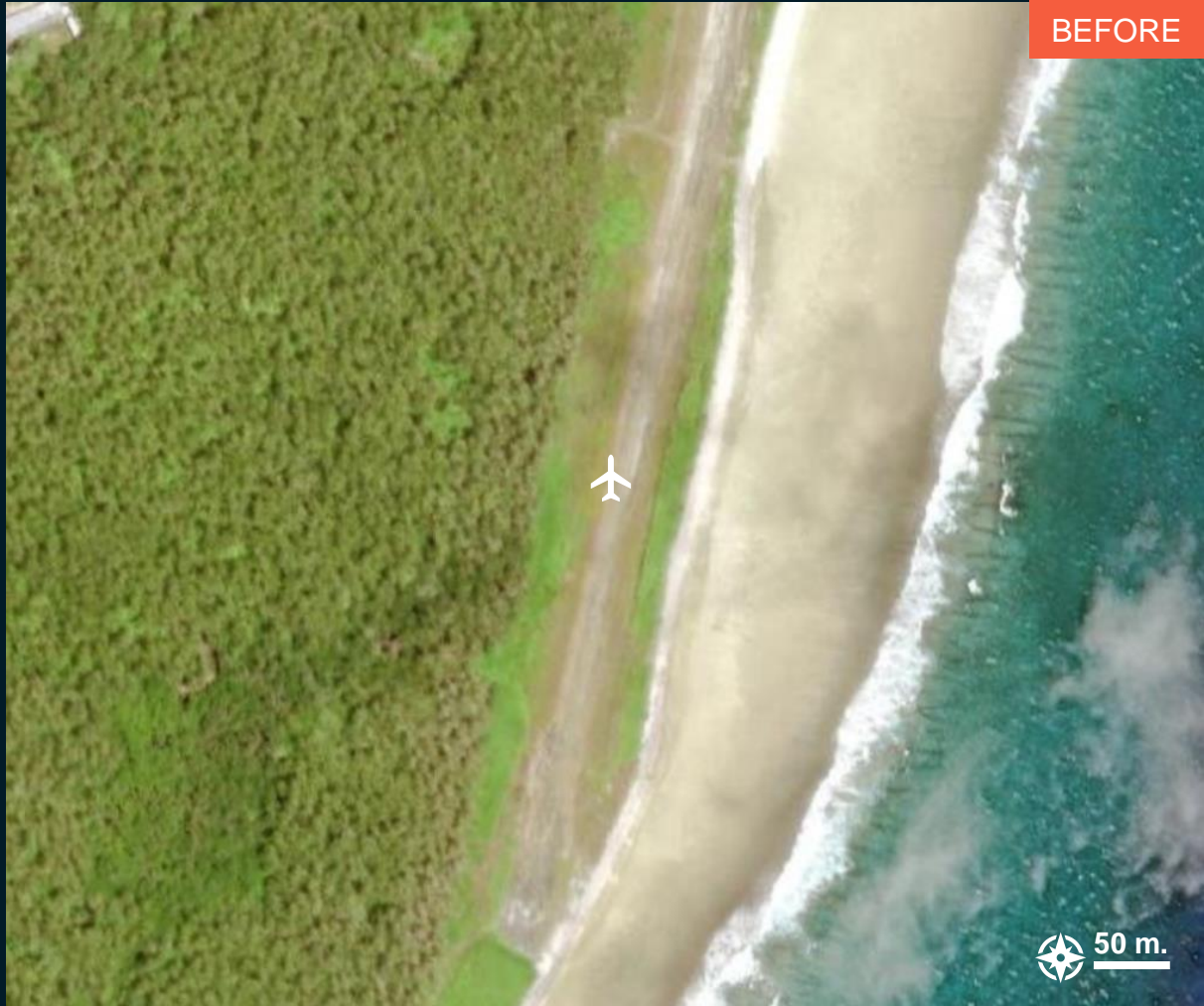


Pleiades / 28 January 2024

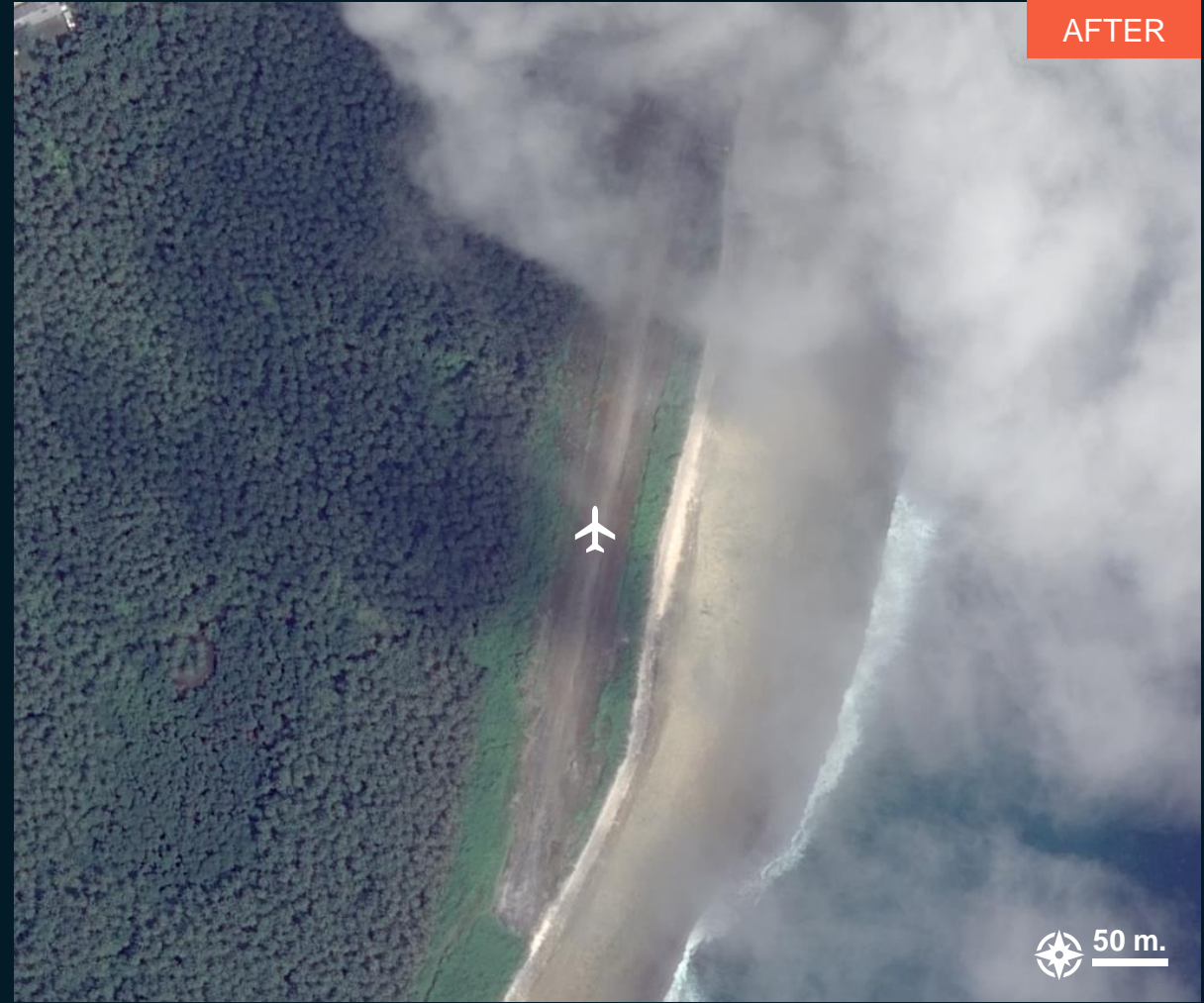
AOI 1 – 4 : Airok airfield, Ailinglaplap Atoll, The Marshall Islands

No major visible damage to Airok Airfield

Image center:
168°49'30"E
7°16'35"N



Esri Basemap / WorldView-2 / 4 July 2023



Pleiades / 28 January 2024

AOI 2 – 1 : Arno Atoll, The Marshall Islands

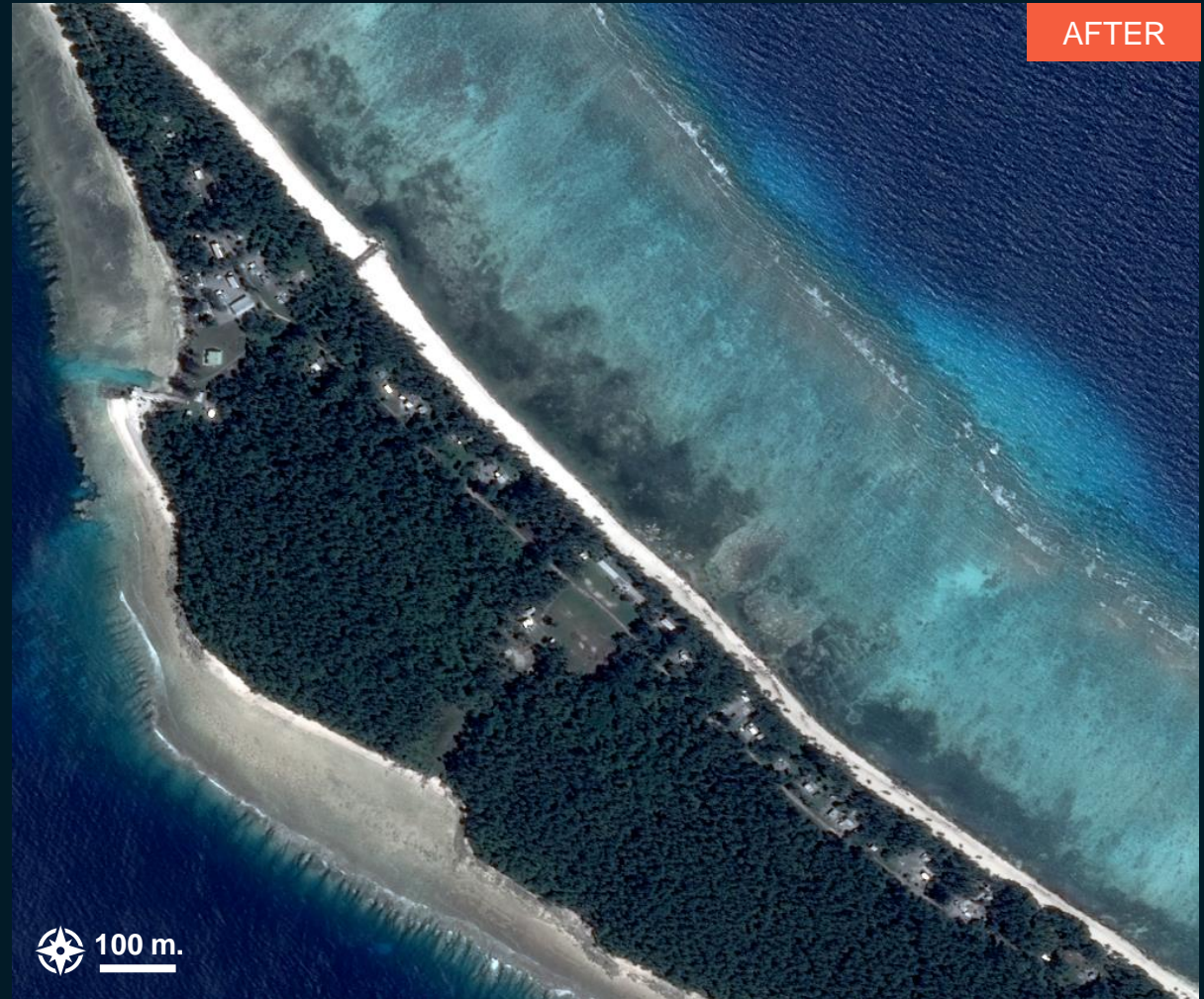
No major visible damage

Image center
171°42'6"E
6°58'58"N



BEFORE

Esri Basemap / WorldView-3 / 1 August 2022



AFTER

Pleiades / 26 January 2024

AOI 2 – 2 : Arno Atoll, The Marshall Islands

Potentially affected shoreline and structures

Image center
171°52'40"E
7°5'9"N



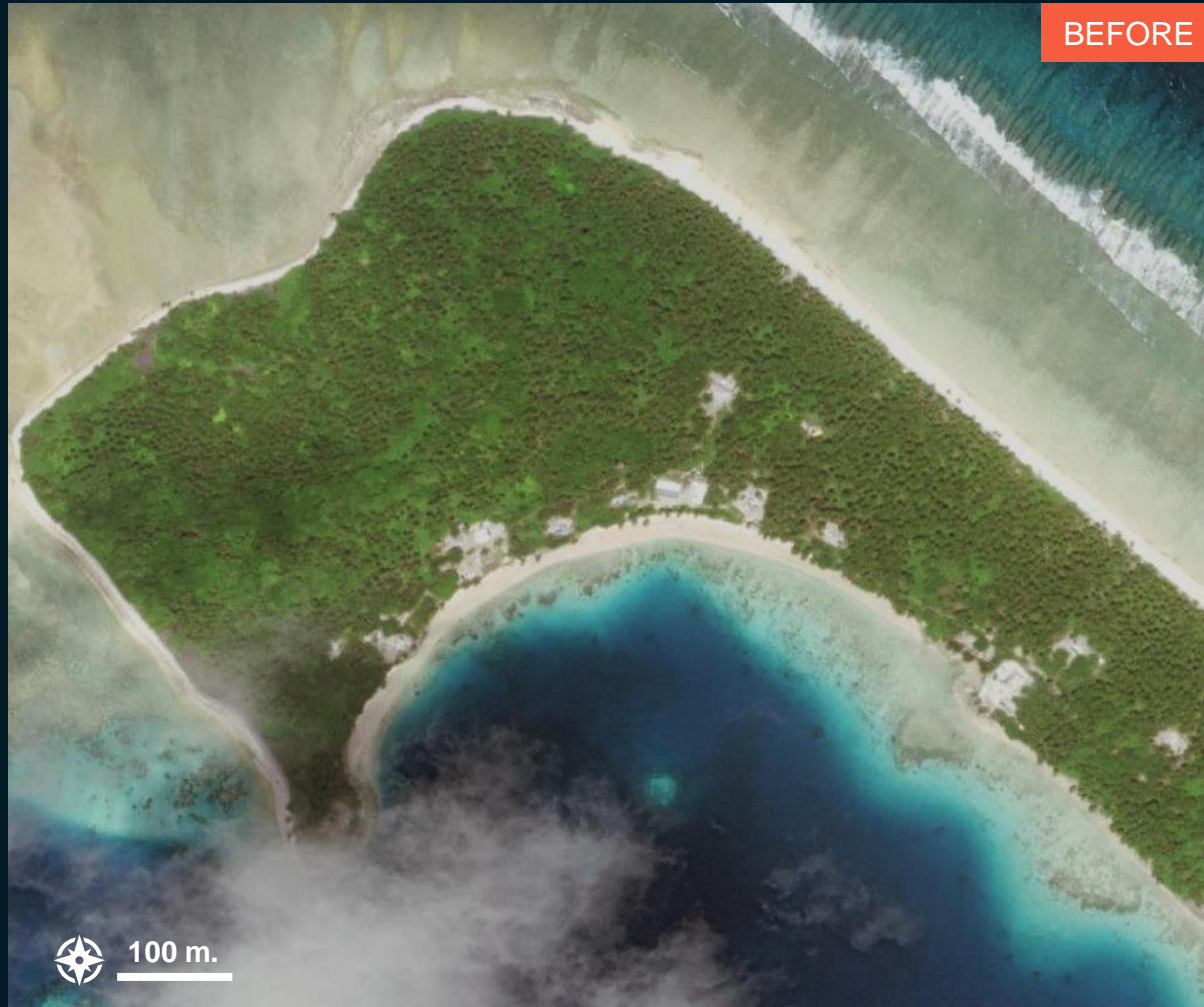
Esri Basemap / WorldView-2 / 23 August 2022

Pleiades / 26 January 2024

AOI 2 – 3 : Arno Atoll, The Marshall Islands

No major visible damage

Image center
171°55'22"E
7°7'41"N



Esri Basemap / WorldView-2 / 23 August 2022



Pleiades / 27 January 2024

SUMMARY OF FINDINGS

Ailinglaplap Atoll

- Potentially affected shoreline close to Woja airfield detected as of 22 January 2024
- No major damage observed on Airok airfield as of 28 January 2024

Arno Atoll

- Potentially affected shoreline and structures detected as of 26 January 2024

COPYRIGHTS & SOURCES

Data sources:

(1) Satellite Image (Post-event): Newsat

Acquisition date : 22 January 2024

Resolution: 70 cm

Copyright: Satellogic (2024)

Source: Satellogic

(2) Satellite Image (Post-event): Pleiades

Acquisition date : 26, 27 and 28 January 2024

Resolution: 50 cm

Copyright: CNES(2024), distribution Airbus D&S

Source : Airbus D&S

(3) Satellite Image (Pre-event): WorldView 2 and 3

Acquisition date : 25 January 2022, 2 August 2021, 4 July 2023, 1 August 2022
and 23 August 2022

Resolution: 50 cm

Copyright: ©2022 and 2023 DigitalGlobe, Inc., Longmont CO USA 80503.

Source: ESRI Basemap

(4) Ancillary data

Administrative boundaries: Secretariat of the Pacific Community, Statistics for Development Division and OCHA Regional Office for Asia and the Pacific

Analysis: United Nations Satellite Centre (UNOSAT)

Production: United Nations Satellite Centre (UNOSAT)

 **@UNOSAT**

 **@UNITAR.unosat**

 **/UNOSAT**



UNOSAT, United Nations Institute for Training
and Research (UNITAR)
7 bis, Avenue de la Paix, CH-1202 Geneva 2,
Switzerland

T +41 22 917 4720
E unosat@unitar.org
www.unosat.org