



26 Oct 2023

# TROPICAL CYCLONE LOLA-23, PRELIMINARY SATELLITE- DERIVED DAMAGE ASSESSMENT

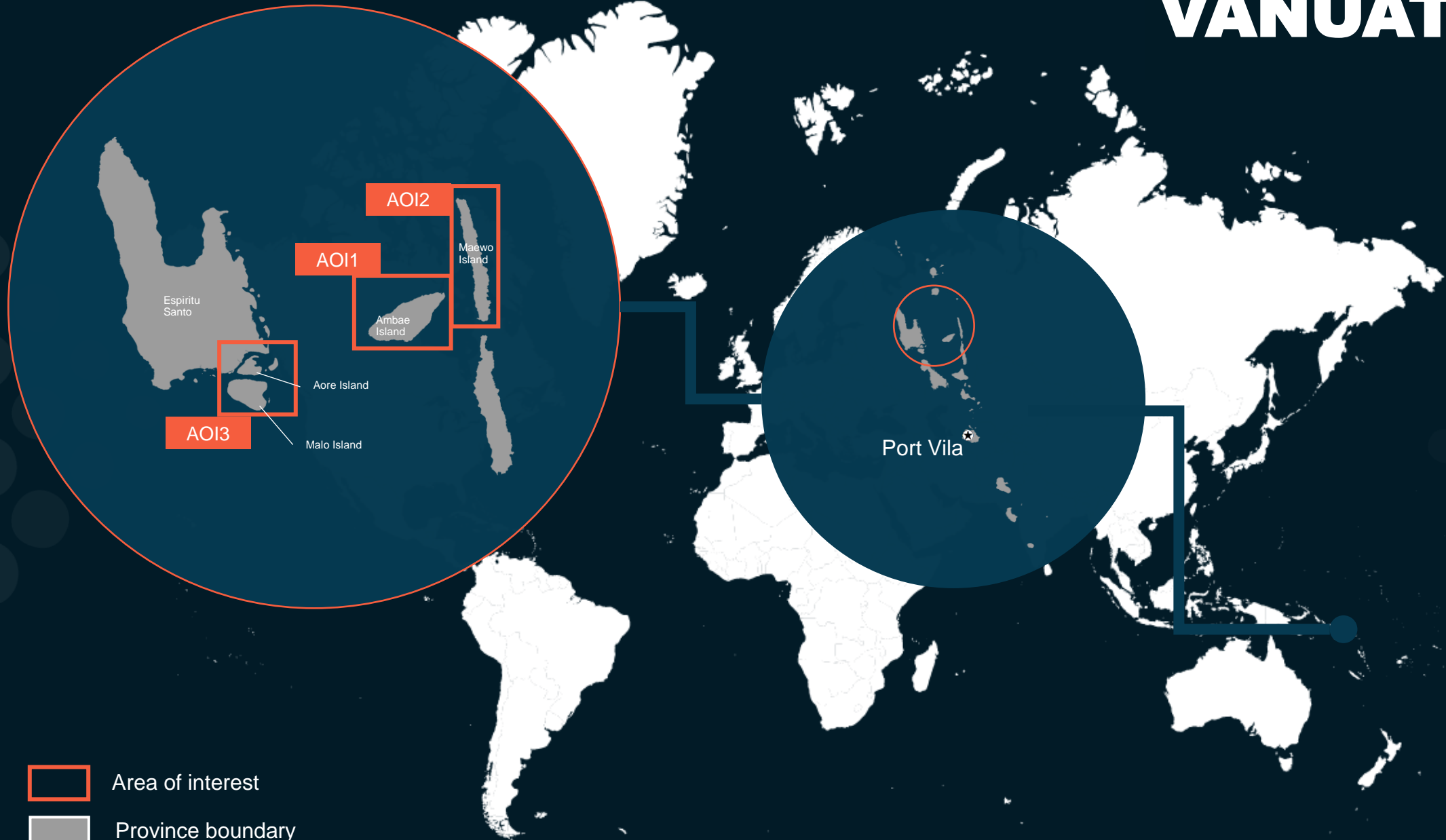


Espiritu Santo & Aore Islands, Sanma Province – Ambae & Maewo Islands, Penama Province, Vanuatu

 Status: Widespread damage observed in Espiritu Santo Island

 Further action(s): Continue monitoring

# VANUATU



# AOI 1 – 1: Saratamata Village, Ambae Island, Penama Province

Damaged structures

Image center:  
15°17'15"S  
167°59'26"E



WorldView-2 / 21 April 2021



Pleiades / 26 October 2023 / 10:03 Local Time



# AOI 1 – 2: Lomaki Hamlet, Ambae Island, Penama Province

Damaged structures

Image center:  
15°22'44"S  
167°43'47"E



WorldView-2 / 06 May 2022



Pleiades / 26 October 2023 / 10:03 Local Time



# AOI 2 – 1: Asanvari Village, Maewo Island, Penama Province

Destroyed structures

Image center:  
15°22'50"S  
168°07'47"E



WorldView-2 / 21 July 2020



Pleiades / 26 October 2023 / 10:03 Local Time



# AOI 2 – 2: Naviso Village, Maewo Island, Penama Province

Damaged structures

Image center:  
15°07'17"S  
168°08'36"E



WorldView-2 / 27 April 2021



Pleiades / 26 October 2023 / 10:03 Local Time



# AOI 2 – 3: Verue Hamlet, Maewo Island, Penama Province

Potentially affected structures

Image center:  
14°56'20"S  
168°03'18"E



WorldView-2 / 27 April 2021



Pleiades / 26 October 2023 / 10:03 Local Time



# AOI 3 – 1: Aore Island, Sanma Province

## Damaged structures

Image center:  
15°32'48"S  
167°11'19"E



WorldView-2 / 02 August 2021



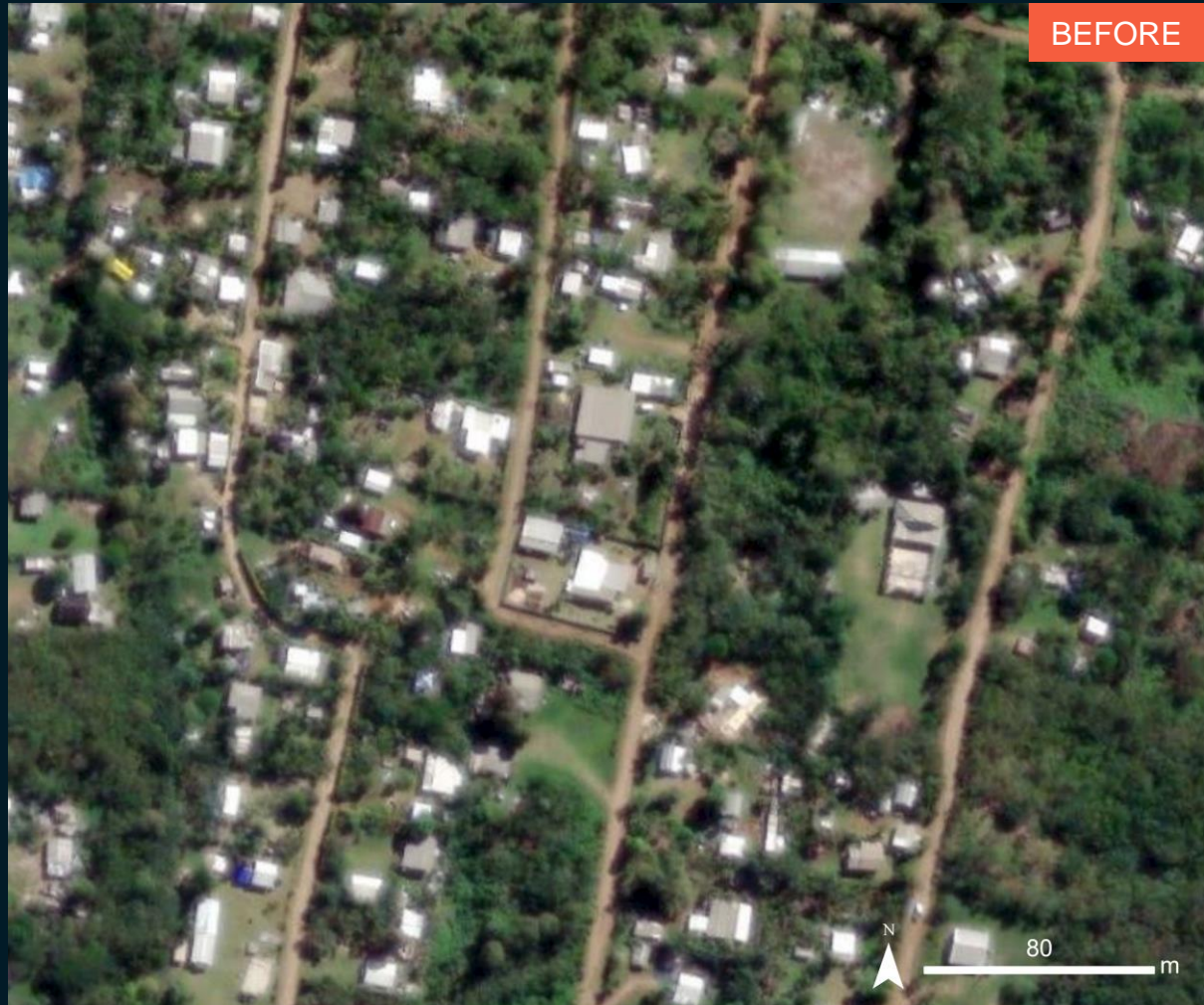
Pleiades / 26 October 2023 / 10:03 Local Time



# AOI 3 – 2: Banban village, Espiritu Santo Island, Sanma Province

Widespread damaged structures

Image center:  
15°30'55"S  
167°13'40"E



WorldView-2 / 02 August 2021



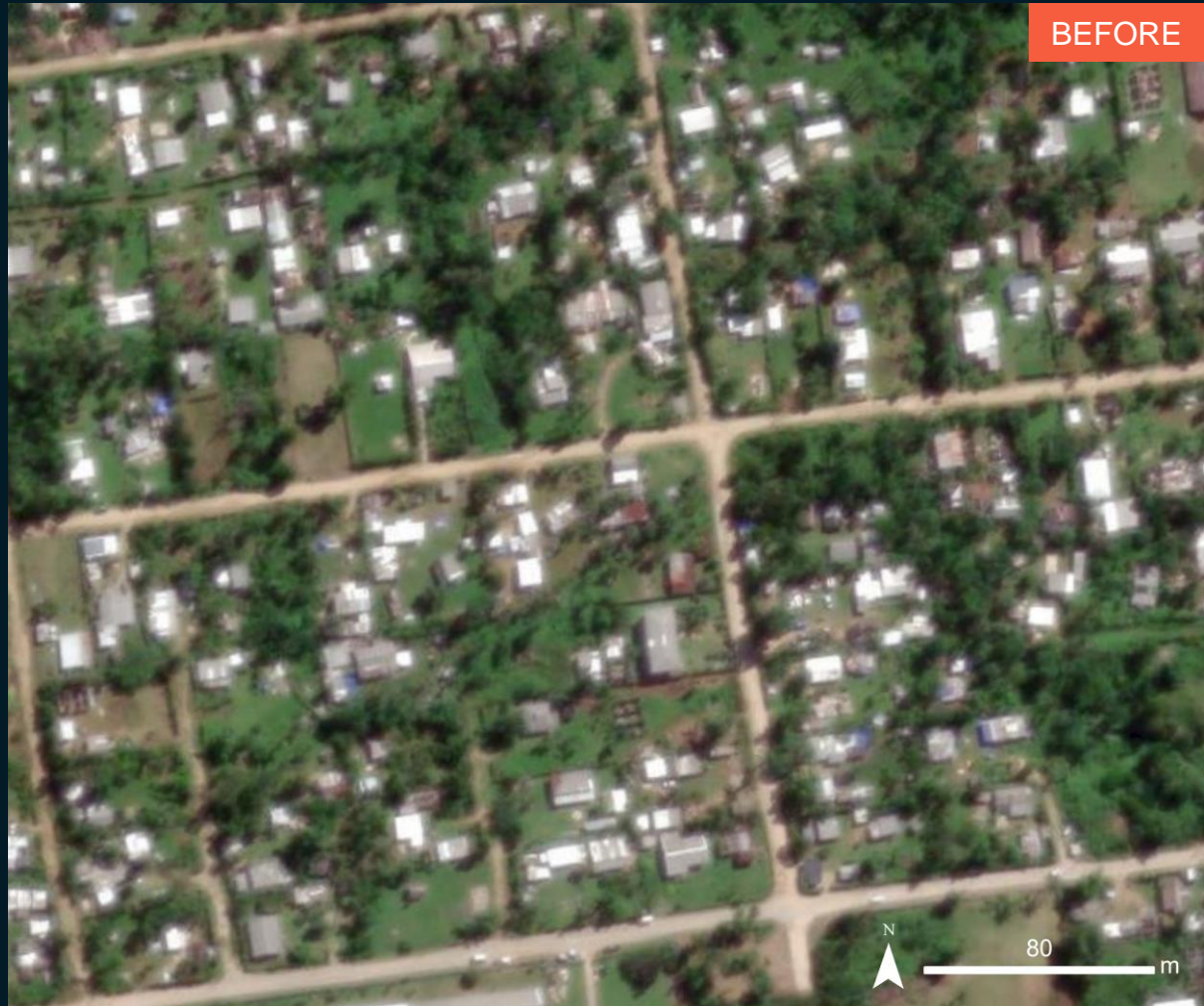
Pleiades / 26 October 2023 / 10:03 Local Time



# AOI 3 – 3: Luganville City, Espiritu Santo Island, Sanma Province

Widespread damaged structures

Image center:  
15°30'27"S  
167°10'10"E



GeoEye-1 / 30 April 2021



Pleiades / 26 October 2023 / 10:03 Local Time



# SUMMARY OF FINDINGS

---

- Damaged structures observed in Ambae Island, Penama Province as of 26 October 2023;
- Destroyed structures observed south of Maewo Island, Penama Province as of 26 October 2023;
- Damaged and potentially damaged structures observed in Maewo Island, Penama Province as of 26 October 2023;
- Damaged structures observed in Aore Island, Sanma Province as of 26 October 2023;
- Widespread damaged structures observed in Luganville town, Espiritu Santo Island, Sanma Province as of 26 October 2023.



# COPYRIGHTS AND SOURCES

## Data sources:

(1) Satellite Image (Post-event): Pléiades

Imagery date: 25 October 2023, 23:03 UTC

Resolution: 50cm

Copyright: Includes Pleiades material © AIRBUS DS (2023)

Source: Airbus D&S

(2) Satellite Image (Pre-event): ESRI Basemap

(3) Ancillary data

Populated place: OpenStreetMap

Administrative boundaries: HDX, UNOCHA

Analysis: UNITAR-UNOSAT

Production: UNITAR-UNOSAT



 **@UNOSAT**

 **@UNITAR.unosat**

 **/UNOSAT**



**UNOSAT**, United Nations Institute for Training  
and Research (UNITAR)  
7 bis, Avenue de la Paix, CH-1202 Geneva 2,  
Switzerland

T +41 22 917 4720  
E [unosat@unitar.org](mailto:unosat@unitar.org)  
[www.unosat.org](http://www.unosat.org)