



SATELLITE IMAGERY-DERIVED EARTHQUAKE DAMAGE ASSESSMENT

Adassil/Al Haouz, 6.8M earthquake of 08-09-2023 (22:11 UTC) Chichaoua & Al Houz Province, Marrakech- Tensifit – Al Haouz Region, Morocco



14 September 2023

Destroyed and Damaged buildings observed in Marrakech - Tensift - Al Haouz Region, Morocco



2900

Number of Deaths

5500

Number of Injured

Source: CBS news.com 12th September 2023

Legend

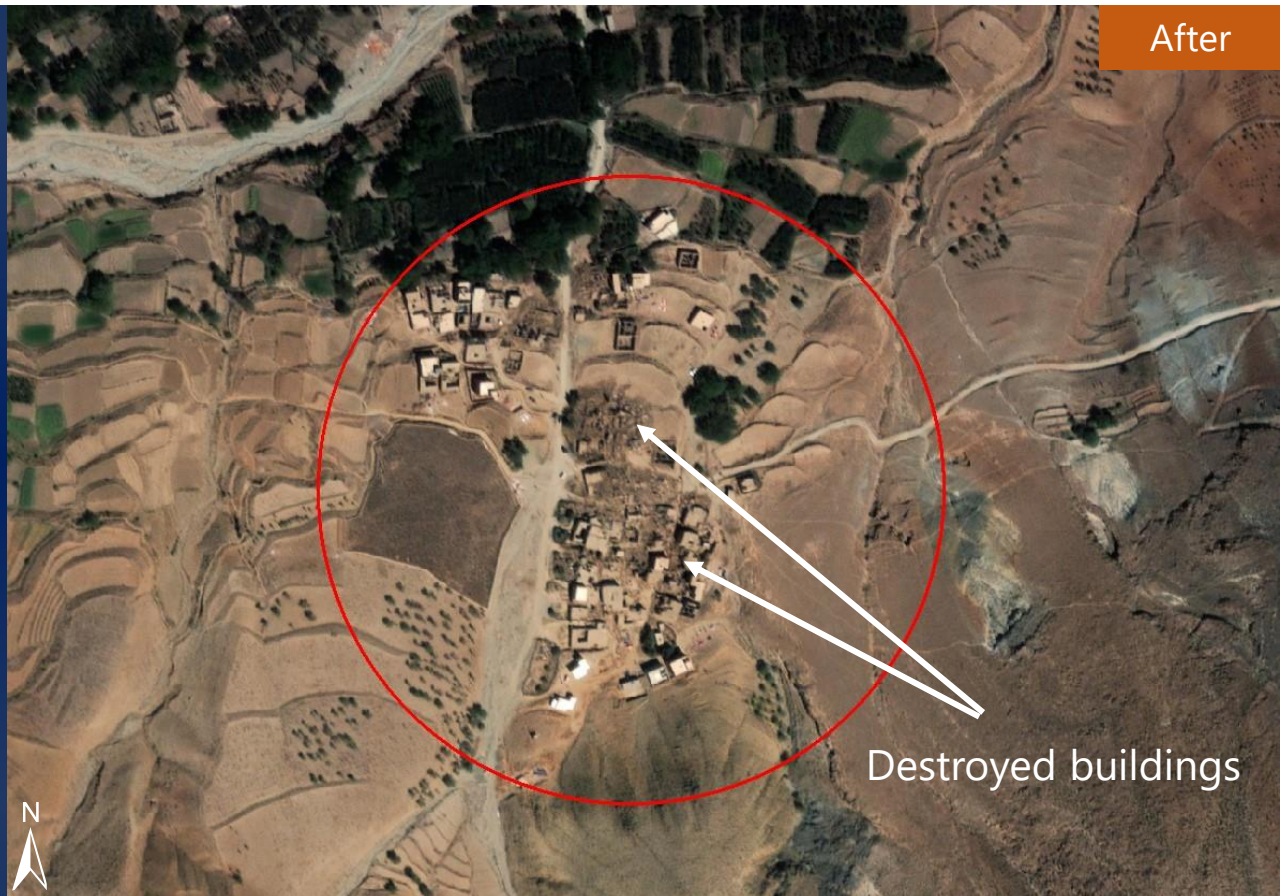
-  Area analyzed
-  Administrative boundary

Ardouz Village, Chichaoua Province, Marrakech - Tensift - Al Haouz Region, Morocco

Image center
8°21'29.712"W
31°6'25.304"N



Before



After

Destroyed buildings

ESRI Base map

Maxar : 10 September 2023

Satellite Image

Post event: Maxar's Worldview 2 and Worldview 3 data
Pre event: Esri Base map

Ancillary Data

Administrative boundaries: <https://www.diva-gis.org/gdata>

Disclaimer

Accuracy of the product is not validated by ground truth data



Ait Ihla Village, Chichaoua Province, Marrakech - Tensift - Al Haouz Region, Morocco

Image center

8°21'35.615"W

31°6'39.492"N



مركز محمد بن راشد
للفضاء

MOHAMMED BIN RASHID SPACE CENTRE



Before



After

Destroyed buildings

ESRI Base map

Maxar : 10 September 2023

Satellite Image

Post event: Maxar's Worldview 2 and Worldview 3 data

Pre event: Esri Base map

Ancillary Data

Administrative boundaries: <https://www.diva-gis.org/gdata>

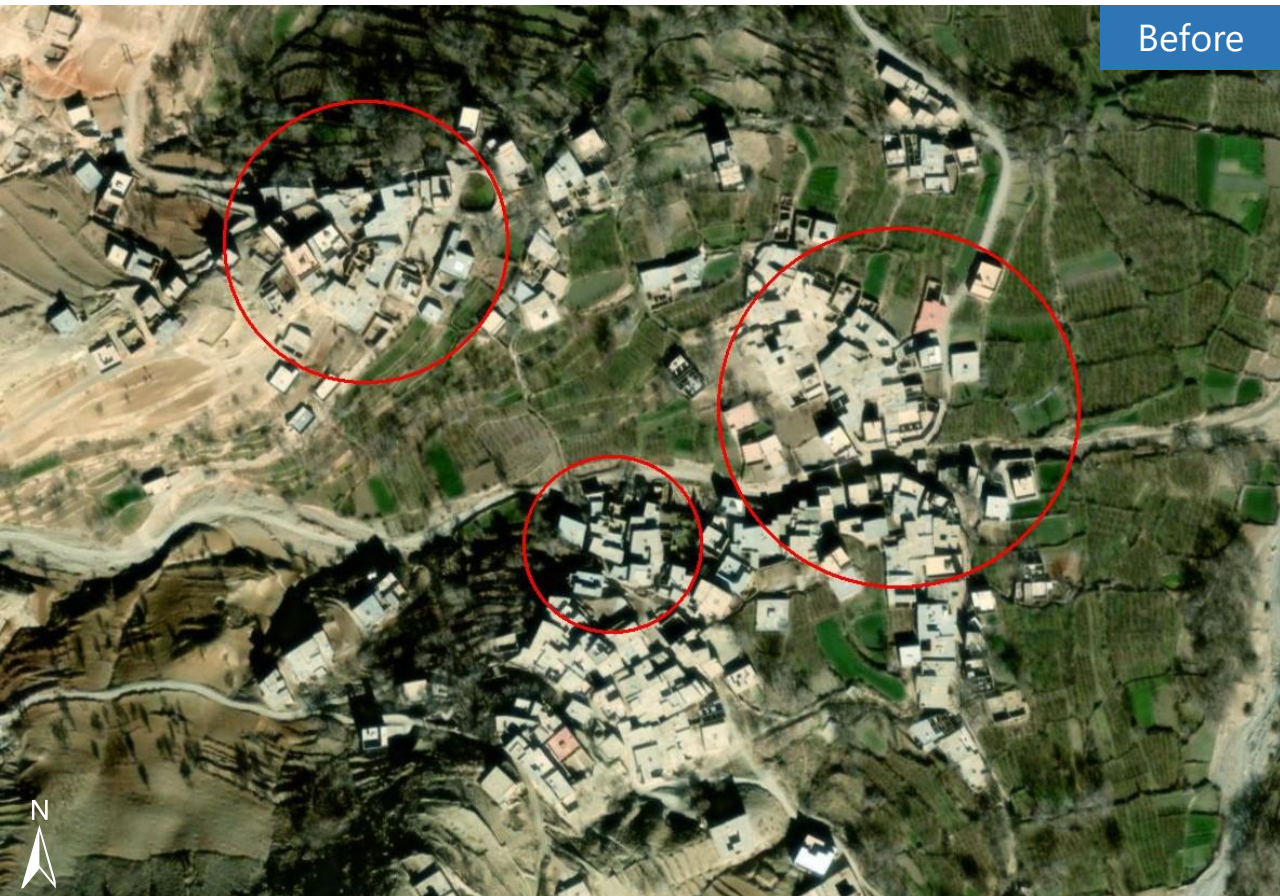
Disclaimer

Accuracy of the product is not validated by ground truth data

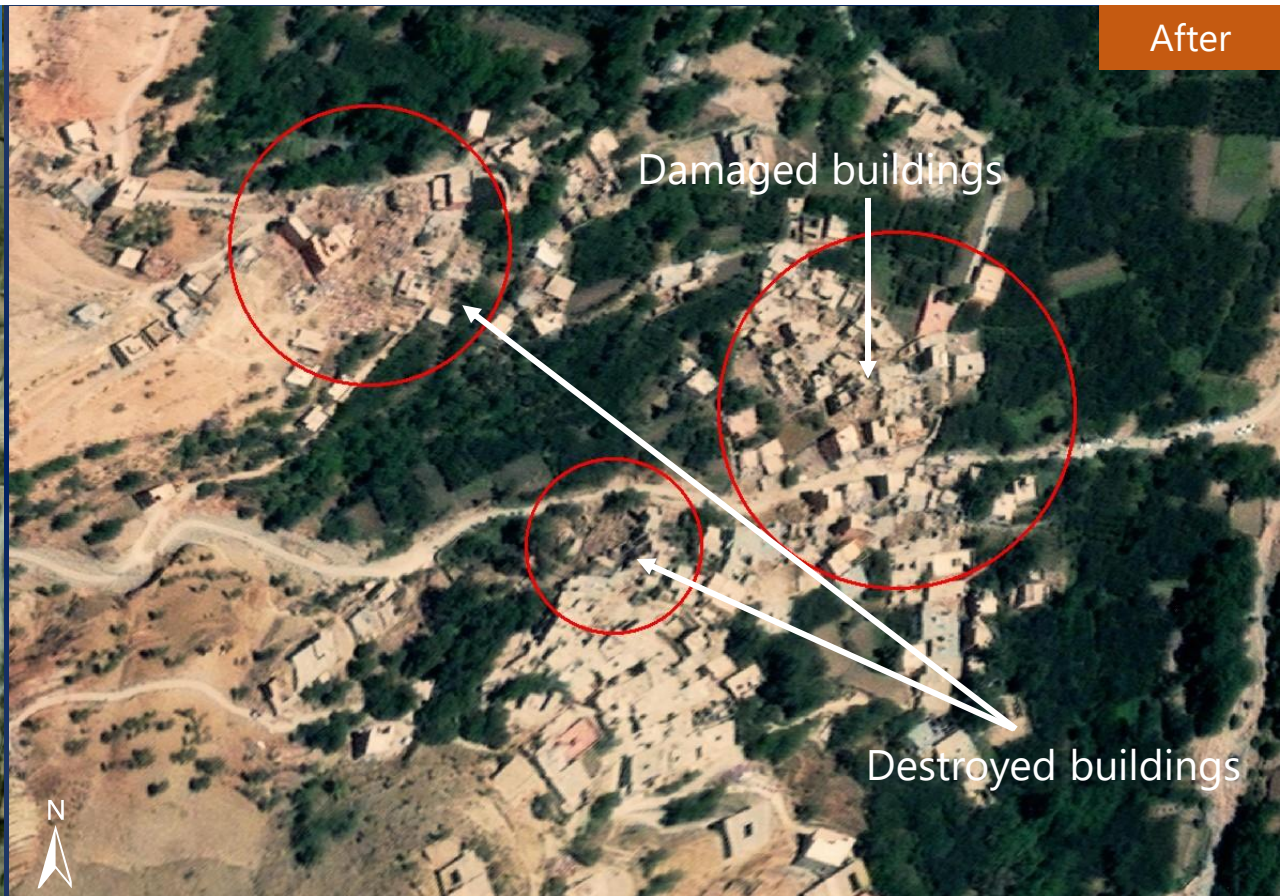


Tnirte Village, Al Haouz Province, Marrakech - Tensift - Al Haouz Region, Morocco

Image center
8°19'8.985"W
31°6'20.742"N



Before



After

Damaged buildings

Destroyed buildings

ESRI Base map

Maxar : 10 September 2023

Satellite Image

Post event: Maxar's Worldview 2 and Worldview 3 data
Pre event: Esri Base map

Ancillary Data

Administrative boundaries: <https://www.diva-gis.org/gdata>

Disclaimer

Accuracy of the product is not validated by ground truth data

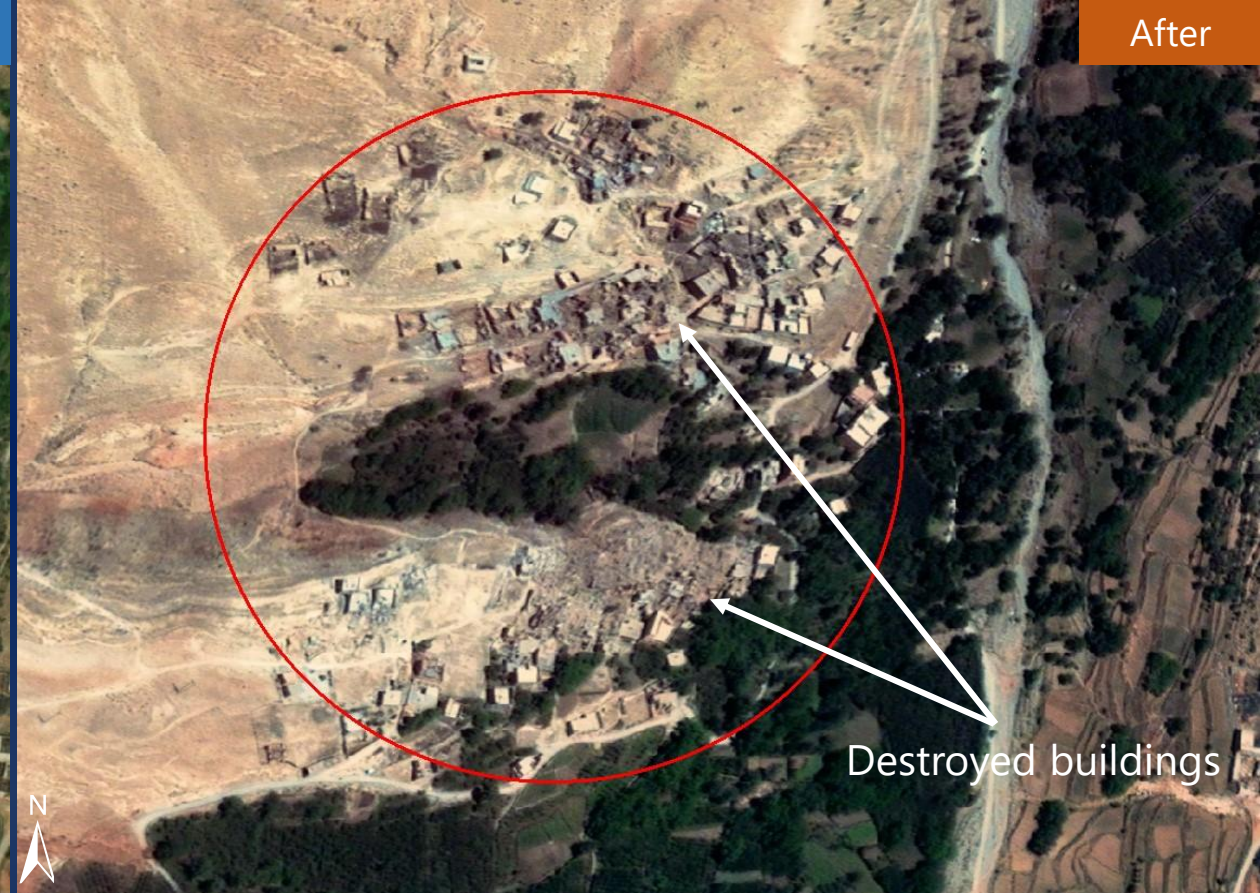


Anerni Village, Al Haouz Province, Marrakech - Tensift - Al Haouz Region, Morocco

Image center
8°19'0.173"W
31°7'6.301"N



Before



After

Destroyed buildings

ESRI Base map

Maxar : 10 September 2023

Satellite Image

Post event: Maxar's Worldview 2 and Worldview 3 data
Pre event: Esri Base map

Ancillary Data

Administrative boundaries: <https://www.diva-gis.org/gdata>

Disclaimer

Accuracy of the product is not validated by ground truth data

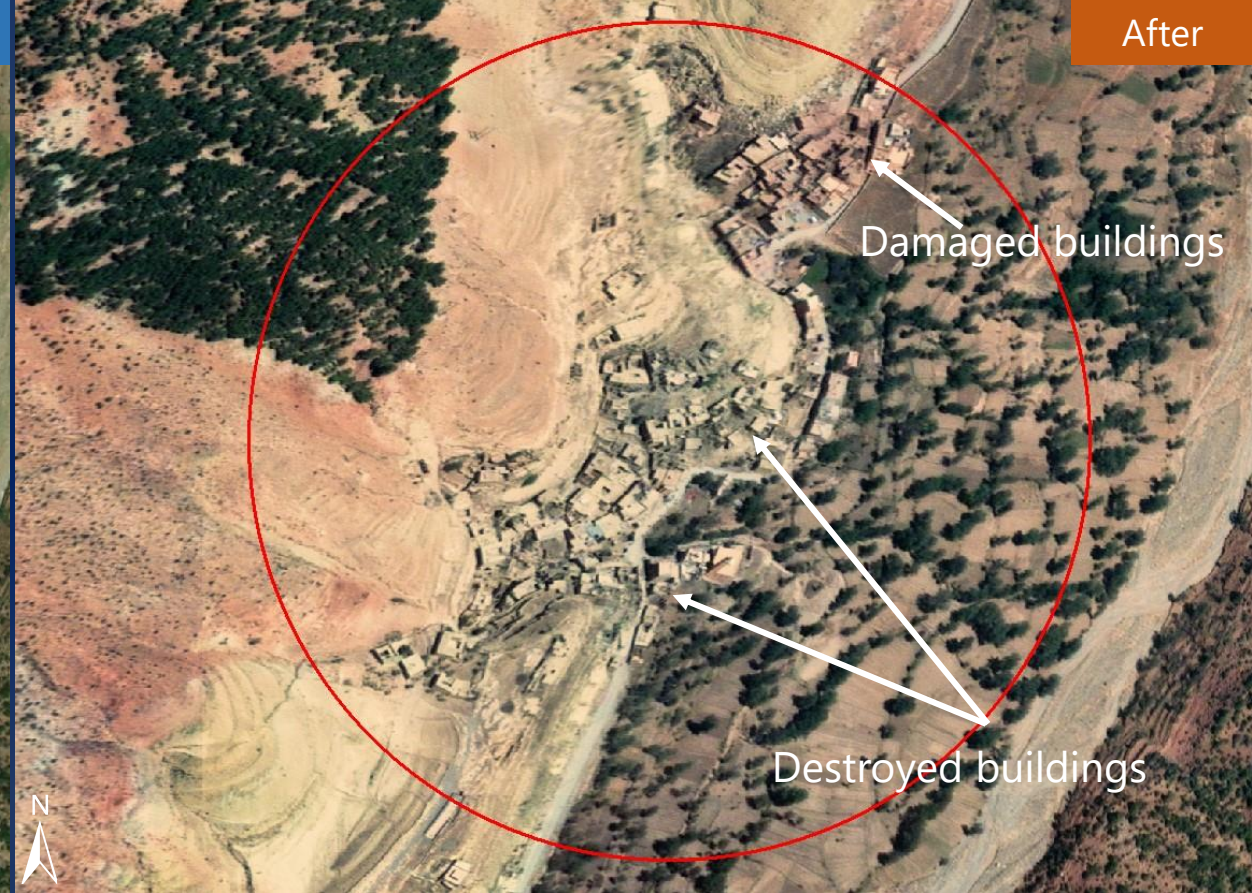


Azgour Village, Al Haouz Province, Marrakech - Tensift - Al Haouz Region, Morocco

Image center
8°18'46.273"W
31°8'16.539"N



Before



After

Damaged buildings

Destroyed buildings

ESRI Base map

Maxar : 10 September 2023

Satellite Image

Post event: Maxar's Worldview 2 and Worldview 3 data
Pre event: Esri Base map

Ancillary Data

Administrative boundaries: <https://www.diva-gis.org/gdata>

Disclaimer

Accuracy of the product is not validated by ground truth data



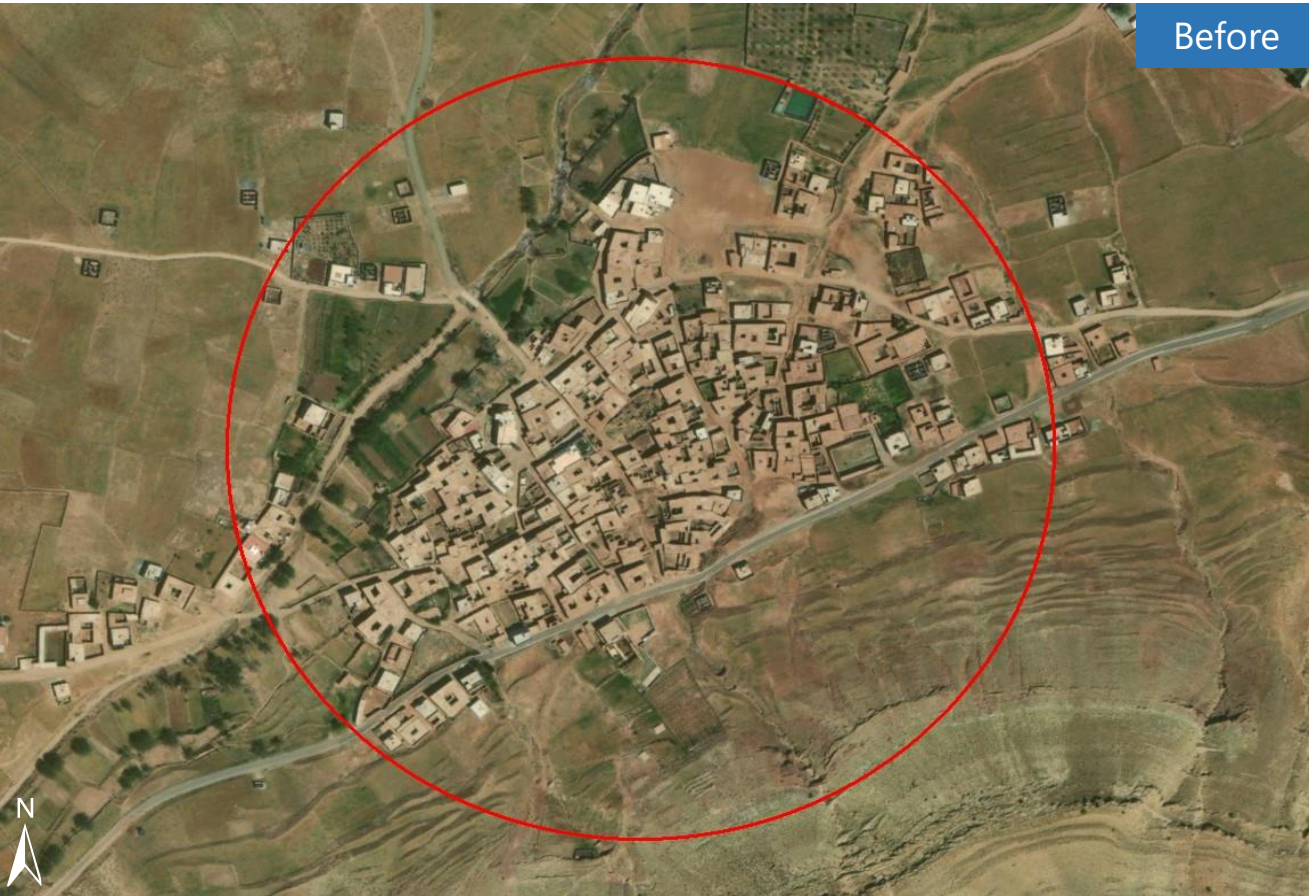
Toulkine Village, Al Haouz Province, Marrakech - Tensift - Al Haouz Region, Morocco

Image center

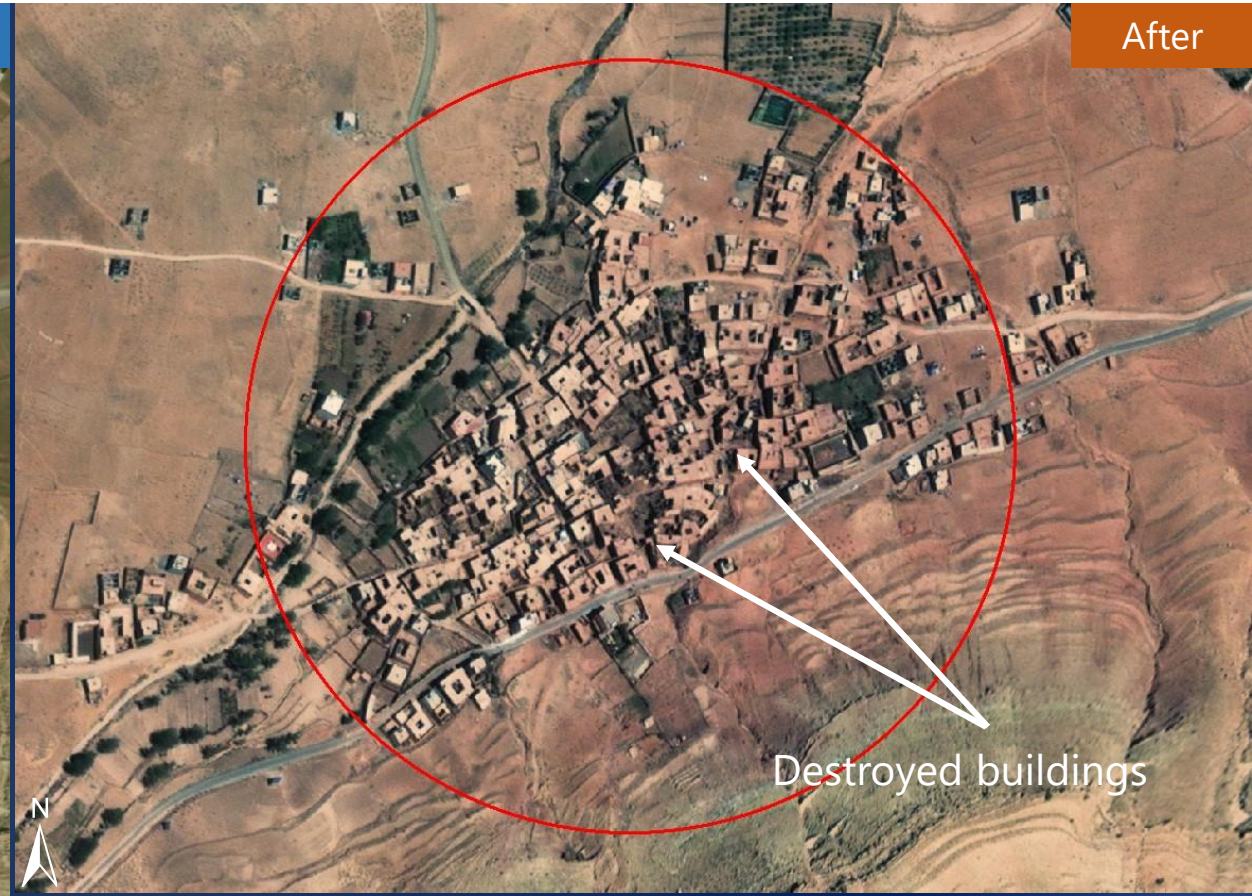
8°19'45.94"W
31°9'42.299"N



مركز محمد بن راشد
للفضاء
MOHAMMED BIN RASHID SPACE CENTRE



Before



After

Destroyed buildings

ESRI Base map

Maxar : 10 September 2023

Satellite Image

Post event: Maxar's Worldview 2 and Worldview 3 data
Pre event: Esri Base map

Ancillary Data

Administrative boundaries: <https://www.diva-gis.org/gdata>

Disclaimer

Accuracy of the product is not validated by ground truth data



Imi N'Tala Village, Al Haouz Province, Marrakech - Tensift - Al Haouz Region, Morocco

Image center

8°16'0.822"W
31°7'44.878"N



مركز محمد بن راشد
للفضاء
MOHAMMED BIN RASHID SPACE CENTRE



ESRI Base map

Maxar : 10 September 2023

Satellite Image

Post event: Maxar's Worldview 2 and Worldview 3 data
Pre event: Esri Base map

Ancillary Data

Administrative boundaries: <https://www.diva-gis.org/gdata>

Disclaimer

Accuracy of the product is not validated by ground truth data



Ineghede Village, Al Haouz Province, Marrakech - Tensift - Al Haouz Region, Morocco

Image center
8°15'54.644"W
31°8'11.22"N



Before



After

Destroyed buildings

ESRI Base map

Maxar : 10 September 2023

Satellite Image

Post event: Maxar's Worldview 2 and Worldview 3 data
Pre event: Esri Base map

Ancillary Data

Administrative boundaries: <https://www.diva-gis.org/gdata>

Disclaimer

Accuracy of the product is not validated by ground truth data



Imi N'Isli, Village, Al Haouz Province, Marrakech - Tensift - Al Haouz Region, Morocco

Image center
8°15'48.244"W
31°8'53.212"N



مركز محمد بن راشد
للفضاء
MOHAMMED BIN RASHID SPACE CENTRE



Before



After

Damaged buildings

Destroyed buildings

ESRI Base map

Maxar : 10 September 2023

Disclaimer

Accuracy of the product is not validated by ground truth data

Satellite Image

Post event: Maxar's Worldview 2 and Worldview 3 data

Pre event: Esri Base map

Ancillary Data

Administrative boundaries: <https://www.diva-gis.org/gdata>



Tagheryouste, Village, Al Haouz Province, Marrakech - Tensift - Al Haouz Region, Morocco

Image center
8°12'14.153"W
31°11'45.152"N



Before



After

Destroyed buildings

ESRI Base map

Maxar : 10 September 2023

Satellite Image

Post event: Maxar's Worldview 2 and Worldview 3 data
Pre event: Esri Base map

Ancillary Data

Administrative boundaries: <https://www.diva-gis.org/gdata>

Disclaimer

Accuracy of the product is not validated by ground truth data



Agouni, Village, Al Haouz Province, Marrakech - Tensift - Al Haouz Region, Morocco

Image center

8°12'1.712"W
31°12'1.405"N



مركز محمد بن راشد
للفضاء
MOHAMMED BIN RASHID SPACE CENTRE



Before



After

Destroyed buildings

ESRI Base map

Maxar : 10 September 2023

Satellite Image

Post event: Maxar's Worldview 2 and Worldview 3 data

Pre event: Esri Base map

Ancillary Data

Administrative boundaries: <https://www.diva-gis.org/gdata>

Disclaimer

Accuracy of the product is not validated by ground truth data



Tizgui, Village, Al Haouz Province, Marrakech - Tensift - Al Haouz Region, Morocco

Image center
8°11'42.729"W
31°11'36.997"N



Before



After

Damaged buildings

ESRI Base map

Maxar : 10 September 2023

Satellite Image

Post event: Maxar's Worldview 2 and Worldview 3 data
Pre event: Esri Base map

Ancillary Data

Administrative boundaries: <https://www.diva-gis.org/gdata>

Disclaimer

Accuracy of the product is not validated by ground truth data

