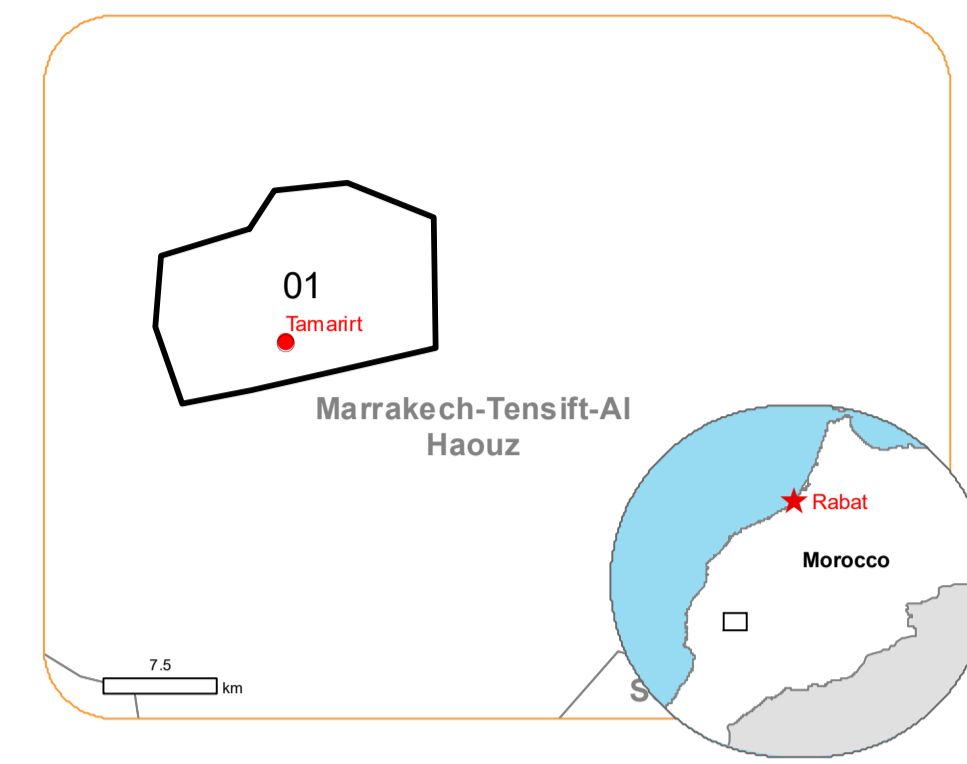


EMSR695 - AOI01
 Earthquake in Morocco
 TAMARIRT

Situation as of 10/09/2023 11:16 UTC
 Grading - Overview map 01



Potentially affected population
 - Not available

Affected Built-up and Transportations

Built-Up 273 No.
 Road 0.8 km

- | | |
|--|----------------------------------|
| Crisis Information | General Information |
| Built-Up Grading | Area of Interest |
| Residential Building, Possibly damaged | Detail map |
| Residential Building, Destroyed | Administrative boundaries |
| Residential Building, Damaged | Municipality |
| Transportation Grading | Placenames |
| Main road, No visible damage | Placename |
| Track, No visible damage | Hydrography |
| Local road, No visible damage | River |
| Road, Damaged | |
| Road, Possibly damaged | |

Event: On the 08 September 2023 at 22:11 UTC, an earthquake is reported to have affected the Marrakesh-Safi Region of Morocco. The epicentre was approximately 72 km South-West from Marrakesh city (population of 840,000 people). Many casualties are reported and it is thought that many people are still trapped under the rubble or injured. Copernicus EMS Rapid Mapping is requested to provide damage assessment.

Data sources and analysis:
 Pre-event image: ESRI World Imagery © DigitalGlobe (acquired on 07/07/2022, resolution 0.6 m).
 Post-event image: Pléiades-1A © CNES (2023), distributed by Airbus DS (acquired on 10/09/2023 at 11:16 UTC, resolution 0.5 m). This image is used as background image. Image provided by the International Charter (call ID 838), all rights reserved.

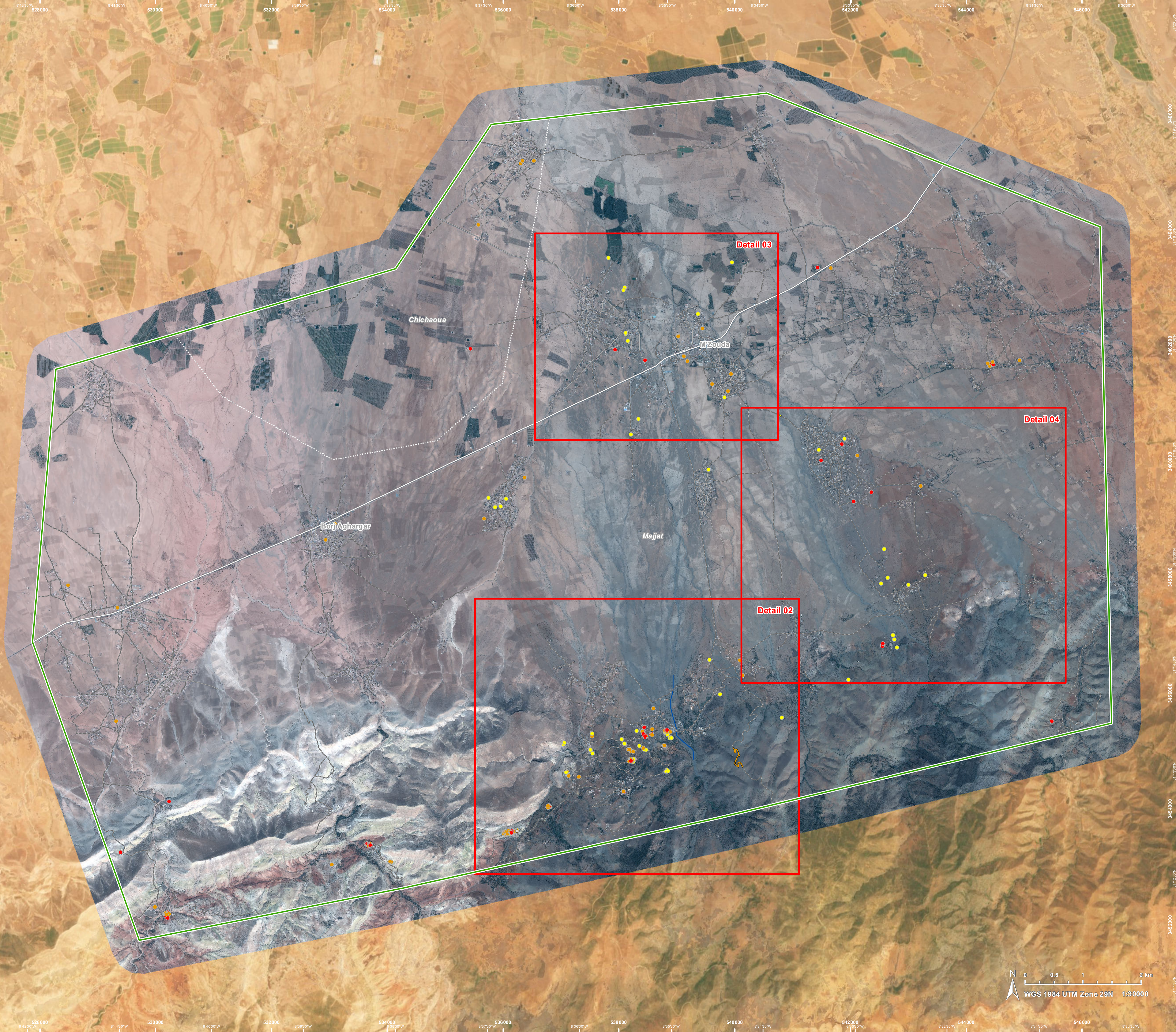
Base vector layers: OpenStreetMap © OpenStreetMap contributors (2023), Wikimapia.org, GeoNames 2015, Global Administrative Areas (2012), refined by the producer, Globe Land 30 (2010), Copernicus Global Land Service: Land Cover (2019).
 Inset maps: JRC 2013, Natural Earth 2012, GeoNames 2015.

Population data: GHS Population Grid © European Commission, 2023 https://ghsl.jrc.ec.europa.eu/ghs_pop2023.php

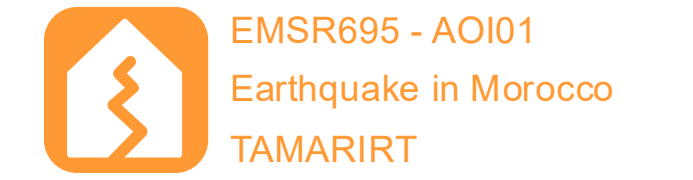
The thematic layer has been derived from post-event satellite image by means of visual interpretation.

Map produced by GAF AG released by SERTIT on the 12/09/2023.

Details on this activation and service conditions available through the QR code or at the link: <https://rapidmapping.emergency.copernicus.eu/EMSR695>

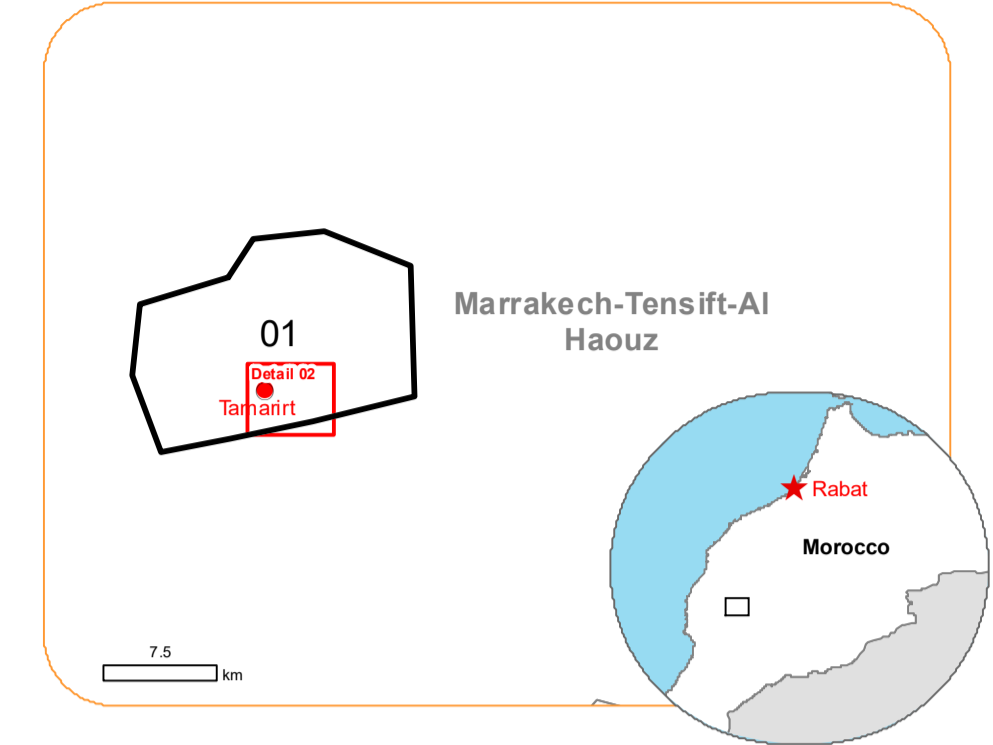


0 0.5 1 2 km
 WGS 1984 UTM Zone 29N 1:30000



Situation as of 10/09/2023 11:16 UTC

Grading - Detail map 02



Potentially affected population
~ Not available

Affected Built-up and Transportations

Built-Up 163 No. (59.7% of total affected)
 Road 0.8 km (100% of total affected)

Crisis Information

Built-Up Grading

- Residential Building, Possibly damaged
- Residential Building, Destroyed
- Residential Building, Damaged

Transportation Grading

- Track, No visible damage
- Road, Damaged

General Information

Area of Interest

Placenames

Placename

Event: On the 08 September 2023 at 22:11 UTC, an earthquake is reported to have affected the Marrakesh-Safi Region of Morocco. The epicentre was approximately 72 km South-West from Marrakesh city (population of 840,000 people). Many casualties are reported and it is thought that many people are still trapped under the rubble or injured. Copernicus EMS Rapid Mapping is requested to provide damage assessment.

Data sources and analysis:
Pre-event image: ESRI World Imagery © DigitalGlobe (acquired on 07/07/2022, resolution 0.6 m).
Post-event image: Pléiades-1A © CNES (2023), distributed by Airbus DS (acquired on 10/09/2023 at 11:16 UTC, resolution 0.5 m). This image is used as background image. Image provided by the International Charter (call ID 838), all rights reserved.

Base vector layers: OpenStreetMap © OpenStreetMap contributors (2023), Wikimapia.org, GeoNames 2015, Global Administrative Areas (2012), refined by the producer. Globe Land 30 (2010), Copernicus Global Land Service: Land Cover (2019).
Inset maps: JRC 2013, Natural Earth 2012, GeoNames 2015.

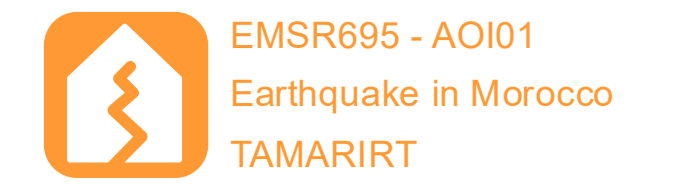
Population data: GHS Population Grid © European Commission, 2023 https://ghsl.jrc.ec.europa.eu/ghs_pop2023.php

The thematic layer has been derived from post-event satellite image by means of visual interpretation.

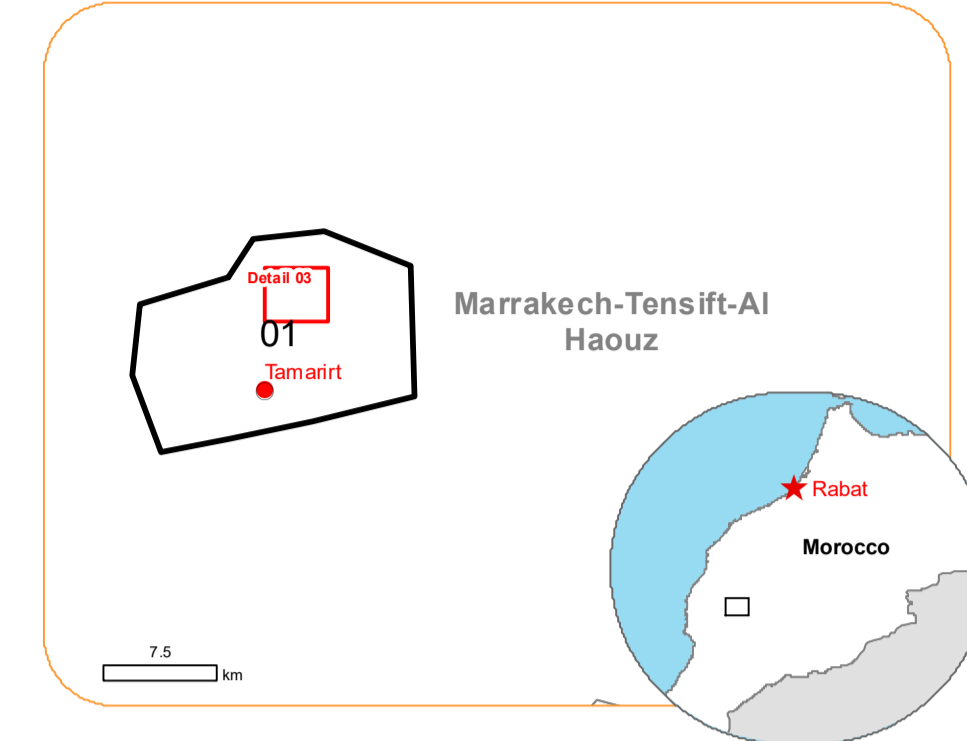
Map produced by GAF AG released by SERTIT on the 12/09/2023.

Details on this activation and service conditions available through the QR code or at the link: <https://rapidmapping.emergency.copernicus.eu/EMSR695>





Situation as of 10/09/2023 11:16 UTC
Grading - Detail map 03



Potentially affected population
~ Not available

Affected Built-up and Transportations

Built-Up 24 No.
(8.8% of total affected)

Crisis Information

- Residential Building, Possibly damaged
- Residential Building, Destroyed
- Residential Building, Damaged

Transportation Grading

- Main road, No visible damage
- Track, No visible damage
- Local road, No visible damage
- Road, Possibly damaged

General Information

- Area of Interest
- Administrative boundaries
- Municipality
- Placenames

Event: On the 08 September 2023 at 22:11 UTC, an earthquake is reported to have affected the Marrakesh-Safi Region of Morocco. The epicentre was approximately 72 km South-West from Marrakesh city (population of 840,000 people). Many casualties are reported and it is thought that many people are still trapped under the rubble or injured. Copernicus EMS Rapid Mapping is requested to provide damage assessment.

Data sources and analysis:
Pre-event image: ESRI World Imagery © DigitalGlobe (acquired on 07/07/2022, resolution 0.6 m).
Post-event image: Pléiades-1A © CNES (2023), distributed by Airbus DS (acquired on 10/09/2023 at 11:16 UTC, resolution 0.5 m). This image is used as background image. Image provided by the International Charter (call ID 838), all rights reserved.

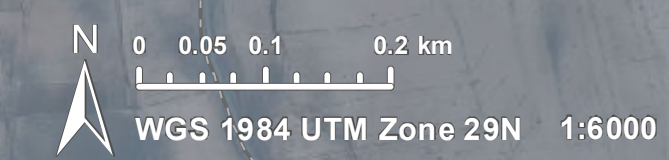
Base vector layers: OpenStreetMap © OpenStreetMap contributors (2023), Wikimapia.org, GeoNames 2015, Global Administrative Areas (2012), refined by the producer. Globe Land 30 (2010), Copernicus Global Land Service: Land Cover (2019).

Population data: GHS Population Grid © European Commission, 2023
https://ghsl.jrc.ec.europa.eu/ghs_pop2023.php

The thematic layer has been derived from post-event satellite image by means of visual interpretation.

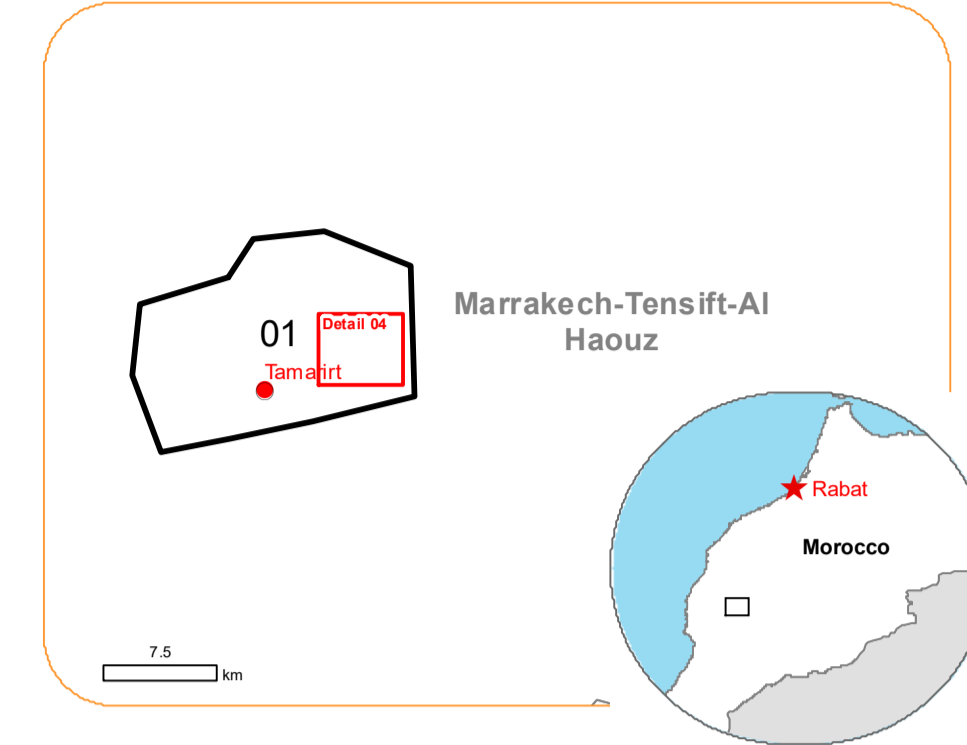
Map produced by GAF AG released by SERTIT on the 12/09/2023.

Details on this activation and service conditions available through the QR code or at the link:
<https://rapidmapping.emergency.copernicus.eu/EMSR695>



EMSR695 - AOI01
Earthquake in Morocco
TAMARIRT

Situation as of 10/09/2023 11:16 UTC
Grading - Detail map 04



Potentially affected population
~ Not available

Affected Built-up and Transportations

Built-Up 22 No. (8.1% of total affected)
 Road 0.1 km (12.5% of total affected)

Crisis Information **General Information**

Built-Up Grading Area of Interest

- Residential Building, Possibly damaged
- Residential Building, Destroyed
- Residential Building, Damaged

Transportation Grading

- Track, No visible damage
- Road, Possibly damaged

Event: On the 08 September 2023 at 22:11 UTC, an earthquake is reported to have affected the Marrakesh-Safi Region of Morocco. The epicentre was approximately 72 km South-West from Marrakesh city (population of 840,000 people). Many casualties are reported and it is thought that many people are still trapped under the rubble or injured. Copernicus EMS Rapid Mapping is requested to provide damage assessment.

Data sources and analysis:
Pre-event image: ESRI World Imagery © DigitalGlobe (acquired on 07/07/2022, resolution 0.6 m).
Post-event image: Pléiades-1A © CNES (2023), distributed by Airbus DS (acquired on 10/09/2023 at 11:16 UTC, resolution 0.5 m). This image is used as background image. Image provided by the International Charter (call ID 838), all rights reserved.

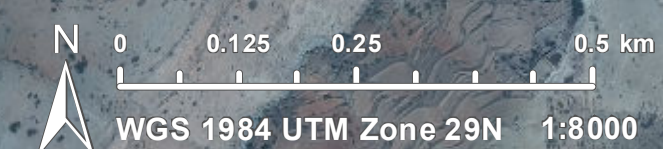
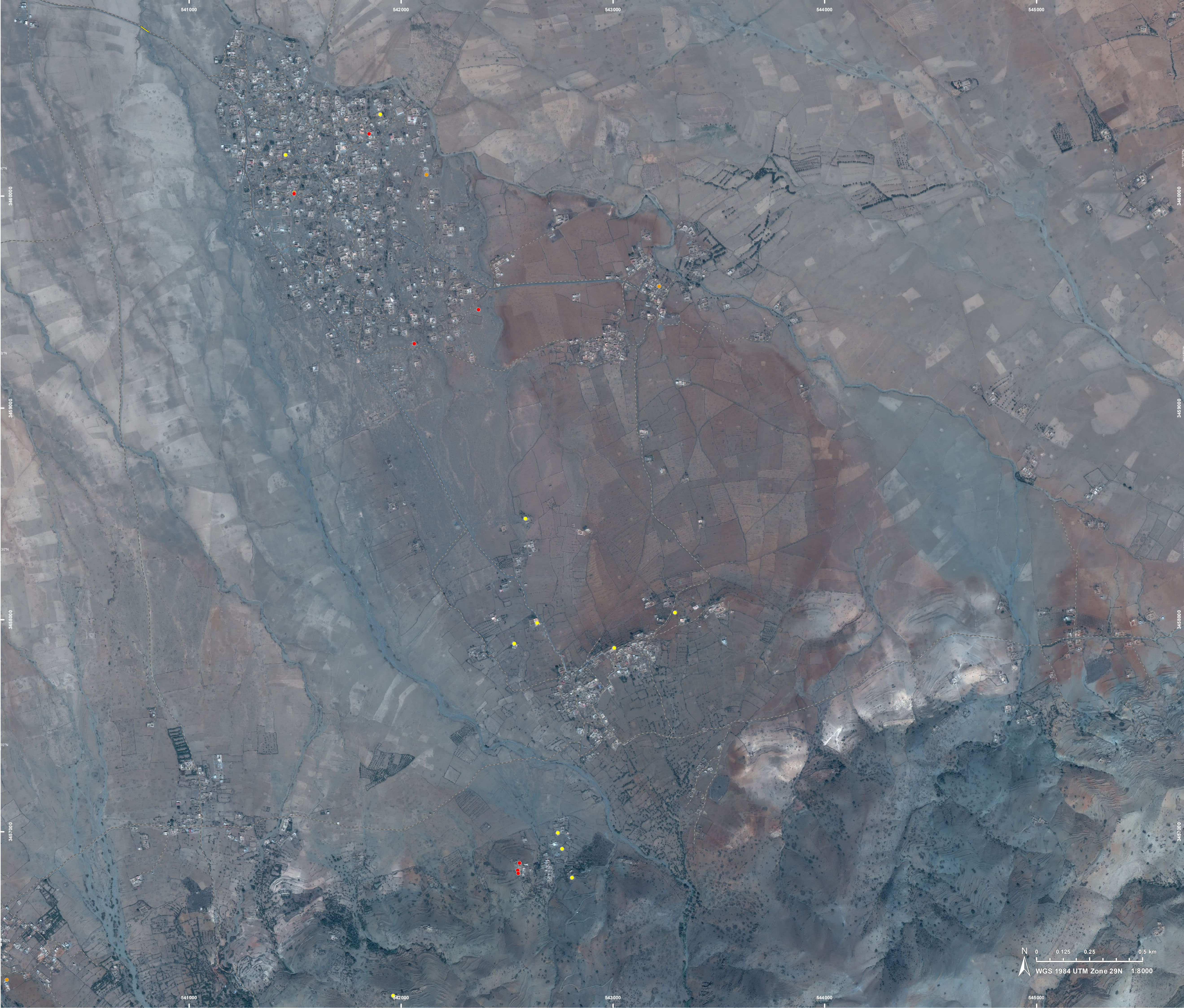
Base vector layers: OpenStreetMap © OpenStreetMap contributors (2023), Wikimapia.org, GeoNames 2015, Global Administrative Areas (2012), refined by the producer, Globe Land 30 (2010), Copernicus Global Land Service; Land Cover (2019).
Inset maps: JRC 2013, Natural Earth 2012, GeoNames 2015.

Population data: GHS Population Grid © European Commission, 2023
https://ghsl.jrc.ec.europa.eu/ghs_pop2023.php

The thematic layer has been derived from post-event satellite image by means of visual interpretation.

Map produced by GAF AG released by SERTIT on the 12/09/2023.

Details on this activation and service conditions available through the QR code or at the link:
<https://rapidmapping.emergency.copernicus.eu/EMSR695>



Consequences within the AOI							
	Unit of measurement	Destroyed	Damaged	Possibly damaged*	Total affected**	Total in AOI	
Estimated population	Number of inhabitants				NA	~ 36,000	
Built-up	Residential Buildings	No.	98	89	86	273	299
	Unclassified	No.	0	0	0	0	273
Transportation	Secondary Road	km	0.0	0.0	0.0	0.0	18.0
	Local Road	km	0.0	0.0	0.0	0.0	54.2
	Cart Track	km	0.0	0.8	0.1	0.8	257.2
Land use	Heterogeneous agricultural areas	ha	0.0	0.0	0.0	0.0	55,871.1
	Forests	ha	0.0	0.0	0.0	0.0	440.7
	Shrub and/or herbaceous vegetation association	ha	0.0	0.0	0.0	0.0	9,750.9
	Open spaces with little or no vegetation	ha	0.0	0.0	0.0	0.0	470.0
	Other	ha	0.0	0.0	0.0	0.0	366.5
* Presence of damage proxies and proximity with destroyed/damaged asset							
** Sum of all damage classes							

Disclaimer:

Full disclaimer and other helpful information available in the online manual:
<https://emergency.copernicus.eu/mapping/ems/online-manual-rapid-mapping-products>
 © European Union / Copernicus Emergency Management Service

Data access:

All data displayed on the map(s), as well as Land Use - Land Cover layer(s), are available in the Crisis Information Package and the Base Layer Package (for reference data). The table above is available in editable format in the Crisis Information Package. All products and data are also available for download on the portal.

Access to the portal

