


11 May 2023

# PRELIMINARY SATELLITE-DERIVED LANDSLIDE ASSESSMENT



Kalehe Territory, Sud-Kivu Province and Masisi Territory,  
Nord-Kivu Province, Democratic Republic of the Congo

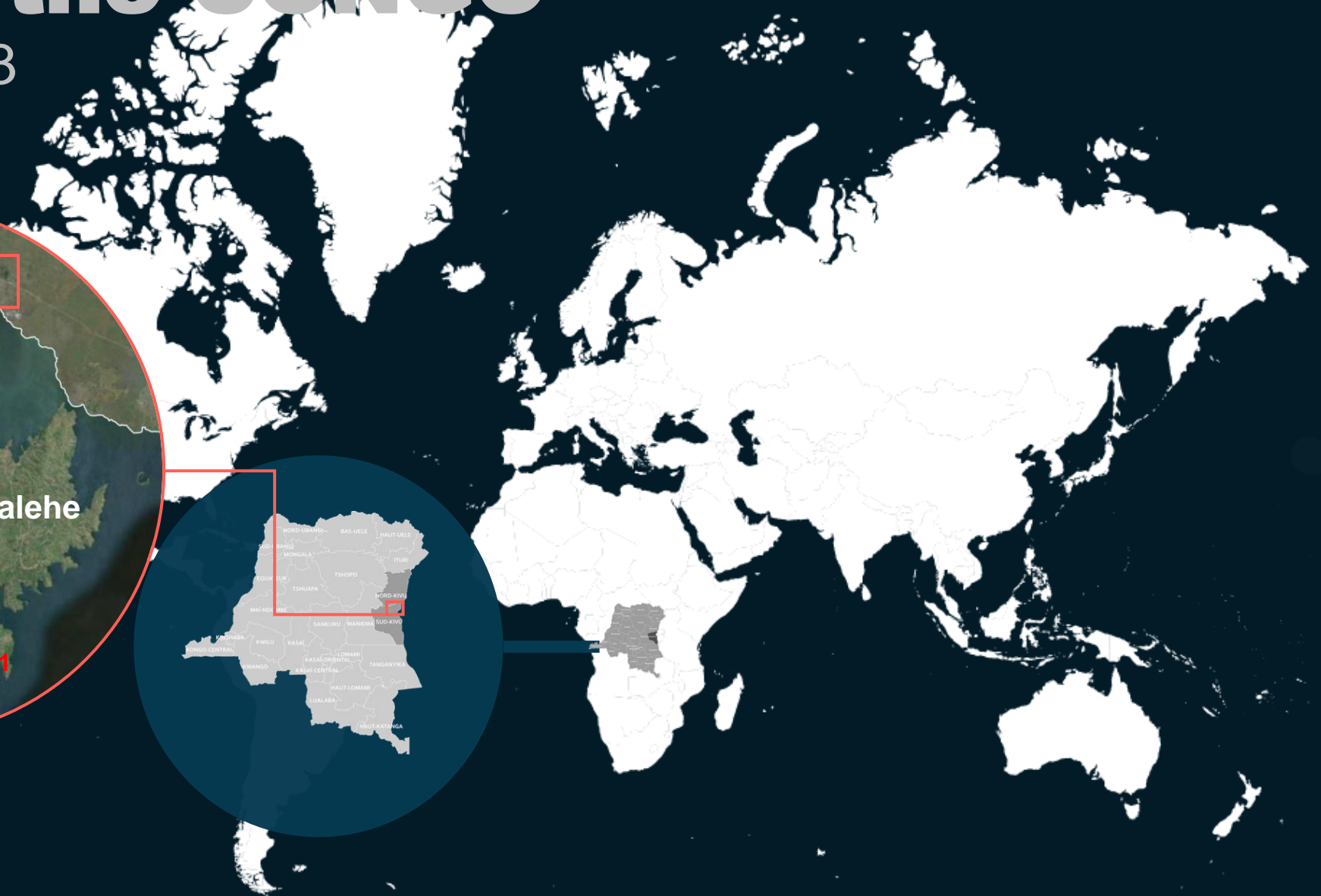
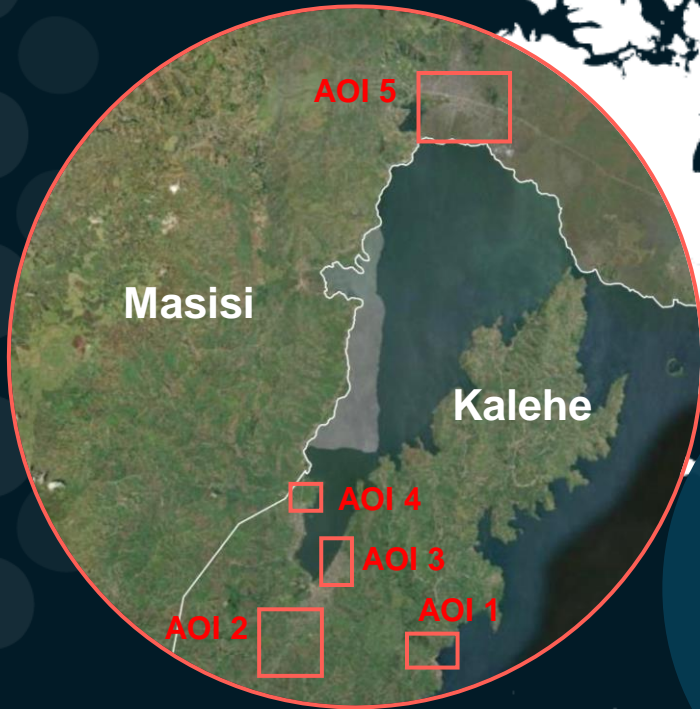
 Status: flood water detected

 Further action(s): continue monitoring



# DR. of the CONGO

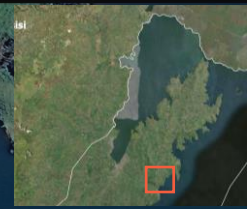
11 May 2023





# AOI 1: Gasunyu Village, Kalehe Territory, Sud-Kivu Province

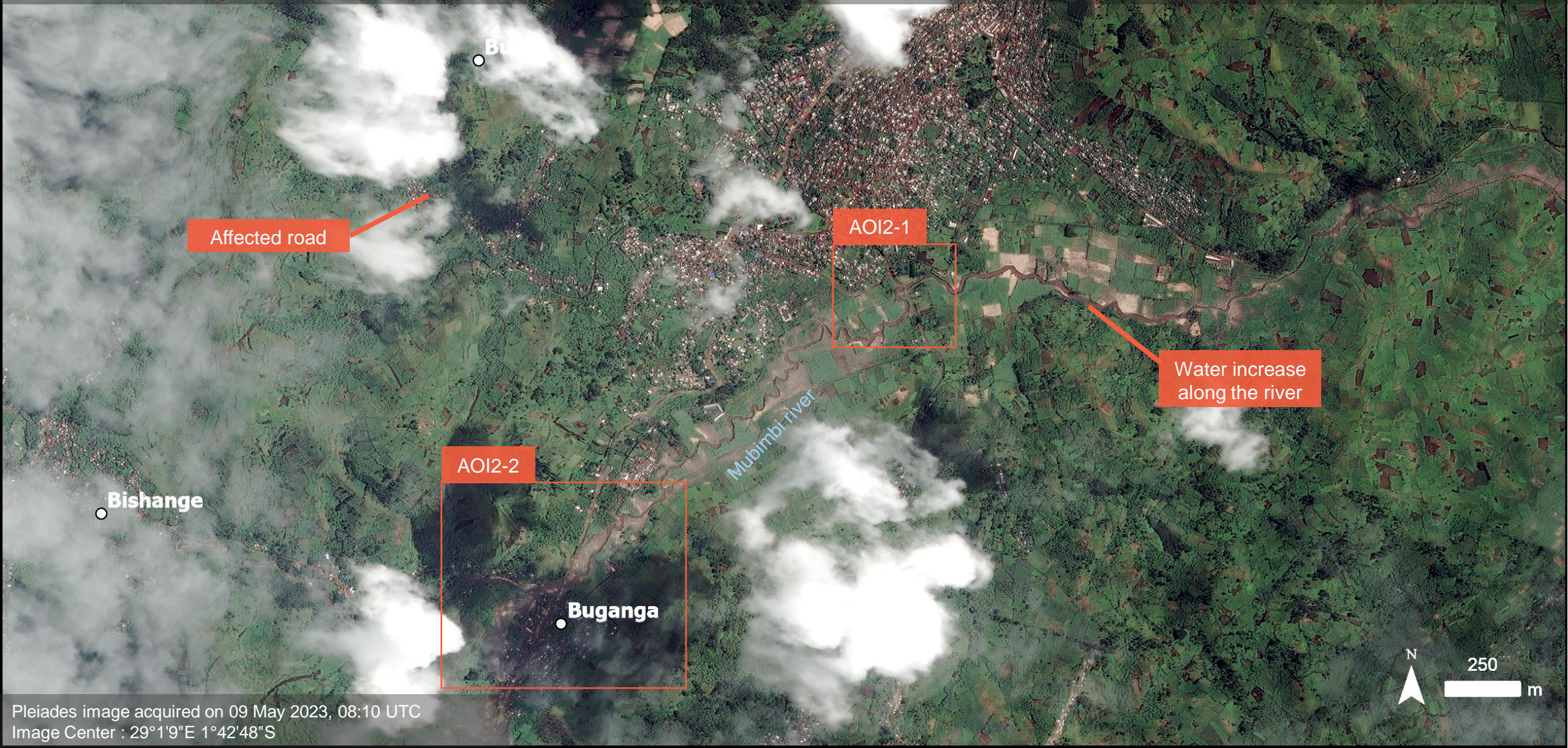
Increased water along the Mubimbi River





# AOI 2: Minova and Buganga Villages, Kalehe Territory, Sud-Kivu Province

Increased water along the Mubimbi River





# AOI 2 – 1: Minova Village, Kalehe Territory, Sud-Kivu Province

Mudslide and washed away area along the river

Image center:  
29°0'53"E  
1°43'11"S



ESRI Basemap



Pleiades / 10 May 2023



# AOI 2 – 2: Buganga Village Kalehe Territory, Sud-Kivu Province

Mudslide/washed away area along the river, affected road and potentially flooded buildings

Image center:  
29°0'36"E  
1°43'37"S



ESRI Basemap



Pleiades / 10 May 2023



# AOI 3 : Butonda Town, Kalehe Territory, Sud-Kivu Province

Increase of water level

Image center:  
29°1'22"E  
1°42'16"S



ESRI Basemap



Pleiades / 10 May 2023



# AOI 4: Bweremana Village, Kalehe Territory, Sud-Kivu Province

Mudslide/washed away area and potentially affected road

Image center:  
29°0'56"E  
1°40'39"S



ESRI Basemap



Pleiades / 10 May 2023



# AOI 5: Sake Town, Masisi Territory, Nord-Kivu Province

Mudslide and potentially affected road



Landslide

Potentially  
affected road

Landslide



250

m



# SUMMARY OF FINDINGS

---

- Affected roads and potentially affected structures observed in Gasunyu and Buganga Villages, Kalehe Territory, Sud-Kivu Province as of 10 May 2023;
- Mudslides and increase of river water level in Gasunyu, Minova, Buganga and Bweremana Villages Kalehe Territory, Sud-Kivu Province as of 10 May 2023;
- Landslide and potentially affected road observed in Sake Town, Masisi Territory, Nord-Kivu Province as of 10 May 2023;
- Increase of water level along the Lake Kivu shoreline observed as of 10 May 2023.



# COPYRIGHTS & SOURCES

---

## Data sources:

(1) Satellite Image (Post-event): Pleiades

Acquisition date : 10 May 2023

Resolution: 50cm

Copyright: Includes material © AIRBUS DS (2023)

Source: CNES

(2) Satellite Image (Pre-event): ESRI Basemap

## (3) Ancillary data

Administrative boundaries: UNOCHA

Populated place: OpenStreetMap

Waterway: OpenStreetMap

Road data: OpenStreetMap

Analysis: United Nations Satellite Centre (UNOSAT)

Production: United Nations Satellite Centre (UNOSAT)



 **@UNOSAT**

 **@UNITAR.unosat**

 **/UNOSAT**



**UNOSAT**, United Nations Institute for Training  
and Research (UNITAR)  
7 bis, Avenue de la Paix, CH-1202 Geneva 2,  
Switzerland

T +41 22 917 4720  
E [unosat@unitar.org](mailto:unosat@unitar.org)  
[www.unosat.org](http://www.unosat.org)