

5 May 2023




# PRELIMINARY SATELLITE- FLOOD ASSESSMENT REPORT

Nyabarongo River, Western, Northern, Southern Provinces and Kigali City, Rwanda



 Status: Flooded areas observed

 Further action(s): continue monitoring



# RWANDA

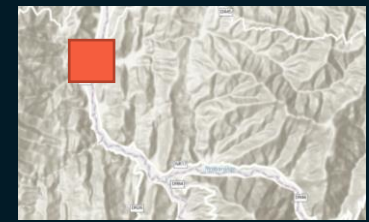




# AOI 1 – 1: VUNGA VILLAGE, NYABIHU DISTRICT, WESTERN PROVINCE, RWANDA

Increased water and washed away area along the Nyabarongo River

Image center:  
1°41'36.6"S  
29°37'58.9"E

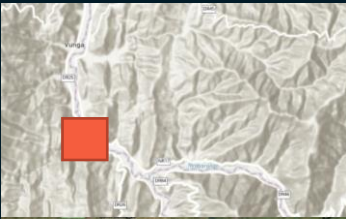




# AOI 1 – 2: NYABIHU DISTRICT, WESTERN PROVINCE, RWANDA

Increased water and flooded road along the Nyabarongo River

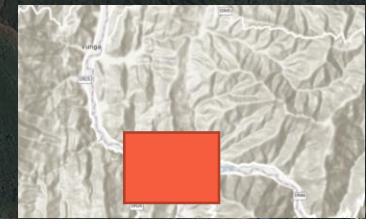
Image center:  
1°43'18.0"S  
29°38'14.1"E





# AOI 1-3: RIVER MEETING POINT BETWEEN NORTHERN, WESTERN AND SOUTHERN PROVINCES, RWANDA

Washed away area along the Nyabarongo River



UNOSAT  
United Nations  
Satellite Centre



125  
m

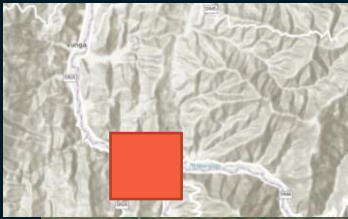
Pleades image acquired on 5 May 2023, 08:41 UTC  
Image Center: 1°44'03.0"S 29°39'29.7"E



# AOI 1-3: NYABARONGO RIVER MEETING POINT BETWEEN NORTHERN, WESTERN AND SOUTHERN PROVINCES, RWANDA

Increased water and washed away area along the Nyabarongo River

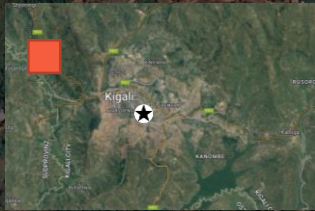
Image center:  
1°44'03.0"S  
29°39'29.7"E





# AOI 2-1: NYABARONGO RIVER, RULINDO DISTRICT, NORTHERN PROVINCE, KAMONYI DISTRICT SOUTHERN PROVINCES, RWANDA

Overflow of river and affected roads



Shyorogni

N

125

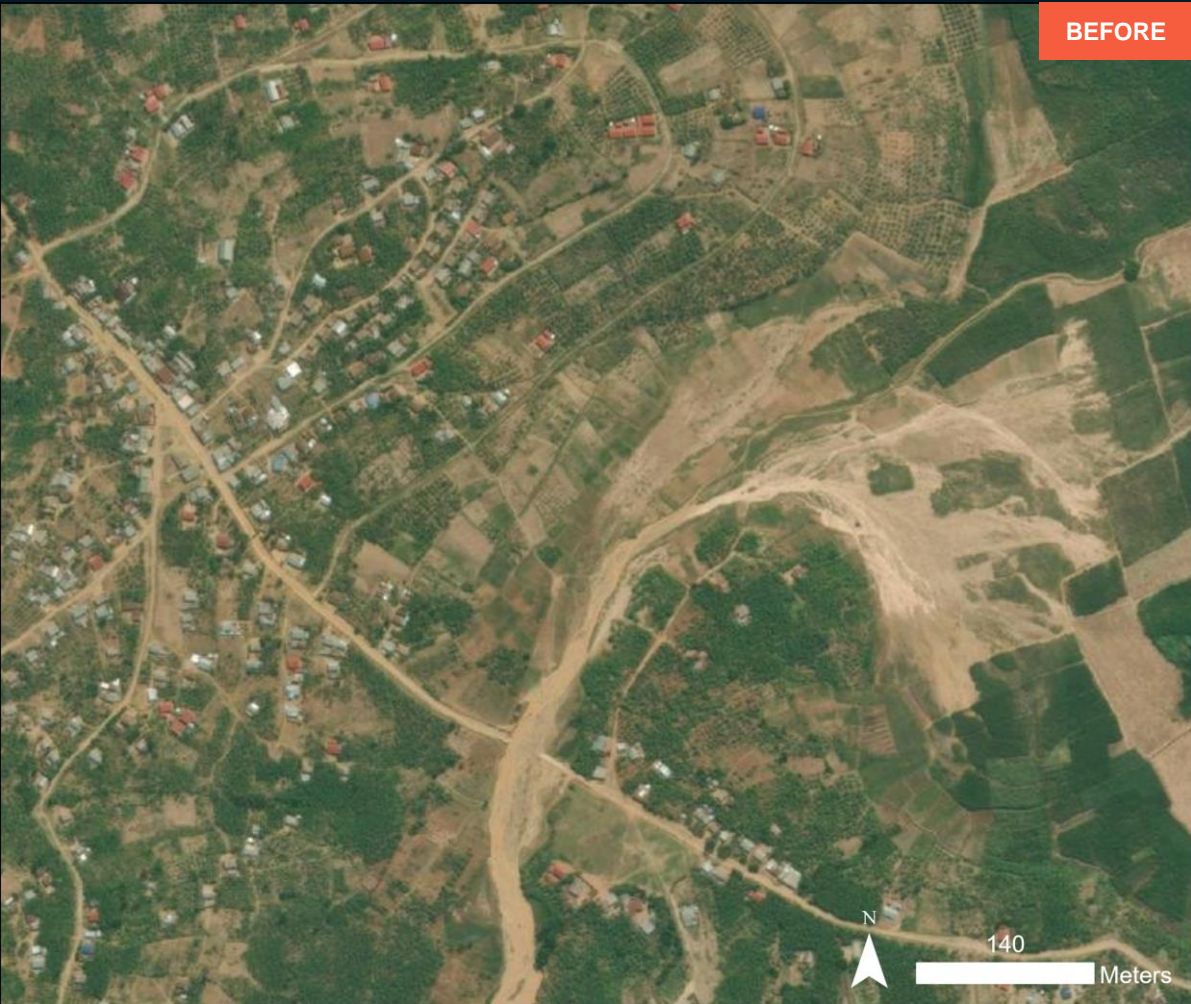
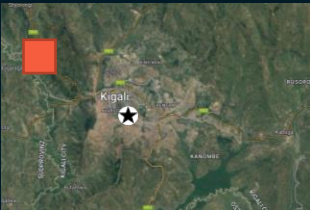
m



# AOI 2-1 : NYABARONGO RIVER, RULINDO DISTRICT, NORTHERN PROVINCE, KAMONYI DISTRICT SOUTHERN PROVINCES, RWANDA

Overflow of river and affected roads

Image center:  
1°53'34.3"S  
29°57'11.1"E





# AOI 2-2: NYABARONGO RIVER, RULINDO DISTRICT, NORTHERN PROVINCE, KAMONYI DISTRICT SOUTHERN PROVINCES, RWANDA

Flooded areas along the Nyabarongo River



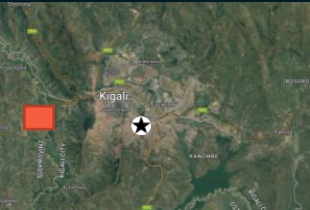
Pleades image acquired on 5 May 2023, 08:41 UTC  
Image Center : 1°54'17.0"S 29°57'58.2"E



# AOI 3: NYABUGOGO, NYARUGENGE DISTRICT, KIGALI CITY, RWANDA,

Potentially flooded areas and affected road

Image center:  
1°57'40.5"S  
30°00'54.1"E





# SUMMARY OF FINDINGS

---

- Increased water and washed away area observed along the Nyabarongo River, Nyabihu District, Western Province, Rwanda, as of 5 May 2023;
- Overflowed river and affected roads observed along the Nyabarongo River, Rulindo District, Northern Province and Kamonyi District, Southern Provinces, Rwanda as of 5 May 2023;
- Potentially flooded areas and affected roads observed in Nyabugogo, Nyarugenge District, Kigali City, Rwanda as of 5 May 2023.

*NOTE: This is a preliminary analysis and has not yet been validated in the field.*



# COPYRIGHTS AND SOURCES

## Data sources:

### (1) Satellite Images (Post-event)

Satellite Data : Pleiades

Imagery Date : 5 May 2023

Resolution : 50 cm

Copyright : CNES (2023), distribution Airbus D&S

Source : Airbus DS

### (2) Satellite Images (Pre-event)

ESRI Basemap

### (3) Ancillary data

Administrative boundaries: National Institute of Statistics of Rwanda (NISR)

Analysis: United Nations Satellite Centre (UNOSAT)

Production: United Nations Satellite Centre (UNOSAT)



 **@UNOSAT**

 **@UNITAR.unosat**