

The impact of Tropical Cyclone Judy on Solomon's Tikopia Island, Feb. 27-Mar. 7, 2023

Activation-806 (Call-928)



Satellite-Derived Damage Observation



AOI-1

Cyclone Judy



State Key Laboratory of Satellite Ocean Environment
Dynamics, Second Institute of Oceanography, MNR, China

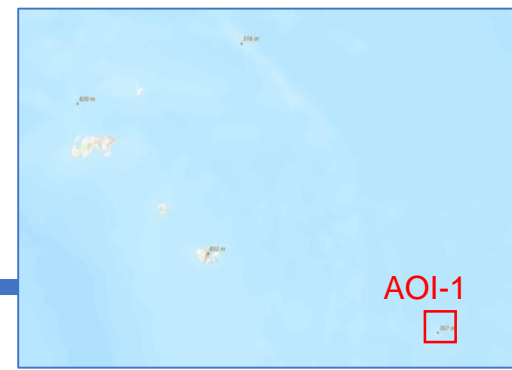


China Center for Resource Satellite
Data and Applications, CASC, China



AOI-1

Vegetation damage on the Tikopia Island



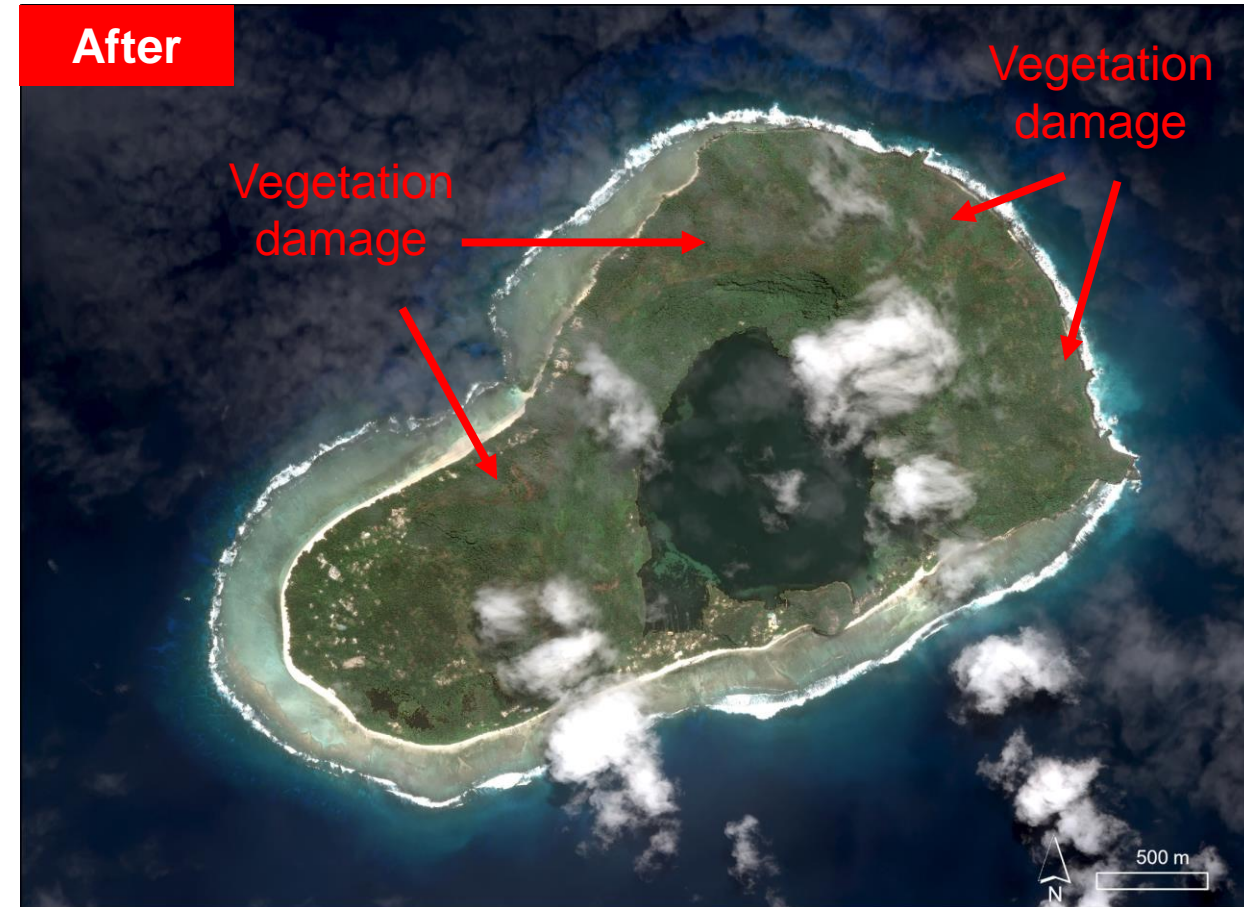
AOI-1

The rain caused by Cyclone Judy resulted in the destruction of vegetation significantly.

Before



After



Sentinel-2 / 14 Dec. 2022

Pleiades / 6 Mar. 2023



I
West of the AOI-1



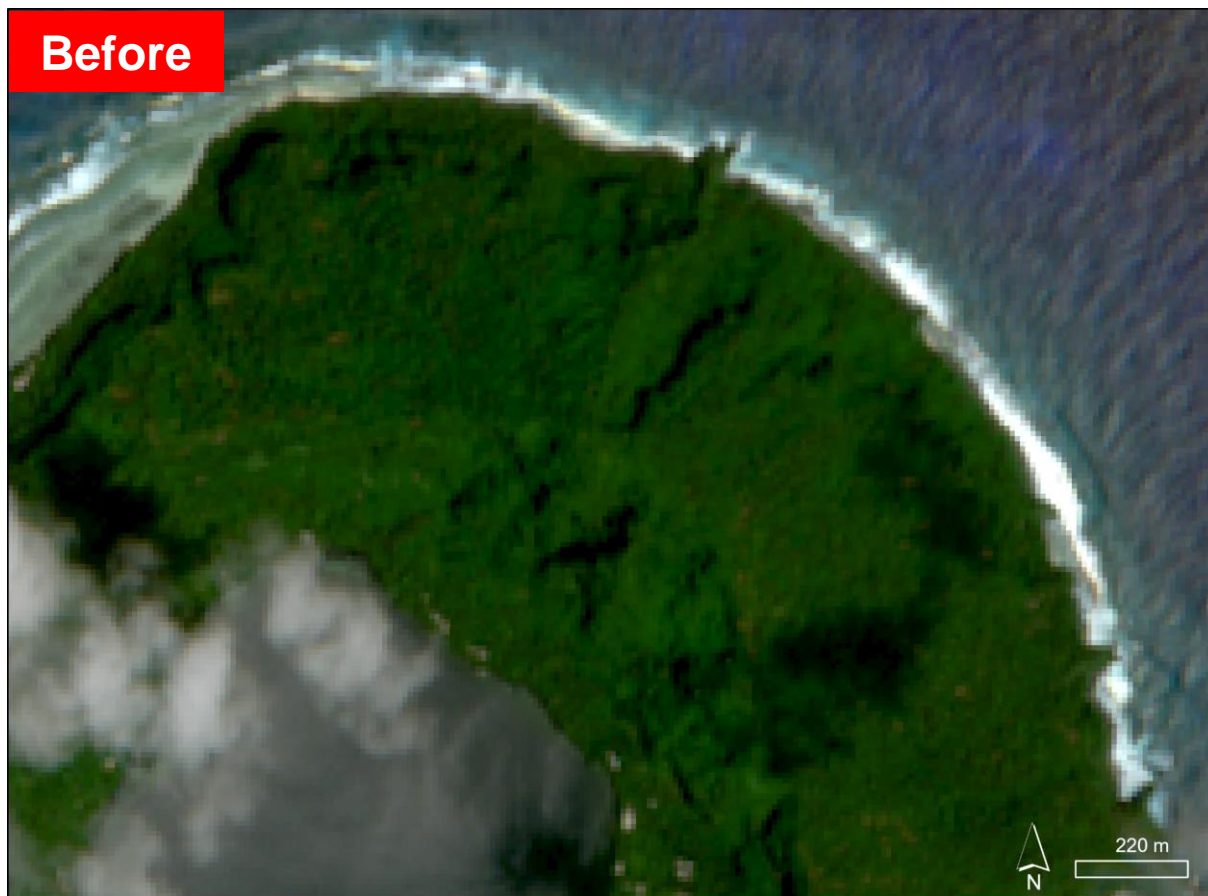
Sentinel-2 / 17 Feb. 2022



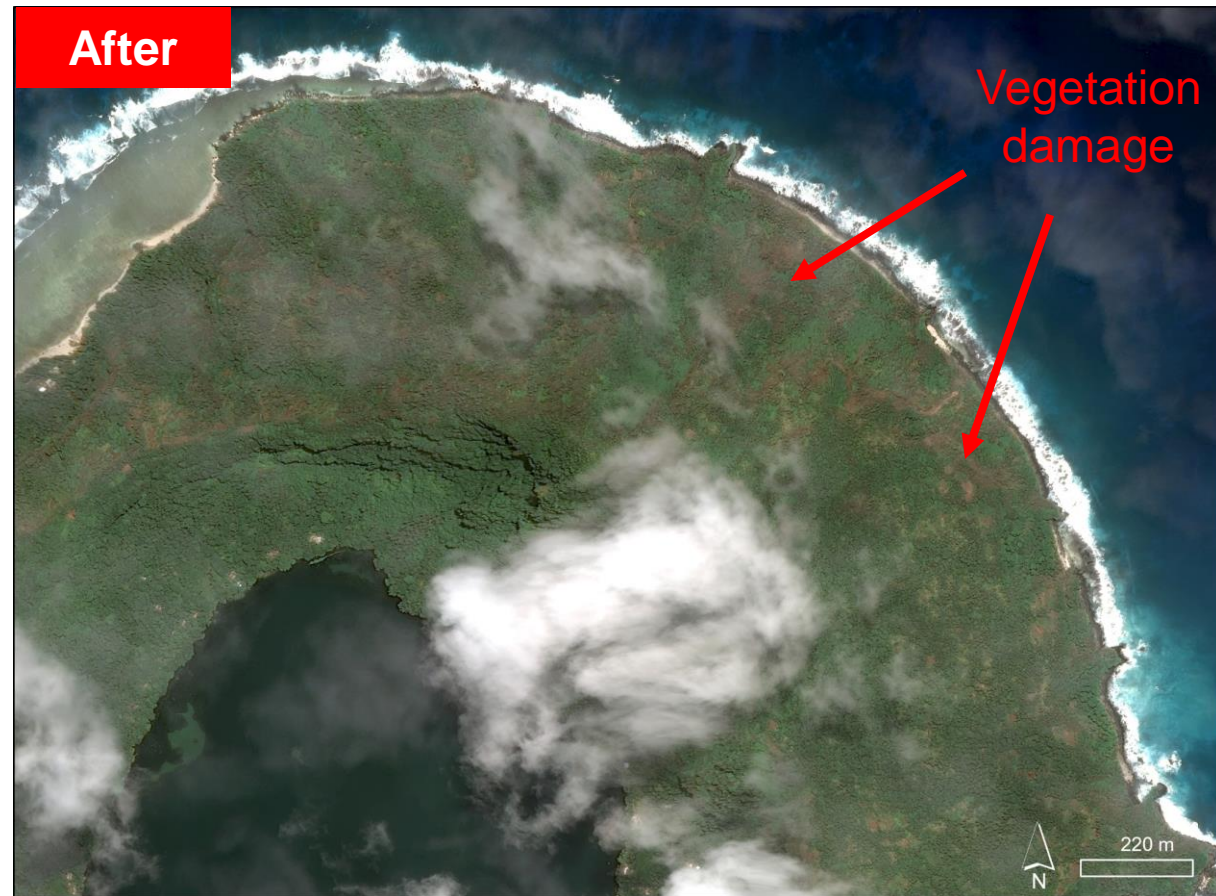
Pleiades / 6 Mar. 2023



II East of the AOI-1



Sentinel-2 / 19 Dec. 2022



Pleiades / 6 Mar. 2023



COPYRIGHTS AND SOURCES

Data sources:

(1) Satellite Image (Post-event):

Sentinel-2: 14 Dec. 2022; 17 Feb. 2022; 19 Dec. 2022

Resolution: 10 m

Copyright: @ European Space Agency

(2) Satellite Image (Pre-event):

Pleiades: 6 Mar. 2023

Resolution: 0.5 m

Copyright: @ Centre National D'Etudes Spatiales (CNES)

Spatial Reference:

Name: WGS 1984 UTM Zone 59S

PCS: WGS 1984 UTM Zone 59S

GCS: GCS WGS 1984

Datum: WGS 1984

This report is funded by the joint scientific research project “*Capacity building on uses of satellite remote sensing for monitoring marine and coastal ecosystems in Pacific island countries*” (Project No. 2021YFE0117600) from the Ministry of Science and Technology of the People’s Republic of China.