

# SYRIAN ARAB REPUBLIC

Cultural Site: Cyrrhus, Theatre

IMAGERY ANALYSIS: 11/02/2023 PUBLISHED 16/02/2023 V1.

ANALYZED  
AREA  
3 km<sup>2</sup>



POSSIBLE  
DAMAGED

AFTER

9.55 m

USGS / WorldView-2 / 11 February 2023

BEFORE

9.6 m

USGS / WorldView-1 / 30 August 2022



EARTHQUAKE  
EQ20230206SYR



**Damage Assessment for  
Cyrrhus, Afrin District,  
Aleppo Governorate, Syrian  
Arab Republic as of 11  
February 2023**

This map illustrates potential damaged over the cultural site Cyrrhus, by the 6 February 2023 earthquake, as detected by a WorldView-2 very high-resolution satellite image acquired on 11 February 2023. In a preliminary analysis, UNOSAT has detected possible and moderate damage over several monuments in the archaeological site.

This is a preliminary analysis and has not yet been validated in the field. Please send ground feedback to United Nations Satellite Centre (UNOSAT).

## Legend

- Possible damage
- Site area



unesco

Spatial Reference  
Name: WGS 1984 UTM Zone 37N  
PCS: WGS 1984 UTM Zone 37N  
GCS: GCS WGS 1984

Satellite Data (Post): WorldView-2  
Imagery Dates : 11 February 2023  
Resolution: 50 cm  
Copyright: 2023 DigitalGlobe Inc.  
Source: USGS

Earthquake epicentre: USGS  
Seismic intensity scales : USGS  
Administrative boundaries: United Nations Cartographic Section  
(UNCS) and United Nations Office for the Coordination of  
Humanitarian Affairs (UNOCHA), HDX

Analysis: United Nations Satellite Centre (UNOSAT)  
Production: United Nations Satellite Centre (UNOSAT)



Map scale for A3: 1:6,000  
0 5 10 20 Metres



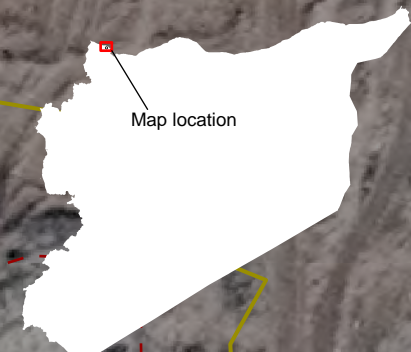
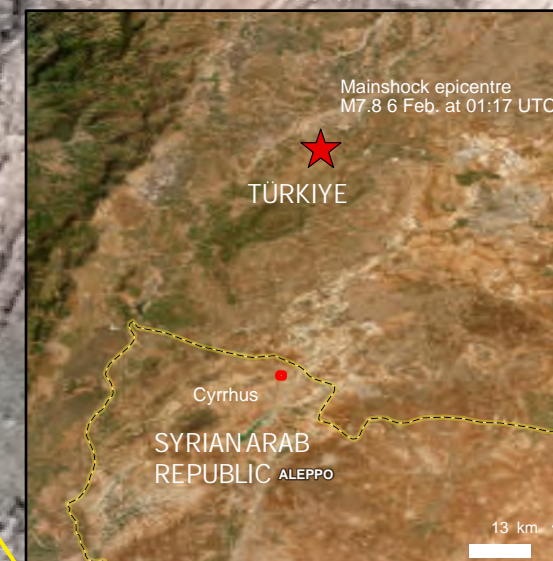
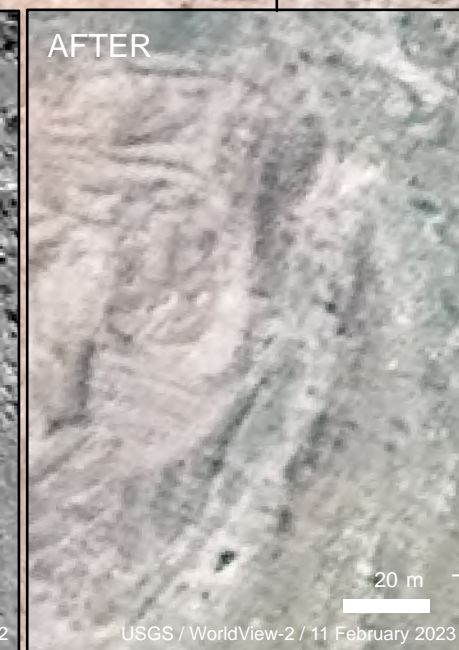
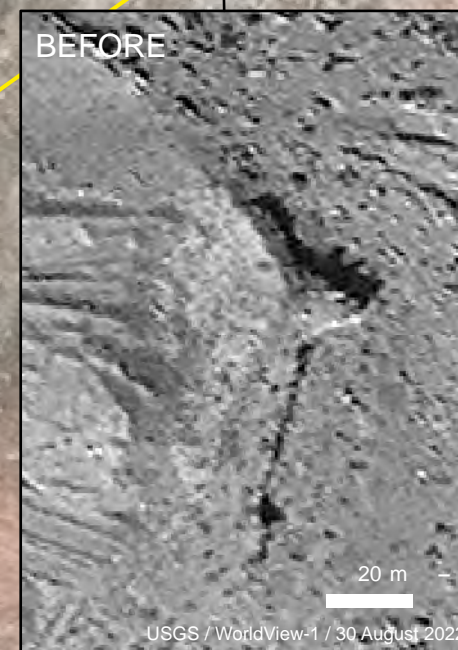
# SYRIAN ARAB REPUBLIC

Cultural Site: Cyrrhus, Citadel Perimeter

IMAGERY ANALYSIS: 11/02/2023 PUBLISHED 16/02/2023 V1.

ANALYZED  
AREA  
3.5 km<sup>2</sup>

MODERATE  
DAMAGED





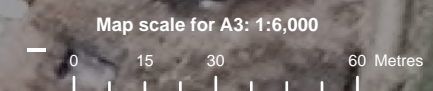
**Damage Assessment for  
Cyrrhus, Afrin District,  
Aleppo Governorate, Syrian  
Arab Republic as of 11  
February 2023**

This map illustrates potential damaged over the cultural site Cyrrhus, by the 6 February 2023 earthquake, as detected by a WorldView-2 very high-resolution satellite image acquired on 11 February 2023. In a preliminary analysis, UNOSAT has detected possible and moderate damage over several monuments over the archaeological site.

This is a preliminary analysis and has not yet been validated in the field. Please send ground feedback to United Nations Satellite Centre (UNOSAT).

## Legend

-  Possible damage
-  Site area



Spatial Reference  
Name: WGS 1984 UTM Zone 37N  
PCS: WGS 1984 UTM Zone 37N  
GCS: GCS WGS 1984

Satellite Data (Post): WorldView-2  
Imagery Dates : 11 February 2023  
Resolution: 50 cm  
Copyright: 2023 DigitalGlobe Inc.  
Source: USGS

Earthquake epicentre: USGS  
Seismic intensity scales : USGS  
Administrative boundaries: United Nations Cartographic Section  
(UNCS) and United Nations Office for the Coordination of  
Humanitarian Affairs (UNOCHA), HDX

Analysis: United Nations Satellite Centre (UNOSAT)  
Production: United Nations Satellite Centre (UNOSAT)



36°44'30"N

36°57'15"E

36°57'30"E