

SYRIAN ARAB REPUBLIC

UNESCO Tentative List: Tartous - Amrit

IMAGERY ANALYSIS: 09/02/2023 PUBLISHED 13/02/2023 V1.

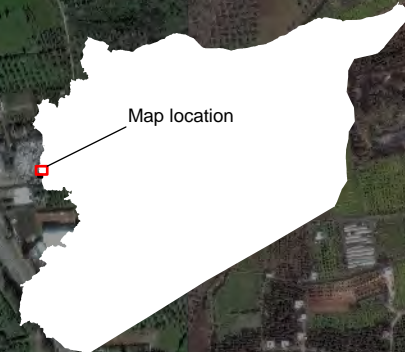
ANALYZED
AREA
3.5 km²



NO VISIBLE
DAMAGED



 **EARTHQUAKE**
EQ20230206SYR



**Damage Assessment for
Tartous - Amrit, Tartous
District, Tartous Governate,
Syrian Arab republic as of 9
February 2023**

This map illustrates potential damaged over the UNESCO Tentative Site Tartous (Tartous: the Citadel of the Crusaders) by the 6 February 2023 earthquake, as detected by a WorldView-2 very high-resolution satellite image acquired on 9 February 2023. In a preliminary analysis, UNOSAT has detected no visible damage on the archaeological site or the buildings.

This is a preliminary analysis and has not yet been validated in the field. Please send ground feedback to United Nations Satellite Centre (UNOSAT).

Legend

- Site features
- Area of interest
- Possible damage



Spatial Reference
Name: WGS 1984 UTM Zone 36N
PCS: WGS 1984 UTM Zone 36N
GCS: GCS WGS 1984

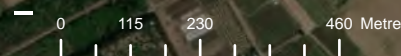
Satellite Data (Post): WorldView-2
Imagery Dates : 9 February 2023
Resolution: 50 cm
Copyright: 2023 DigitalGlobe Inc.
Source: USGS

Earthquake epicentre: USGS
Seismic intensity scales : USGS
Administrative boundaries: United Nations Cartographic Section
(UNCS) and United Nations Office for the Coordination of
Humanitarian Affairs (UNOCHA), HDX

Analysis: United Nations Satellite Centre (UNOSAT)
Production: United Nations Satellite Centre (UNOSAT)



Map scale for A3: 1:6,000



35°51'15"E

35°51'30"E

35°51'45"E

SYRIAN ARAB REPUBLIC

UNESCO Tentative List: Tartous - Arwad

IMAGERY ANALYSIS: 09/02/2023 PUBLISHED 13/02/2023 V1.

ANALYZED
AREA
1 km²

POSSIBLE
DAMAGED



Damage Assessment for Tartous - Arwad, Tartous District, Tartous Governate, Syrian Arab republic as of 9 February 2023

This map illustrates potential damaged over the UNESCO Tentative Site Tartous (Tartous: the Citadel of the Crusaders) by the 6 February 2023 earthquake, as detected by a WorldView-2 very high-resolution satellite image acquired on 9 February 2023. In a preliminary analysis, UNOSAT has detected possible damage to the Citadel of Arwad's northwest tower and possible damage to one side of the facade.

This is a preliminary analysis and has not yet been validated in the field. Please send ground feedback to United Nations Satellite Centre (UNOSAT).

- #### Legend
- Site features
 - Area of interest
 - Possible damage



Spatial Reference
Name: WGS 1984 UTM Zone 36N
PCS: WGS 1984 UTM Zone 36N
GCS: GCS WGS 1984

Satellite Data (Post): WorldView-2
Imagery Dates : 9 February 2023
Resolution: 50 cm
Copyright: 2023 DigitalGlobe Inc.
Source: USGS

Earthquake epicentre: USGS
Seismic intensity scales : USGS
Administrative boundaries: United Nations Cartographic Section (UNCS) and United Nations Office for the Coordination of Humanitarian Affairs (UNOCHA), HDX

Analysis: United Nations Satellite Centre (UNOSAT)
Production: United Nations Satellite Centre (UNOSAT)



Map scale for A3: 1:6,000

0 25 50 100 Metres

34°53'30"N