


23 November 2022




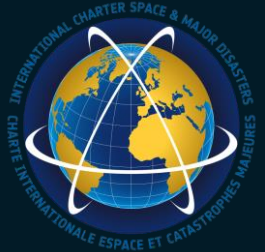
# PRELIMINARY SATELLITE-DERIVED DAMAGE ASSESSMENT INDONESIA EARTHQUAKE (21 November 2022, M 5.6)



Cianjur District, Jawa Barat Province, Indonesia

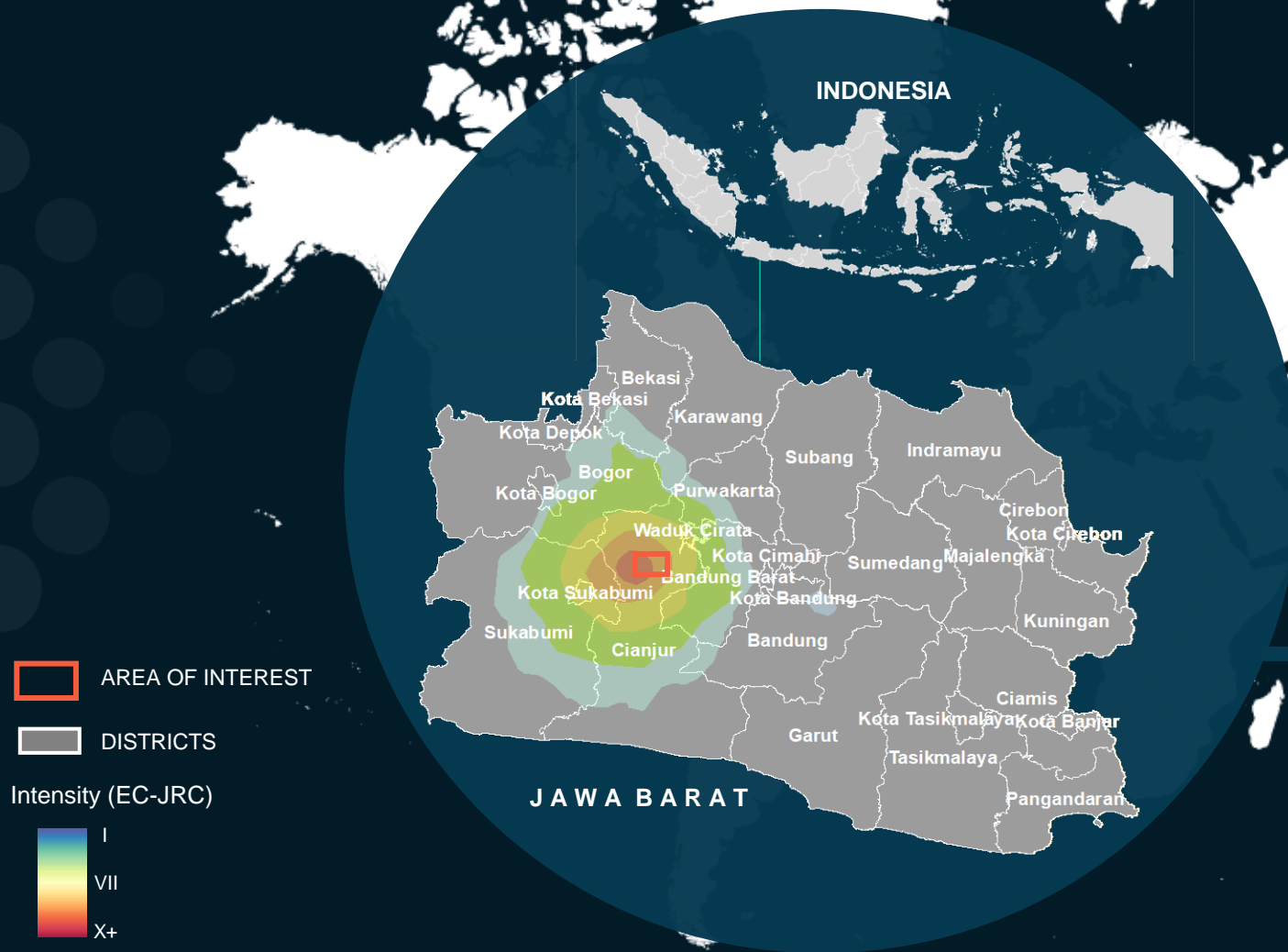
 Status: Potentially damaged structures observed.

 Further action(s): continue monitoring



# INDONESIA

23 November 2022



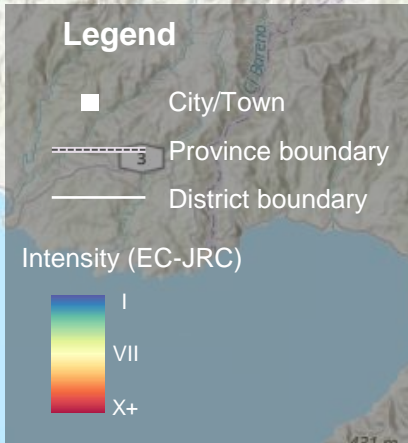




# EARTHQUAKE M 5.6 IN PHILIPPINES ON 21 NOVEMBER 2022



Map location



JAWA BARAT

Cianjur

Kota Sukanumi

Bandung Barat

~3,800,000

~2,600,000

~1,500,000

~640,000

~300,000



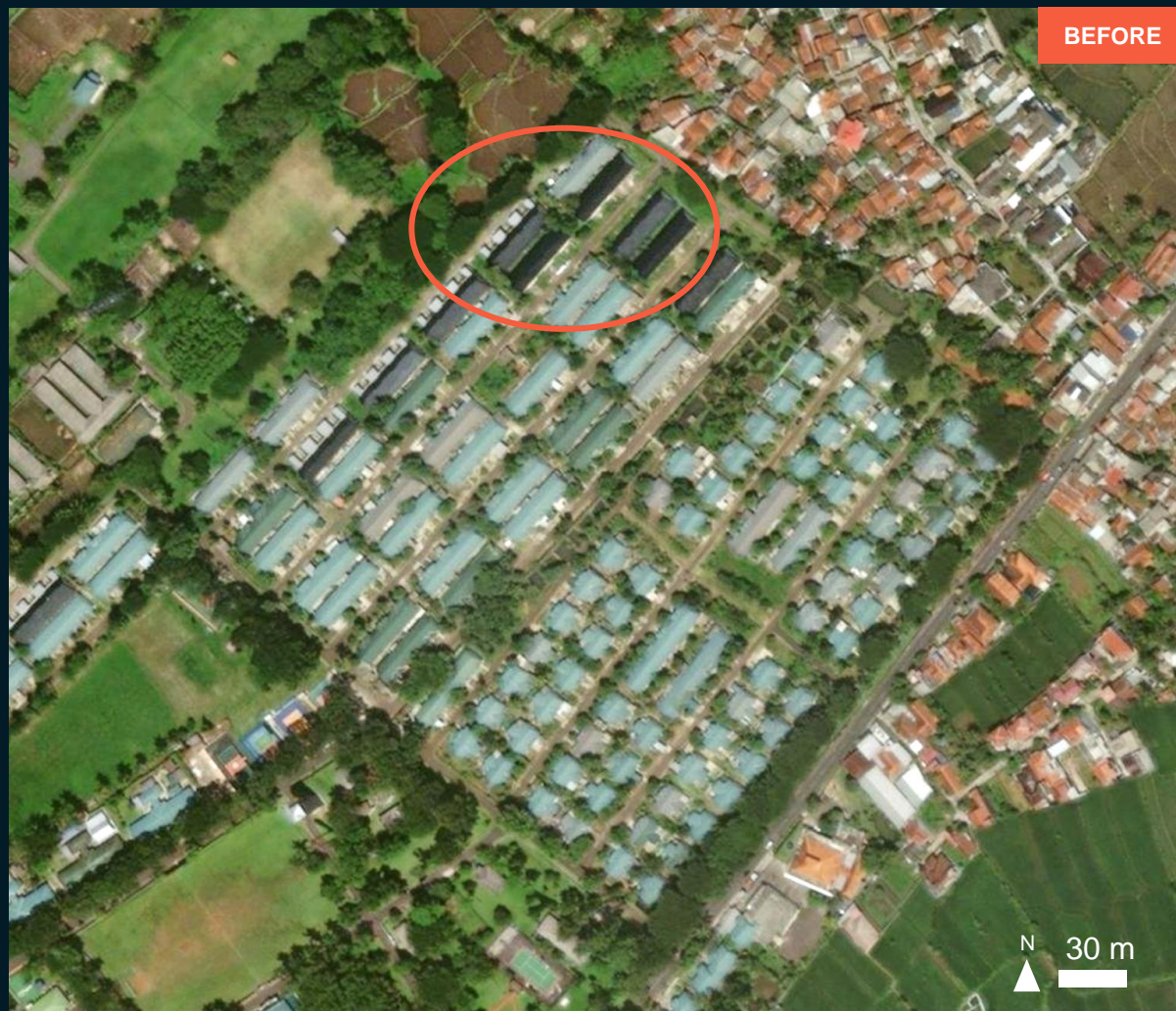
# AOI 1-1 KARANGTENGAH SUB DISTRICT, CIANJUR DISTRICT, JAWA BARAT PROVINCE

Potentially damaged structure

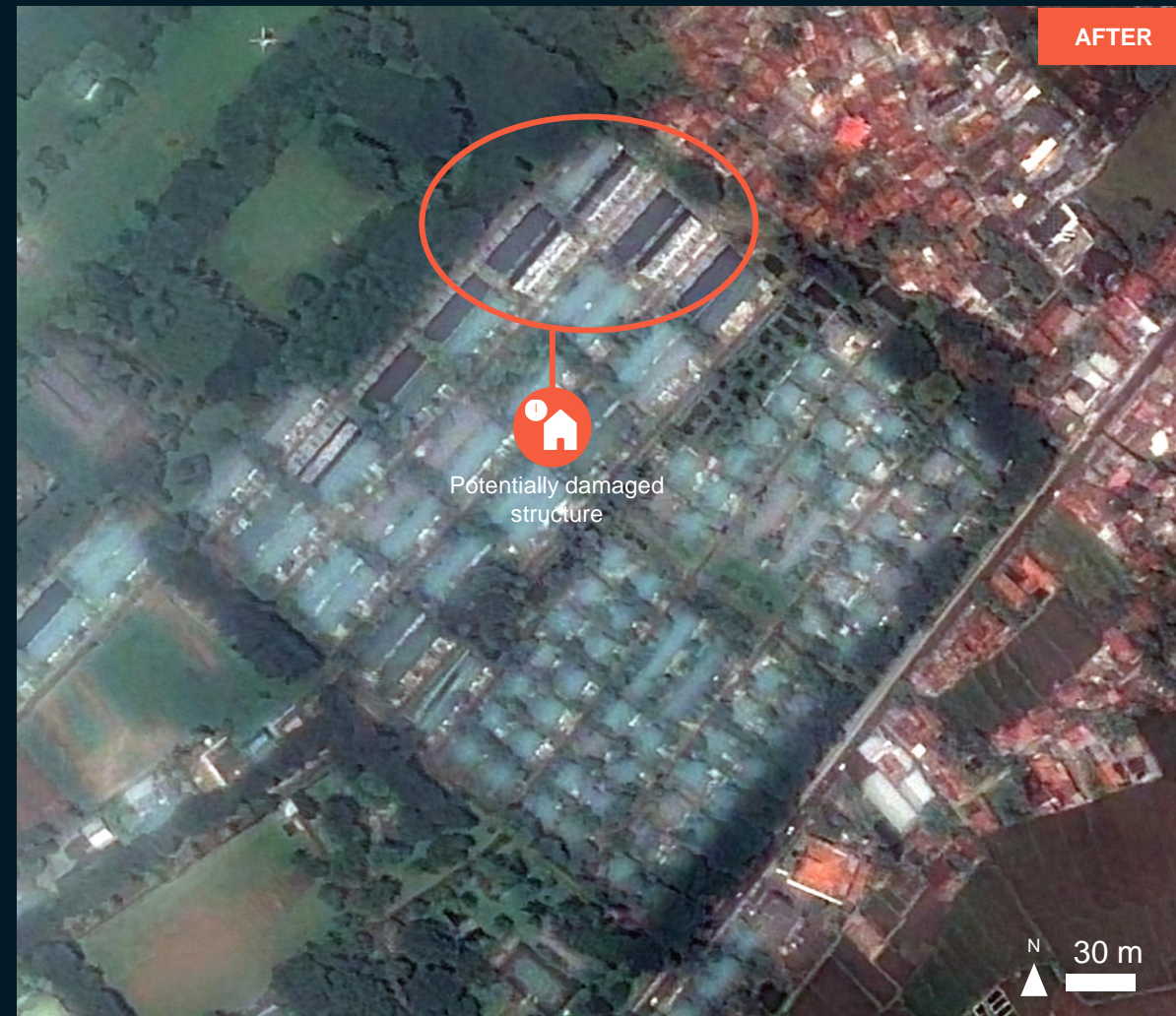
Image center:  
107°9'20.999"E  
6°48'7.569"S



Cianjur  
District



Worldview-2 / 27 November 2021



Pleiades / 23 November 2022



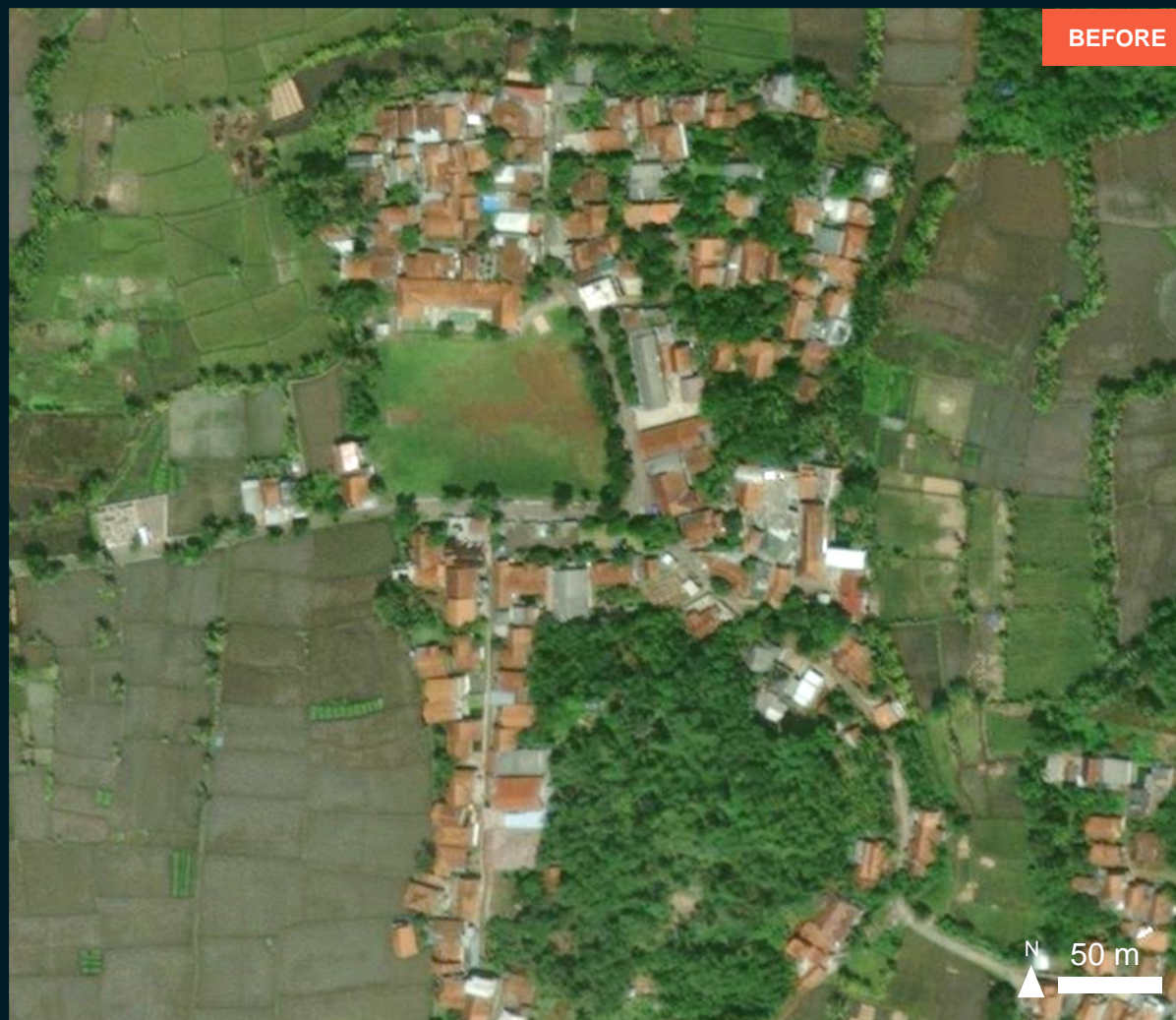
# AOI 1-2 SUKALUYU SUB-DISTRICT, CIANJUR DISTRICT, JAWA BARAT PROVINCE

Landslide and potentially affected structures

Image center:  
107°12'57.501"E  
6°50'2.747"S

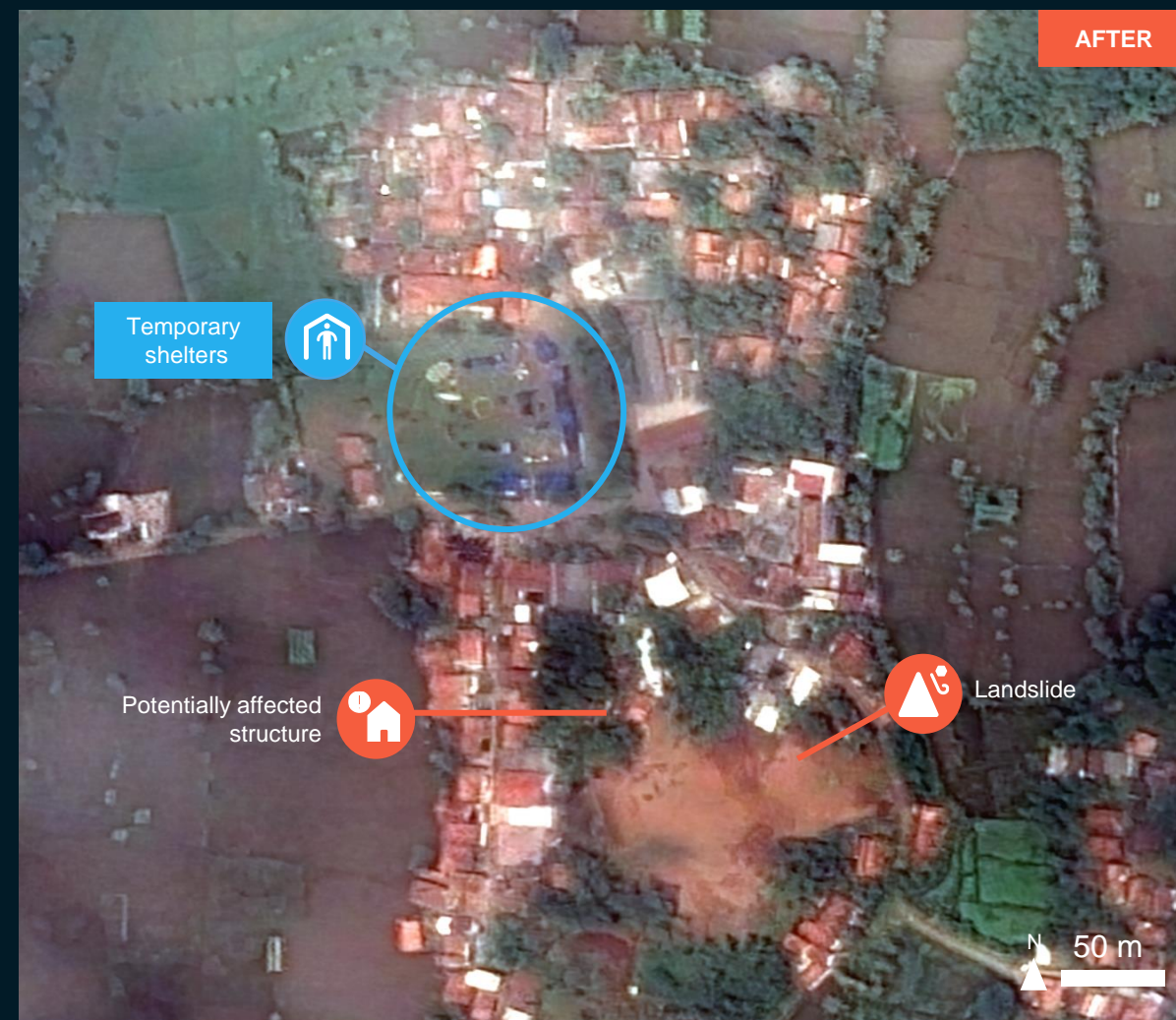


Cianjur  
District



BEFORE

Worldview-2 / 27 November 2021



AFTER

Pleiades / 23 November 2022



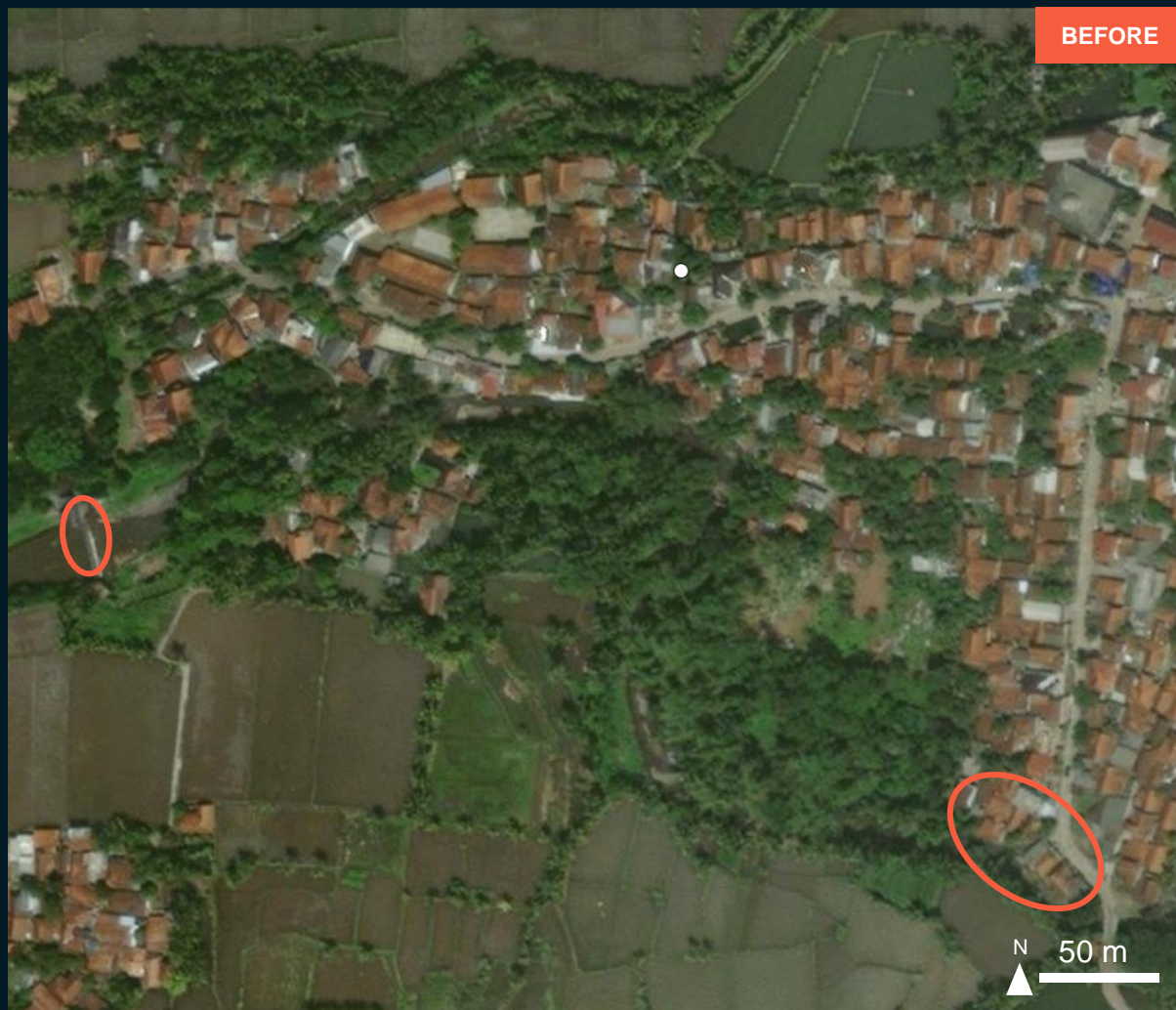
# AOI 1-3 CIANJUR AND CILAKU SUB-DISTRICTS, CIANJUR DISTRICT, JAWA BARAT PROVINCE

Mudslide and potentially affected structures

Image center:  
107°11'16.799"E  
6°50'16.949"S



Cianjur  
District



Worldview-2 / 27 November 2021



Pleiades / 23 November 2022



# AOI 1-4 CIANJUR AND CILAKU SUB-DISTRICTS, CIANJUR DISTRICT, JAWA BARAT PROVINCE

Image center:  
107°9'26.318"E  
6°50'26.13"S



Cianjur  
District



Mudslide and potentially affected structures



Worldview-2 / 27 November 2021



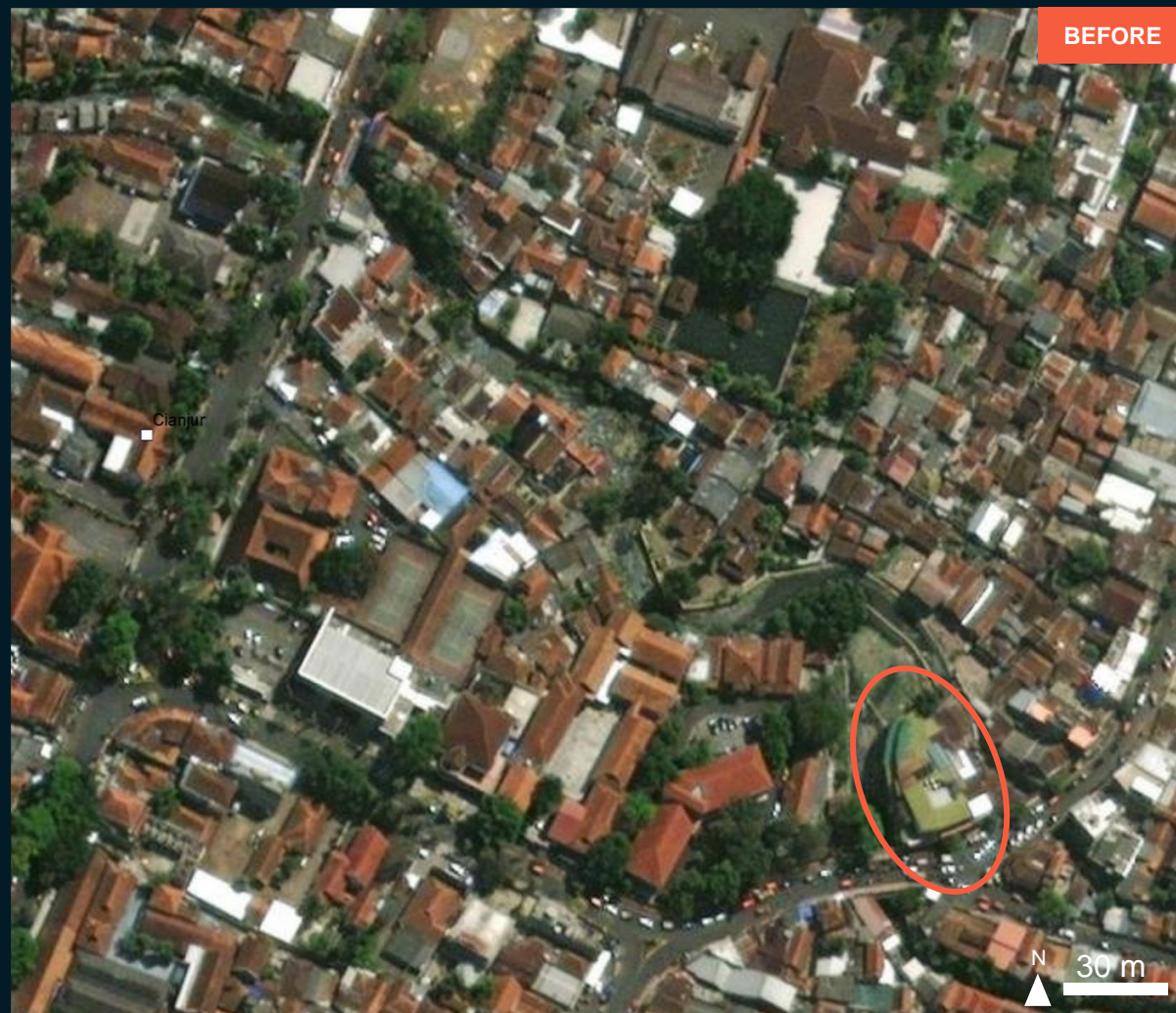
Pleiades / 23 November 2022



# AOI 1-5 CIANJUR TOWN, CIANJUR SUB-DISTRICTS, CIANJUR DISTRICT, JAWA BARAT PROVINCE

Mudslide and potentially affected structures

Image center:  
107°8'19.055"E  
6°49'25.971"S



Worldview-2 / 5 Sep 2020



Pleiades / 23 November 2022



# SUMMARY OF FINDINGS

---

- Based on seismic intensities (USGS) and population data (worldpop), about 1 million people were exposed to strong and very strong shaking in Jawa Barat Province, Indonesia;
- Potentially damaged structures and temporary shelters observed in Karangtengah & Sukaluyu Sub Districts, Cianjur District, Jawa Barat Province as of 23 November 2022;
- Landslide observed in Sukaluyu Sub-district, Cianjur District, Jawa Barat Province as of 23 November 2022;
- Landslides affected structures observed in Cianjur and Cilaku Sub-districts, Jawa Barat Province as of 23 November 2022.



# COPYRIGHTS AND SOURCES

---

## Data sources:

### (1) Satellite Image (Post-event)

Pleiades / 23 November 2022

Copyright : CNES (2022), distribution Airbus Defense and Space

Source : Airbus Defense and Space

### (2) Satellite Image (Pre-event)

Worldview-2 / 5 Sep 2020 and 27 November 2021

Copyright: 2020 Digital Globe and 2021 Digital Globe

Source: ESRI Basemap

### (3) Ancillary data

MMI intensities: EC-JRC

Administrative boundaries: Badan Pusat Statistik (BPS - Statistics Indonesia), HDX

Populated places: OpenStreetMap

Analysis: United Nations Satellite Centre (UNOSAT)

Production: United Nations Satellite Centre (UNOSAT)





**@UNOSAT**



**@UNITAR.unosat**



**UNOSAT**, United Nations Institute for Training  
and Research (UNITAR)  
7 bis, Avenue de la Paix, CH-1202 Geneva 2,  
Switzerland

T +41 22 917 4720  
E [unosat@unitar.org](mailto:unosat@unitar.org)  
[www.unosat.org](http://www.unosat.org)