


05 October 2022


# **TROPICAL CYCLONE NORU-22**

## **PRELIMINARY SATELLITE-DERIVED FLOOD AND DAMAGE ASSESSMENT**

Savannakhet City, Champhon Town and Mouang Nong,  
Savannakhet Province of Lao PDR



 Status: No observed major floods or widespread damage could

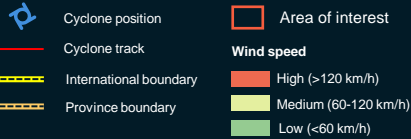
 Further action(s): Full assessment completed



**AIRBUS**



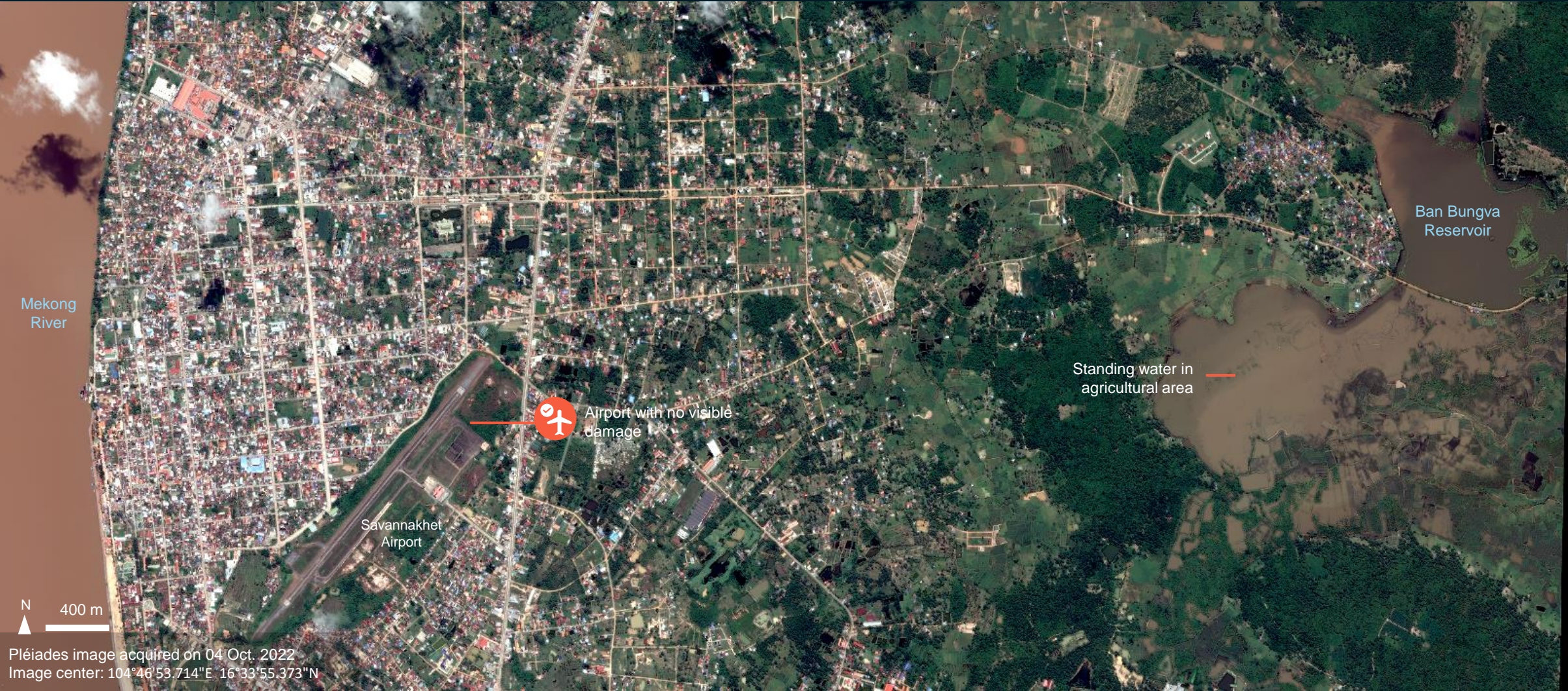
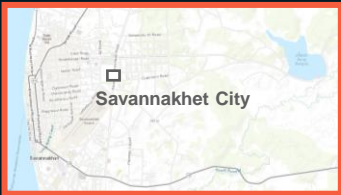
# LAO PDR





# AOI-1 SAVANNAKHET CITY, KHANTHABOULY DISTRICT, SAVANNAKHET PROVINCE

No visible floods/damage



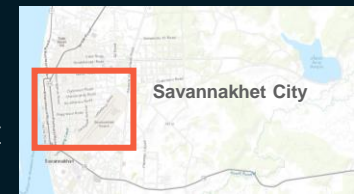


# AOI-1 SAVANNAKHET CITY, KHANTHABOULY DISTRICT, SAVANNAKHET PROVINCE

No visible floods/damage

Image center:

104°45'24.677"E  
16°33'26.005"N



Pléiades/ 7 Dec. 2022



Pléiades/ 04 Oct. 2022

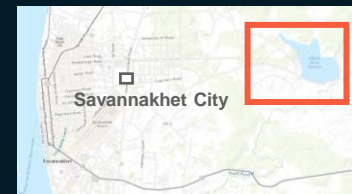


# AOI 1-SAVANNAKHET CITY, KHANTHABOULY DISTRICT, SAVANNAKHET PROVINCE

No visible floods/damage

Image center:

104°48'33.685"E  
16°34'1.813"N



WorldView-2/ 9 Mar. 2017

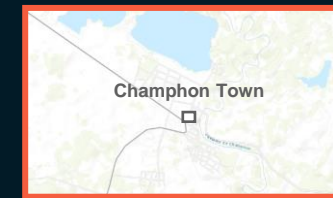


Pléiades/ 04 Oct. 2022



# AOI 2-CHAMPHON TOWN AND KENGKOK VILLAGE, CHAMPHON DISTRICT, SAVANNAKHET PROVINCE

No visible floods/damage



Pléiades image acquired on 04 Oct. 2022  
Image center: 105°11'21.585"E 16°26'52.23"N

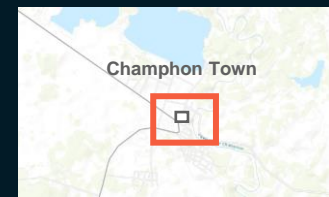


# AOI 2-SAVANNAKHET CITY, KHANTHABOULY DISTRICT, SAVANNAKHET PROVINCE

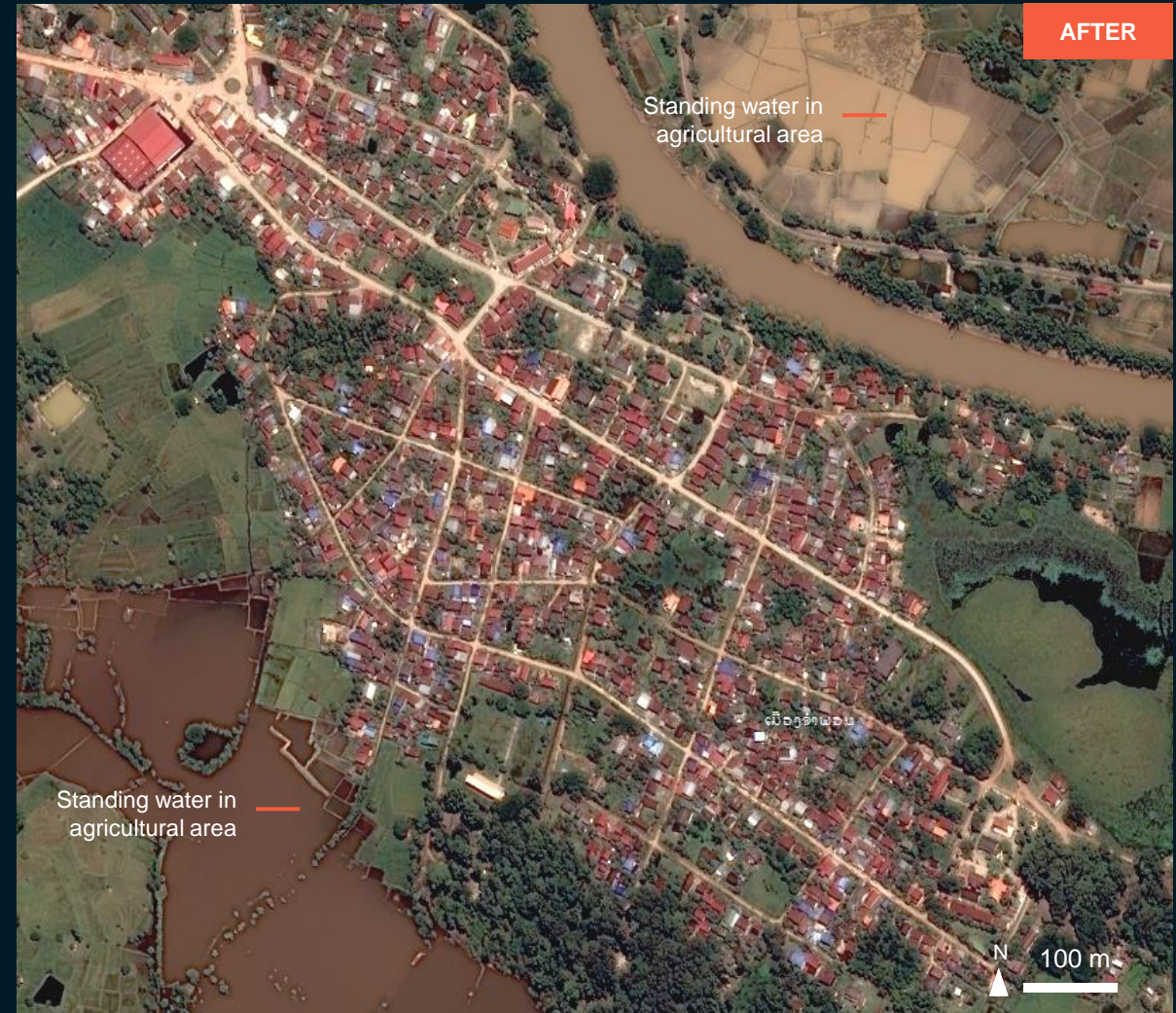
No visible floods/damage

Image center:

105°11'58.614"E  
16°26'34.521"N



WorldView-2/ 11 Feb. 2017



Pléiades/ 04 Oct. 2022



# AOI 3- MOUANG NONG, NONG DISTRICT, SAVANNAKHET PROVINCE

No visible floods/damage





# SUMMARY OF FINDING

---

- No major floods or widespread damage could be observed in Savannakhet City, Champhon Town, and Mouang Nong of Savannakhet Province;



# COPYRIGHTS AND SOURCES

## Data sources:

### (1) Satellite Image (Post-event)

Satellite Data : Pleiades  
Imagery Dates : 04 Sep. 2022 (03:30 UTC)  
Resolution: 50 cm  
Copyright: ©CNES (2022), Distribution Airbus DS.  
Source: Airbus DS

### (2) Satellite Image (Pre-event)

Satellite Data : Pléiades  
Imagery Dates : 7 Dec. 2022  
Resolution: 50 cm  
Copyright: ©CNES (2022), Distribution Airbus DS.  
Source: Airbus DS

Satellite Data : WorldView-2  
Imagery Dates : 9 Mar. 2017  
Copyright: 2017 Digital Globe  
Source: ESRI Basemap

## (3) Ancillary data

Cyclone track: Joint Research Centre (JRC)  
Analysis: United Nations Satellite Centre (UNOSAT)  
Production: United Nations Satellite Centre (UNOSAT)





**@UNOSAT**



**@UNITAR.unosat**



**UNOSAT**, United Nations Institute for Training  
and Research (UNITAR)  
7 bis, Avenue de la Paix, CH-1202 Geneva 2,  
Switzerland

T +41 022 917 4720  
E [unosat@unitar.org](mailto:unosat@unitar.org)  
[www.unosat.org](http://www.unosat.org)