


05 October 2022


TROPICAL CYCLONE NORU-22

PRELIMINARY SATELLITE-DERIVED FLOOD AND DAMAGE ASSESSMENT



Salavan, Pakse, and Attapue Cities of Lao PDR

 Status: No observed major floods or widespread damage

 Further action(s): Full assessment completed


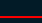





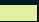


AIRBUS



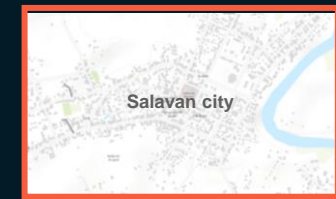
LAO PDR



-  Cyclone position
-  Cyclone track
-  International boundary
-  Province boundary
-  Area of interest
- Wind speed**
-  High (>120 km/h)
-  Medium (60-120 km/h)
-  Low (<60 km/h)

AOI-1 SALAVAN CITY, SARAVAN DISTRICT, SALAVAN PROVINCE

No visible floods/damage

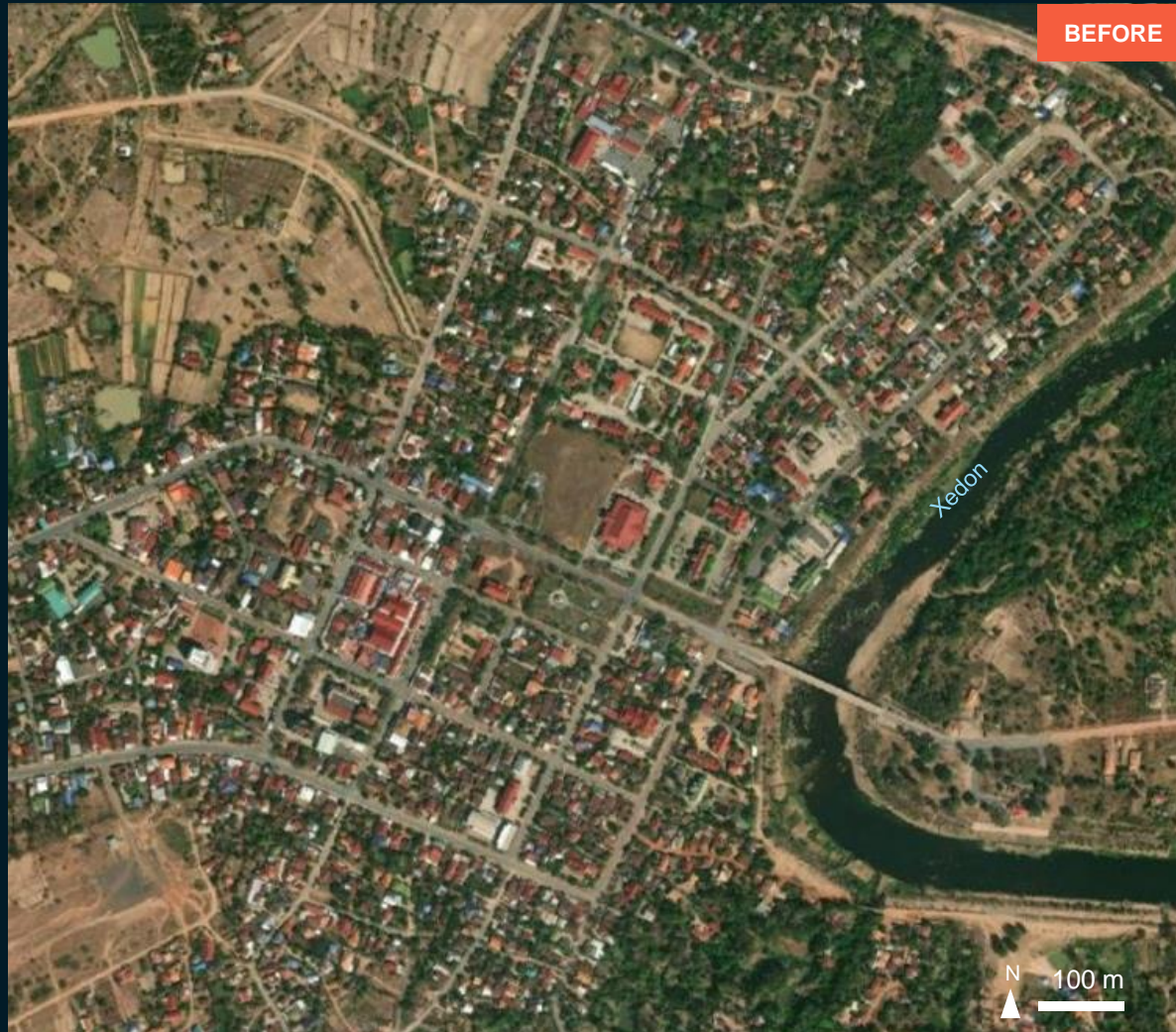
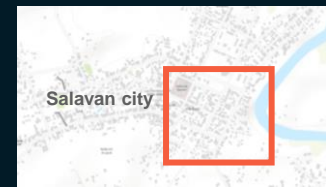


AOI-1 SALAVAN CITY, SARAVAN DISTRICT, SALAVAN PROVINCE

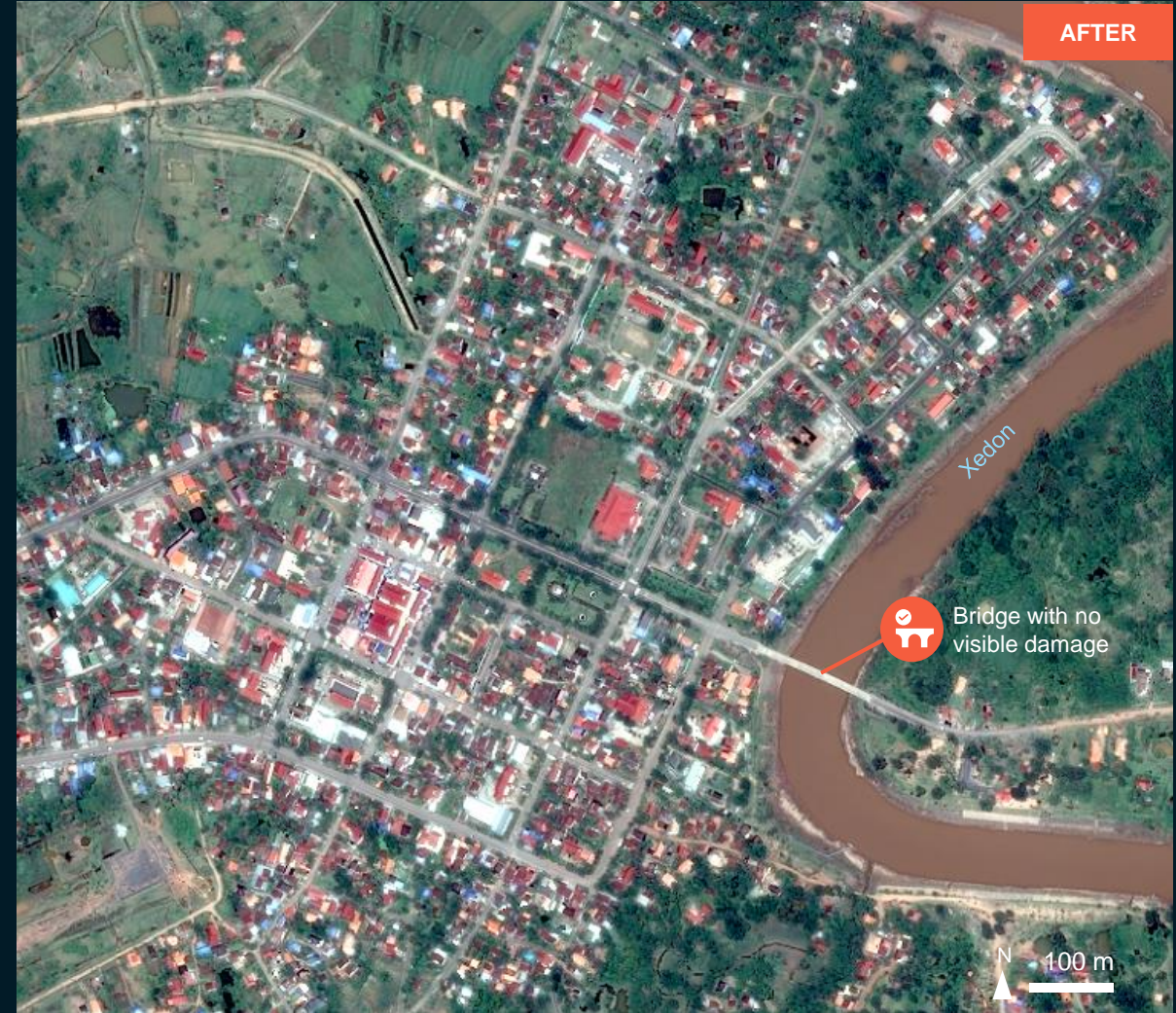
No visible floods/damage

Image center:

106°25'23.399"E
15°42'59.979"N



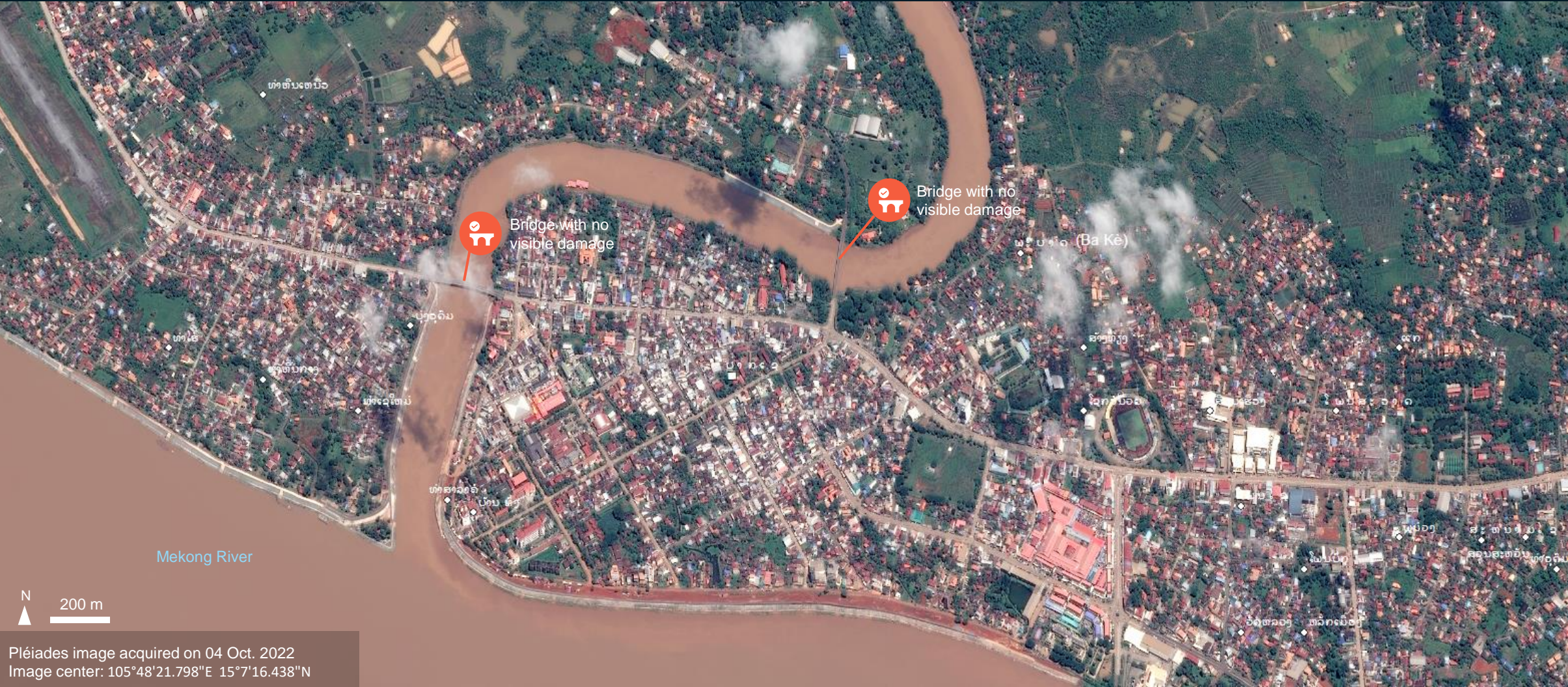
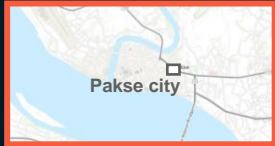
WorldView-2/ 10 Feb. 2022



Pléiades/ 04 Oct. 2022

AOI-2 PAKSE CITY, MUONG DISTRICT, CHAMPASAK PROVINCE

No visible floods/damage

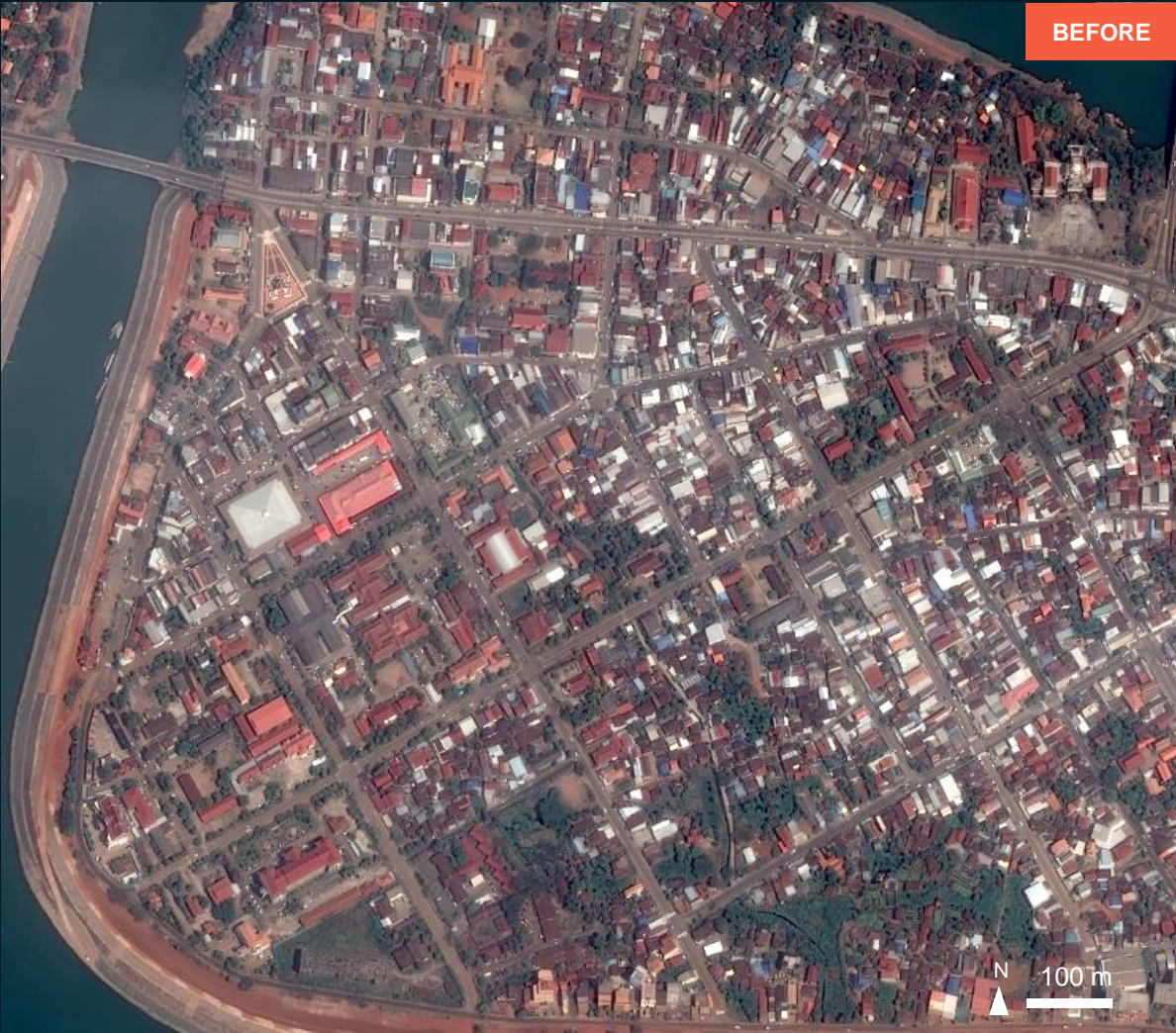


AOI-2 PAKSE CITY, MUONG DISTRICT, CHAMPASAK PROVINCE

No visible floods/damage

Image center:

105°48'4.332"E
15°7'7.629"N



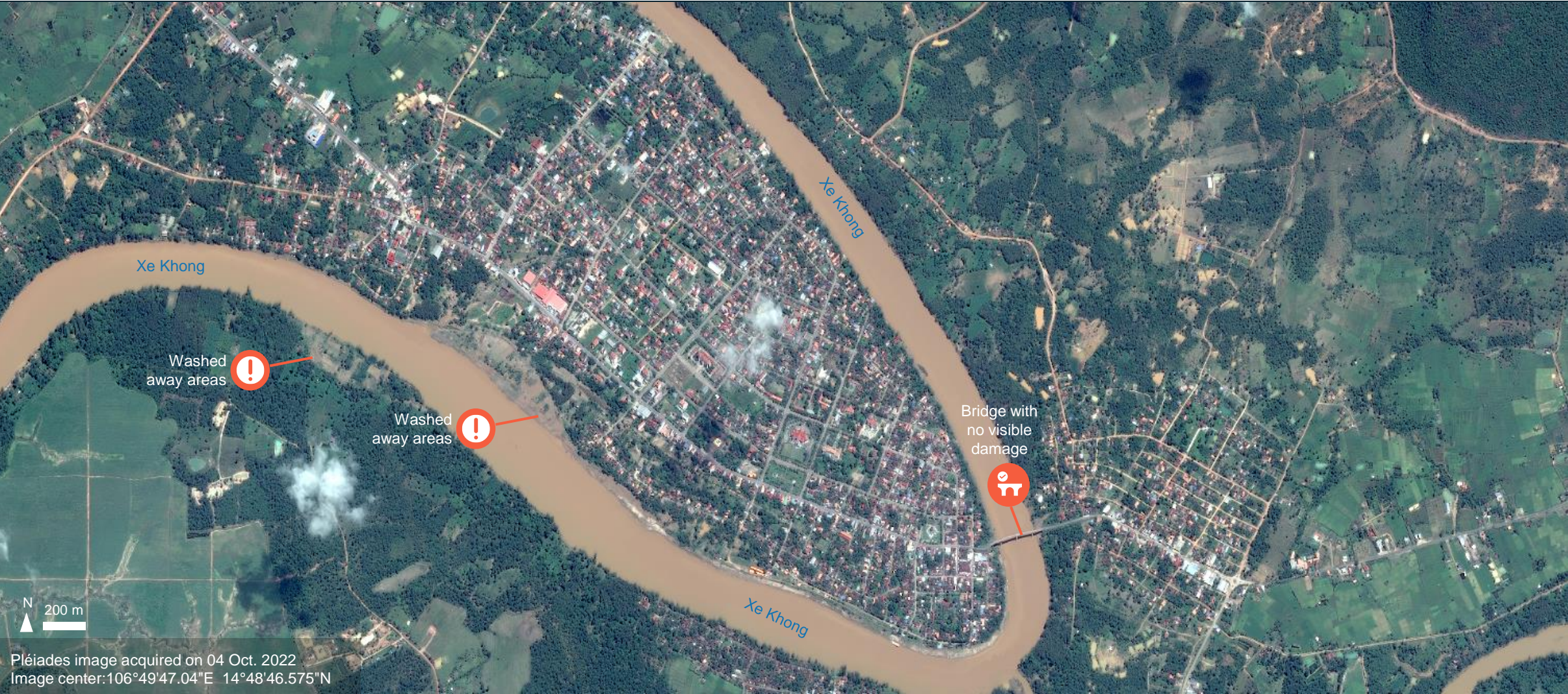
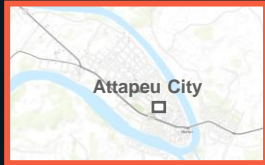
Pléiades/ 09 Mar. 2022



Pléiades/ 04 Oct. 2022

AOI-3 ATTAPEU CITY, SAMAKKHIXAY DISTRICT, ATTAPEU PROVINCE

Riverbank erosion along Xe Khong River

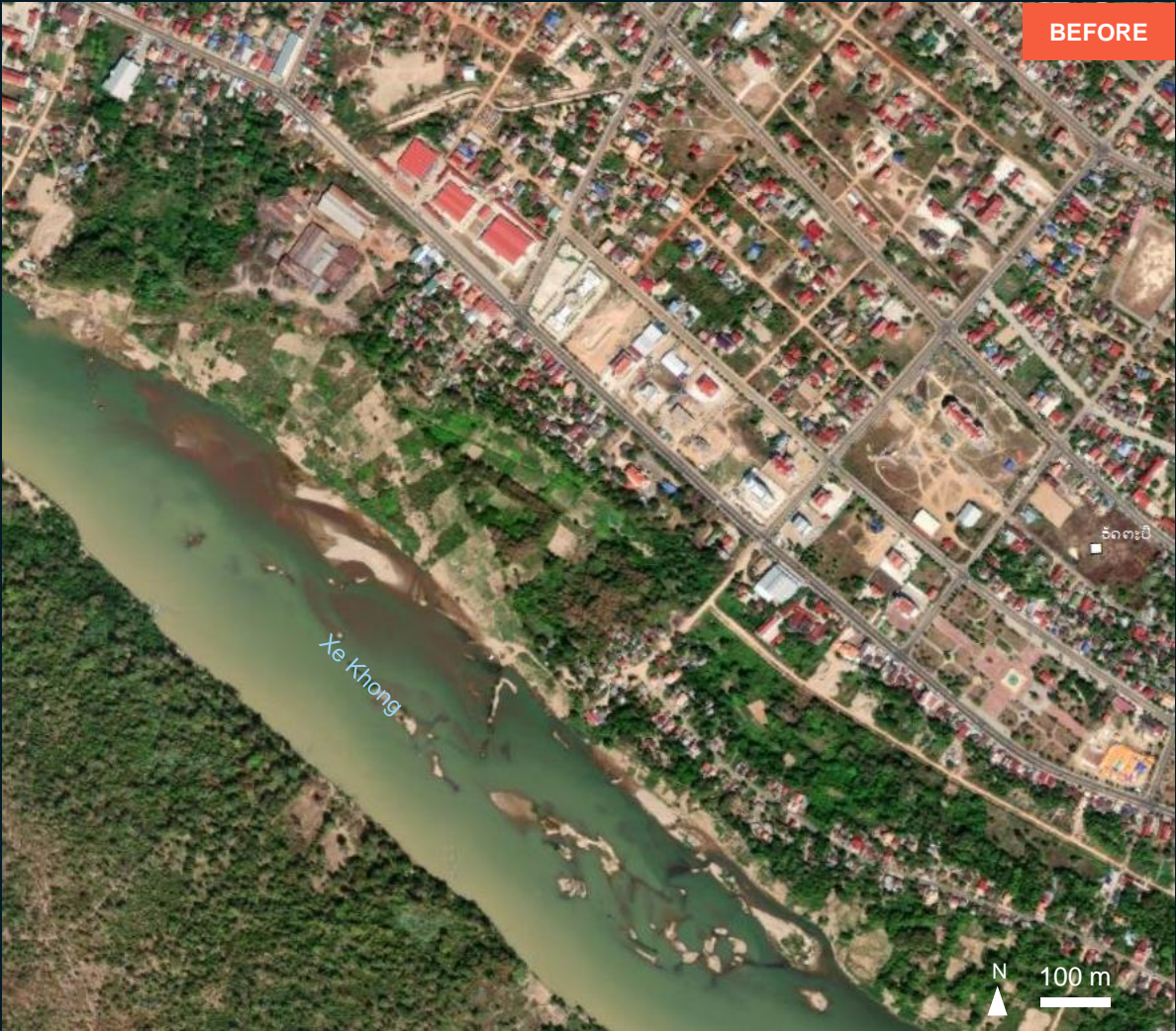


AOI-3 ATTAPEU CITY, SAMAKKHIXAY DISTRICT, ATTAPEU PROVINCE

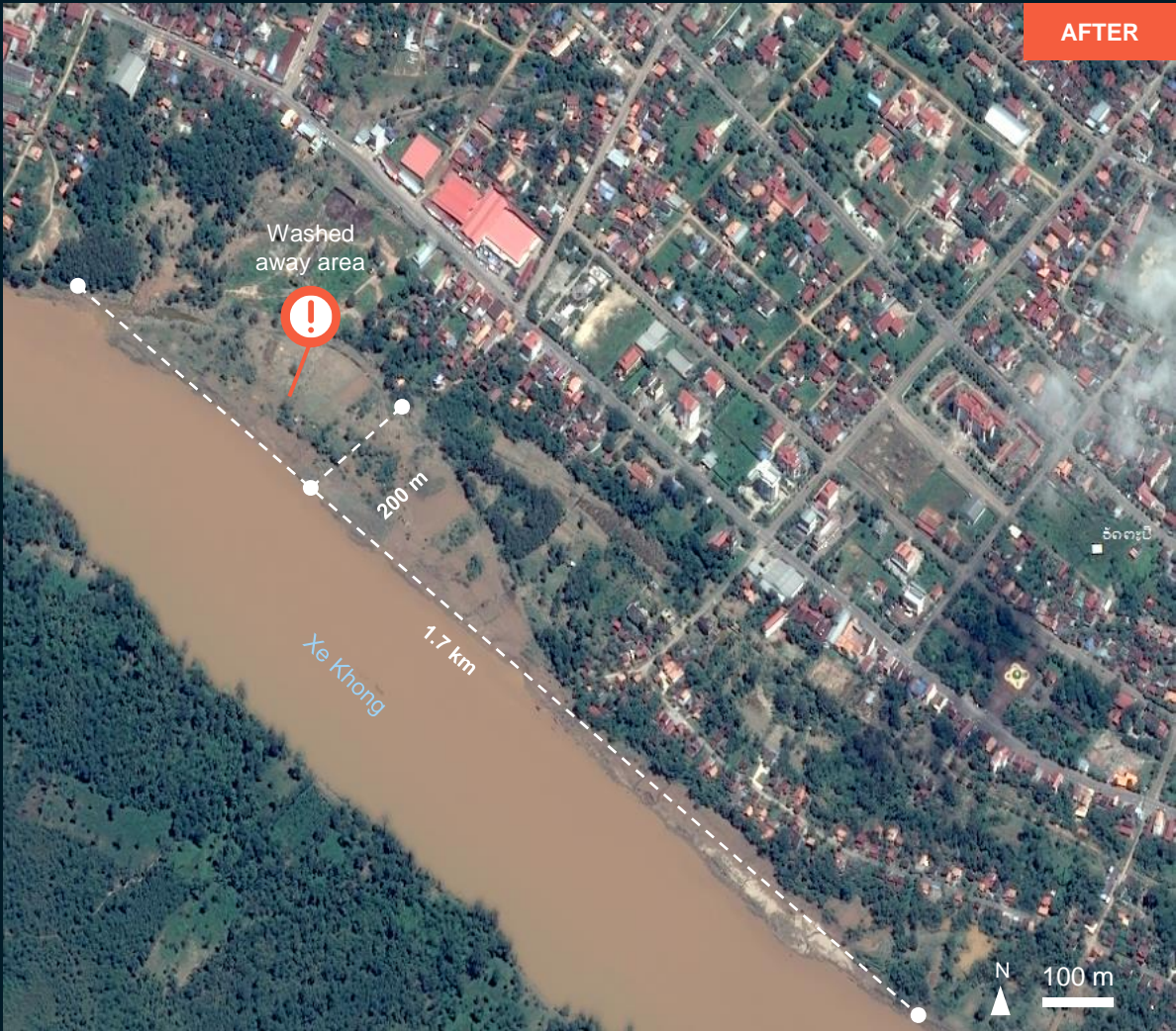
Riverbank erosion along Xe Khong River

Image center:

106°49'12.004"E
14°48'44.786"N



WorldView-23/ 2 Jan. 2015



Pléiades/ 04 Oct. 2022

SUMMARY OF FINDINGS

- Riverbank erosion along Xe Khong River in Attapeu province observed as of 4 October 2022;
- No major floods or widespread damage could be observed in Salavan, Pakse, and Attaeu Cities;

COPYRIGHTS AND SOURCES

Data sources:

(1) Satellite Image (Post-event)

Satellite Data : Pleiades
Imagery Dates : 04 and 5 Sep. 2022 (03:30 UTC)
Resolution: 50 cm
Copyright: ©CNES (2022), Distribution Airbus DS.
Source: Airbus DS

(2) Satellite Image (Pre-event)

Satellite Data : Pleiades
Imagery Dates : 09 Mar. 2022
Resolution: 50 cm
Copyright: ©CNES (2022), Distribution Airbus DS.
Source: Airbus DS

Satellite Data : WorldView-2
Imagery Dates : 10 Feb. 2022
Copyright: 2022 Digital Globe
Source: ESRI Basemap

Satellite Data : GeoEye-1
Imagery Dates : 9 Oct. 2020
Copyright: 2020 Digital Globe
Source: ESRI Basemap

(3) Ancillary data

Cyclone track: Joint Research Centre (JRC)
Analysis: United Nations Satellite Centre (UNOSAT)
Production: United Nations Satellite Centre (UNOSAT)



@UNOSAT



@UNITAR.unosat



UNOSAT, United Nations Institute for Training
and Research (UNITAR)
7 bis, Avenue de la Paix, CH-1202 Geneva 2,
Switzerland

T +41 022 917 4720
E unosat@unitar.org
www.unosat.org