


30 September 2022

TROPICAL CYCLONE NORU-22

PRELIMINARY SATELLITE-DERIVED FLOOD AND DAMAGE ASSESSMENT

Sekong City, Sekong Province, Lao PDR

 Status: Flood affected structures observed

 Further action(s): Continue monitoring


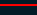




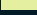



AIRBUS



LAO PDR



-  Cyclone position
-  Cyclone track
-  International boundary
-  Province boundary
-  Area of interest
- Wind speed**
-  High (>120 km/h)
-  Medium (60-120 km/h)
-  Low (<60 km/h)

AOI1- SEKONG CITY, SEKONG PROVINCE

Flood affected structures

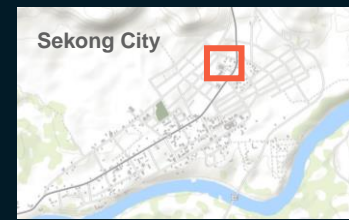


AOI 1-1 SEKONG CITY, SEKONG PROVINCE

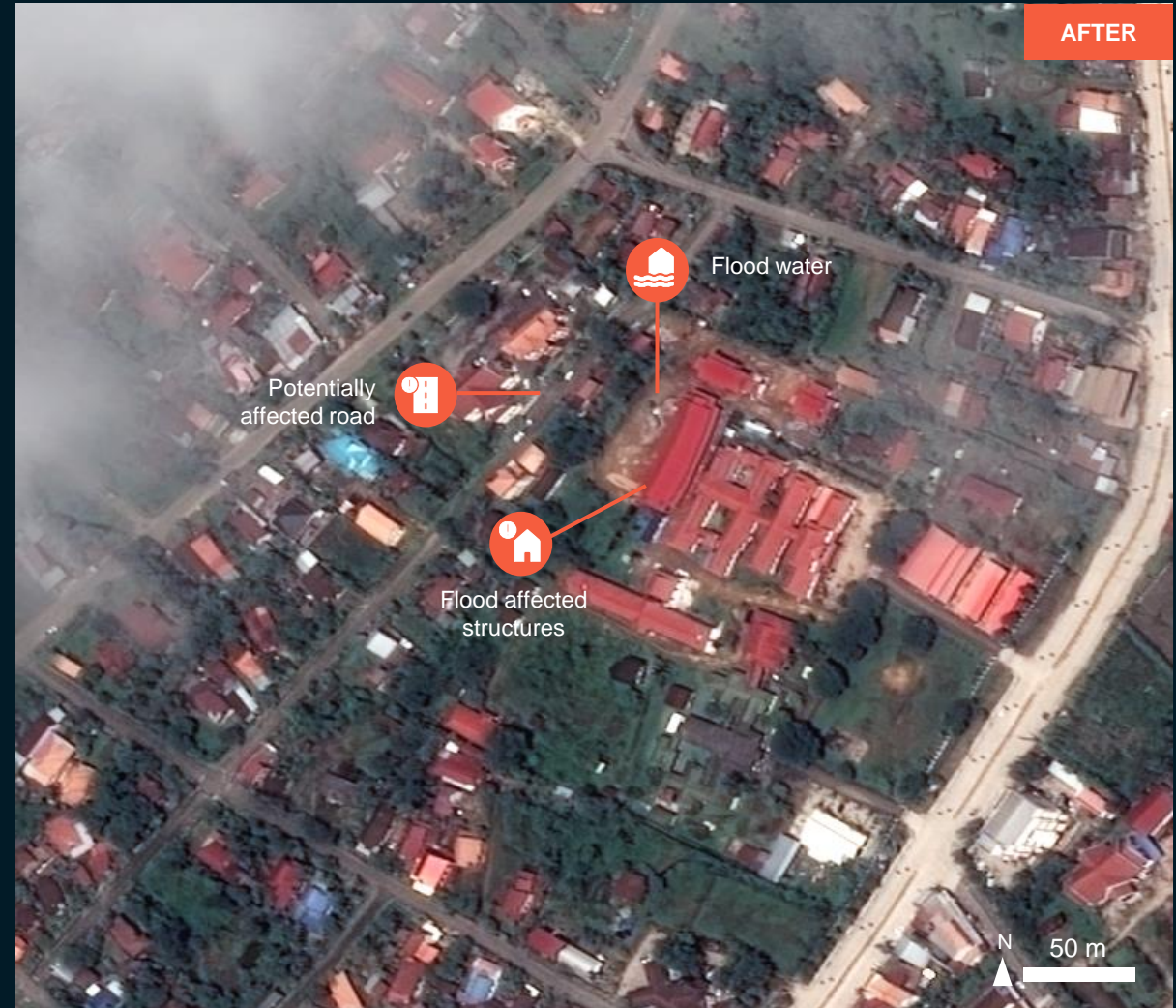
Flood affected structures and Potentially affected road

Image center:

106°43'49.608"E
15°21'21.706"N



GeoEye-1/ 14 Feb. 2017



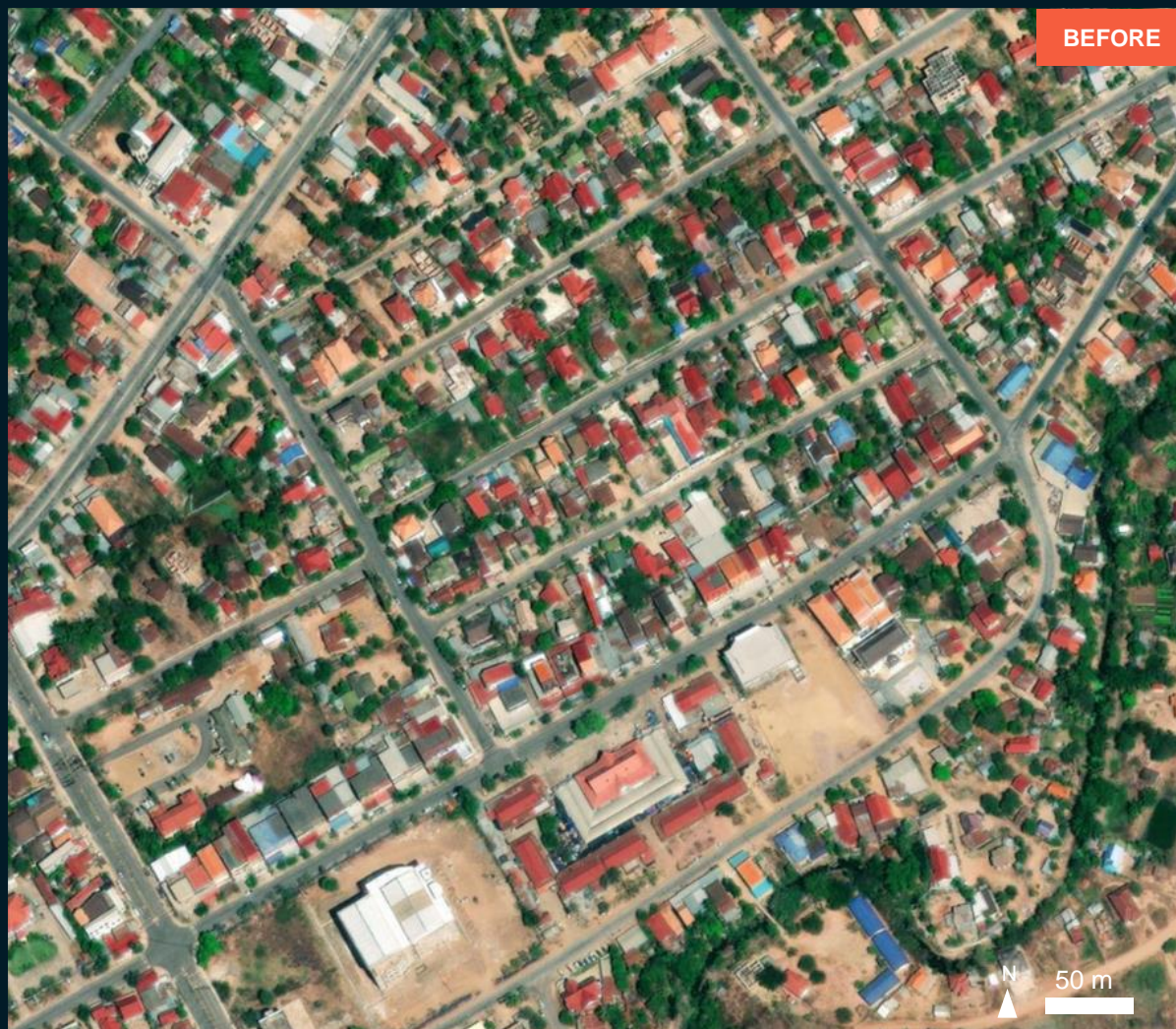
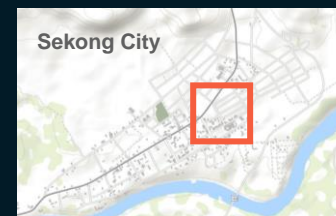
Pléiades / 30 Sep. 2022

AOI 1-2 SEKONG CITY, SEKONG PROVINCE

No visible damage

Image center:

106°43'54.928"E
15°21'2.654"N



GeoEye-1/ 14 Feb. 2017



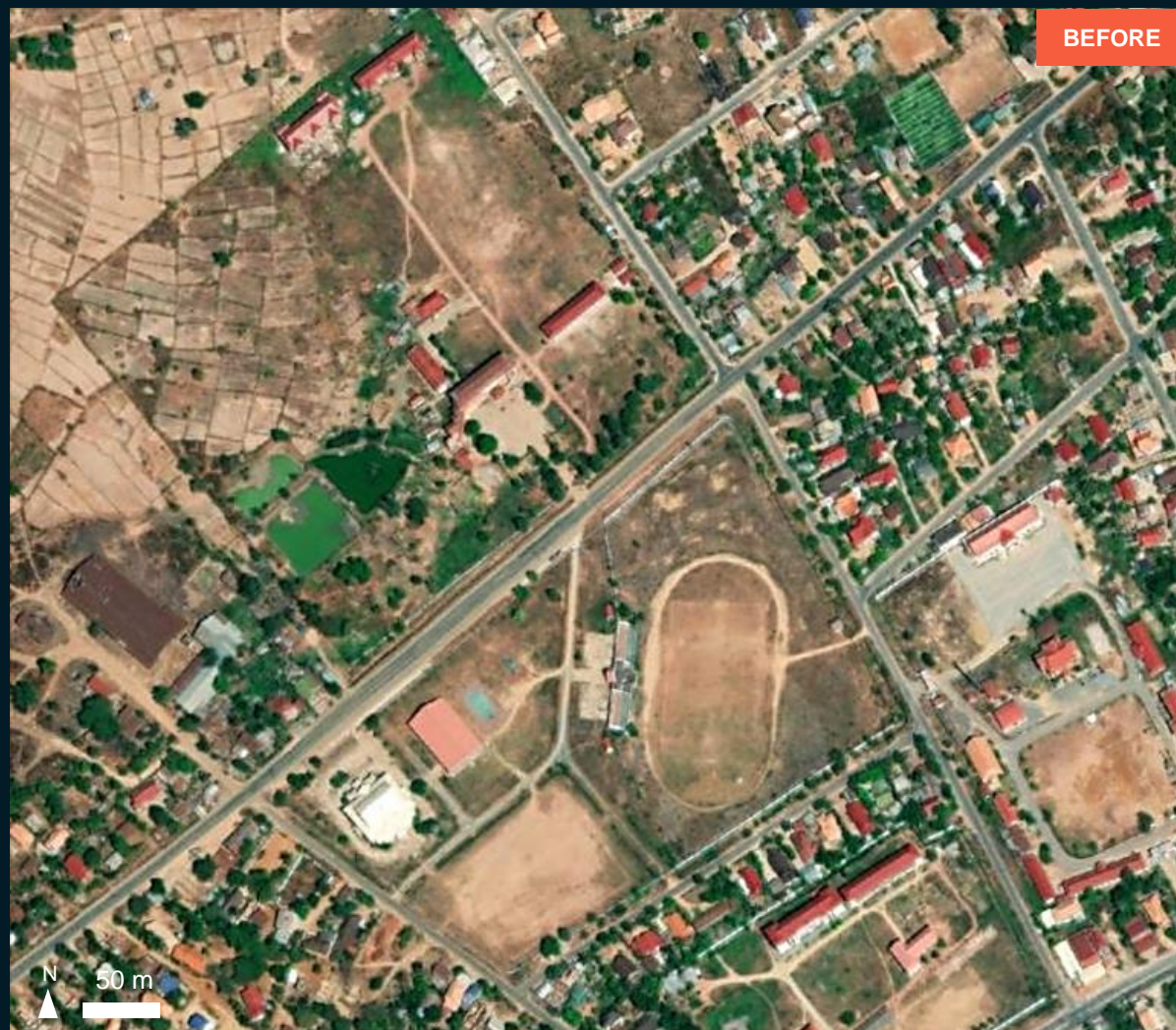
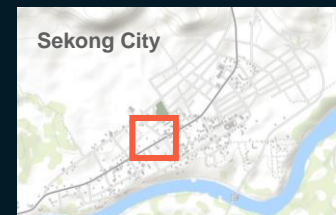
Pléiades / 30 Sep. 2022

AOI 1-3 SEKONG CITY, SEKONG PROVINCE

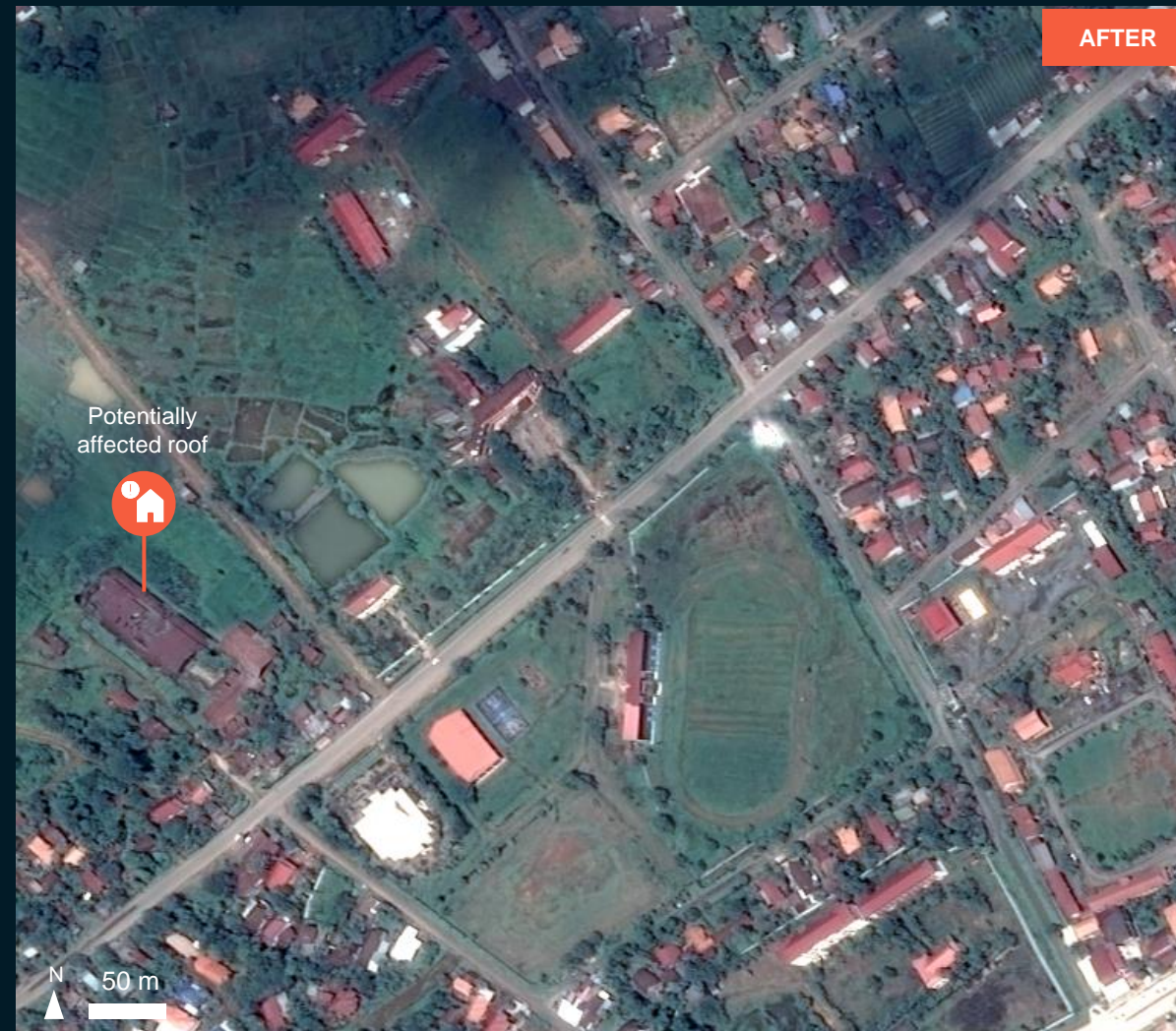
Potentially affected structure

Image center:

106°43'23.004"E
15°21'6.314"N



GeoEye-1/ 14 Feb. 2017



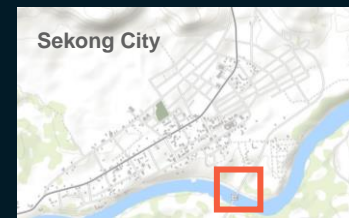
Pléiades / 30 Sep. 2022

AOI 1-4 SEKONG CITY, SEKONG PROVINCE

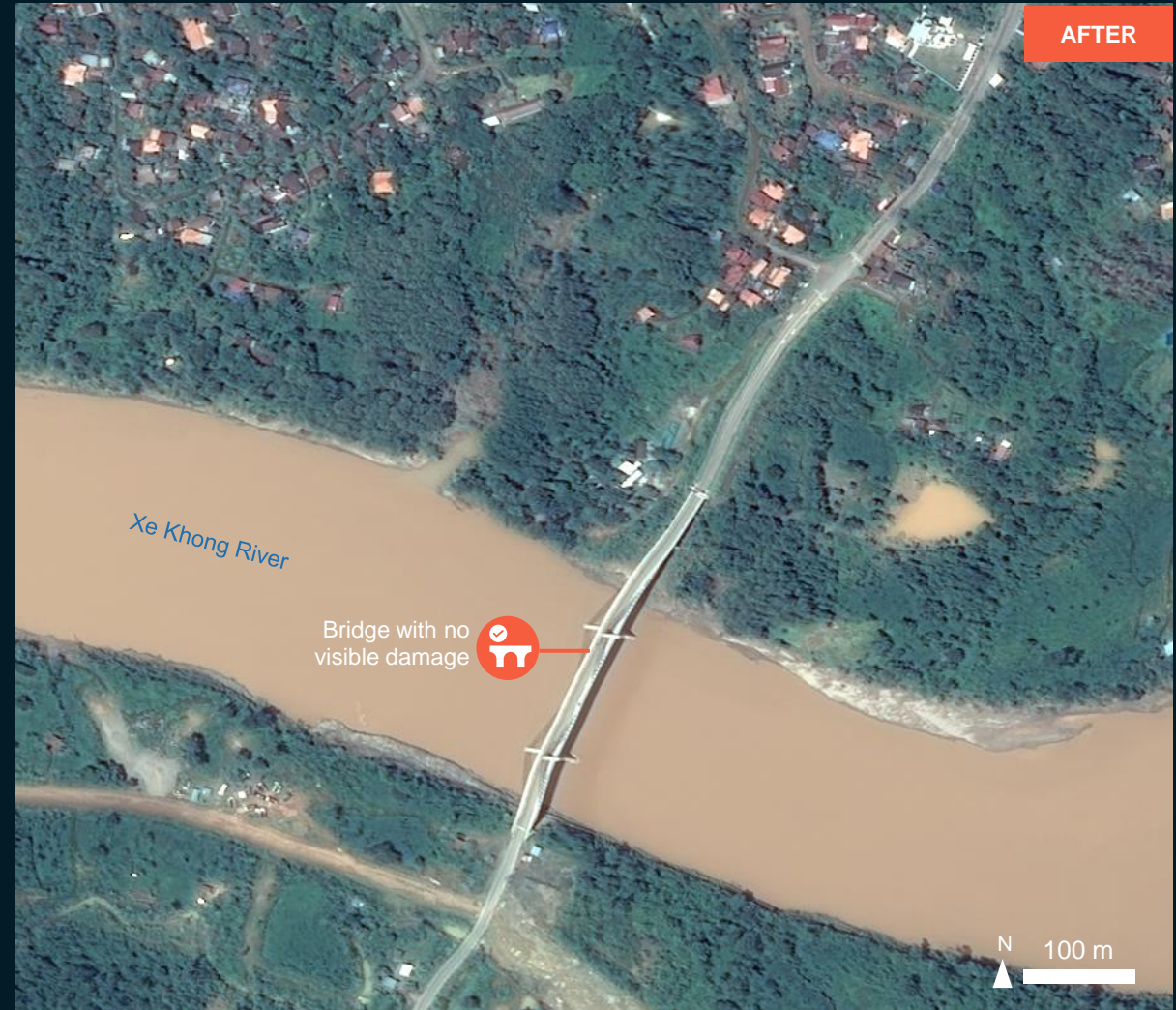
No visible damage

Image center:

106°43'57.176"E
15°20'30.825"N



GeoEye-1/ 14 Feb. 2017



Pléiades / 30 Sep. 2022

SUMMARY OF FINDINGS

- Small flooded area in Sekong City, Sekong Province observed as of 30 Sep. 2022;
- Flood affected structures in Sekong City, Sekong Province observed as of 30 Sep. 2022;
- Potentially flood affected road in Sekong City, Sekong Province observed as of 30 Sep. 2022;
- Potentially damaged structure in Sekong City, Sekong Province observed as of 30 Sep. 2022;
- No major floods or widespread damage could be observed in this area.

COPYRIGHTS AND SOURCES

Data sources:

(1) Satellite Image (Post-event)

Satellite Data : Pleiades :
Imagery Dates : 30 Sep. 2022 (03:10 UTC)
Resolution: 50 cm
Copyright: ©CNES (2022), Distribution Airbus DS.
Source: Airbus DS

(2) Satellite Image (Pre-event)

Satellite Data : GeoEye-1
Imagery Dates : 14 Feb. 2017
Copyright: 2017 Digital Globe
Source: ESRI Basemap

(3) Ancillary data

Cyclone track: Joint Research Centre (JRC)
Analysis: United Nations Satellite Centre (UNOSAT)
Production: United Nations Satellite Centre (UNOSAT)



@UNOSAT



@UNITAR.unosat



UNOSAT, United Nations Institute for Training
and Research (UNITAR)
7 bis, Avenue de la Paix, CH-1202 Geneva 2,
Switzerland

T +41 022 917 4720
E unosat@unitar.org
www.unosat.org