

23 Aug. 2022




PRELIMINARY SATELLITE-DERIVED IMPACT ASSESSMENT

Brikama Town, Central District, Brikama Region, Gambia



 Status: Oil leak and potentially affected structures observed

 Further action(s): Continue monitoring



The map displays the country of Gambia, with a focus on the Banjul region. The main map shows the coastline and major districts: KANIFING, BANJUL, KANAFING, KOMBO NORTH/ST MARIE, KOMBO SOUTH, KOMBO CENTRAL, and KOMBO EAST. A red box in the Banjul region indicates the Area of Interest (AOI). An inset map provides a closer view of the AOI, showing its proximity to the city of Banjul and the surrounding districts. The AOI is located in the northern part of the Banjul region, near the border with KANAFING. The map also shows the location of Banjul International Airport (BJL) and the city of Banjul. The legend indicates that the red box represents the AOI and the red line represents the boundary.

 Region boundary

NAWEC POWER STATION BRIKAMA AND SURROUNDING, KOMBO CENTRAL DISTRICT, BRIKAMA REGION

Leaked oil and potentially affected structures observed



NAWEC POWER STATION BRIKAMA, BRIKAMA TOWN, KOMBO CENTRAL DISTRICT, BRIKAMA REGION

Leaked oil observed

Image center:
16°38'0.702"W
13°17'38.616"N



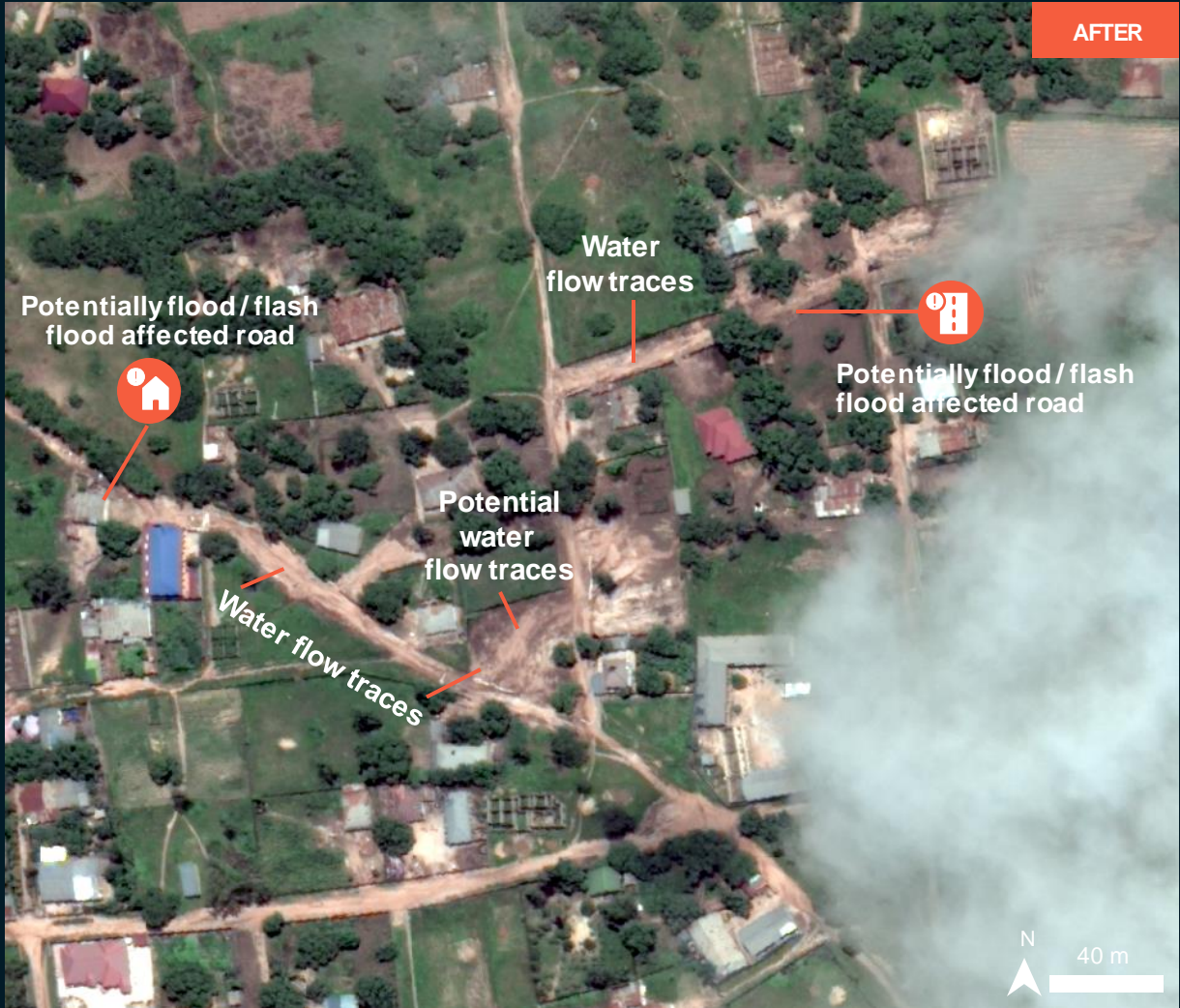
BRIKAMA TOWN, BRIKAMA TOWN, KOMBO CENTRAL DISTRICT, BRIKAMA REGION

Potential water flow traces and flood / flash flood affected roads

Image center:
16°37'43.166"W
13°17'35.633"N



WorldView-2 / 15 Mar. 2022

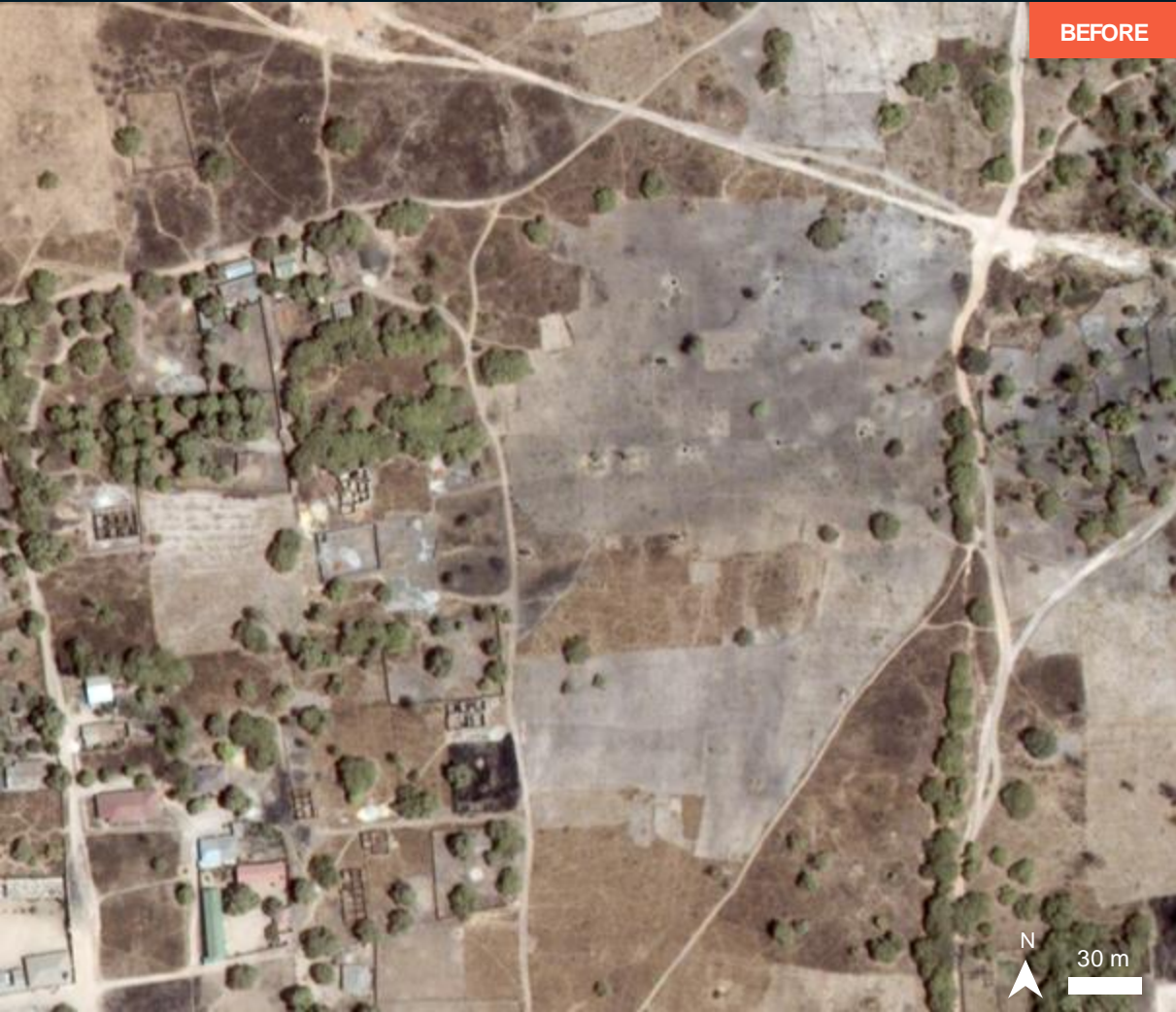


WorldView-3 / 13 Aug. 2022

BRIKAMA TOWN, BRIKAMA TOWN, KOMBO CENTRAL DISTRICT, BRIKAMA REGION

Potential flood / flash flood affected road(s)

Image center:
16°37'32.483"W
13°17'40.135"N



WorldView-2 / 15 Mar. 2022



WorldView-2 / 22 Aug. 2022

SUMMARY OF FINDINGS

- Leaked oil in the surroundings of Brikama's power station observed as of 13 Aug 2022;
- Potentially flood / flash flood affected structures in the surroundings of Brikama's power station observed as of 13 Aug 2022;
- Potentially flood / flash flood affected roads in the surroundings of Brikama's power station observed as of 13 and 22 Aug 2022.

COPYRIGHTS AND SOURCES

Data sources:

(1) Satellite Image (Post-event)

Satellite : WorldView-3 image
Imagery Date : 22 Aug. 2022 about 11:51 UTC

Satellite : WorldView-2 image
Imagery Date : 13 Aug. 2022 about 11:32 UTC
Resolution : 50 cm
Copyright: © (2022) DigitalGlobe, Inc.
Source: USGS / HDDS

(2) Satellite Image (Pre-event)

Satellite : WorldView-2 image
Imagery Date : 15 Mar. 2022 about 11:45 UTC
Resolution : 50 cm
Copyright: © (2022) DigitalGlobe, Inc.
Source: USGS / HDDS

(3) Ancillary data

Populate place: OpenStreetMap
Administrative boundaries: WFP

Analysis: United Nations Satellite Centre (UNOSAT)
Production: United Nations Satellite Centre (UNOSAT)



@UNOSAT



@UNITAR.unosat



UNOSAT, United Nations Institute for Training
and Research (UNITAR)
7 bis, Avenue de la Paix, CH-1202 Geneva 2,
Switzerland

T +41 22 917 4720
E unosat@unitar.org
www.unosat.org