



unitar

United Nations Institute for Training and Research

UNOSAT

Production Date: 15/11/2013

Version 1.0

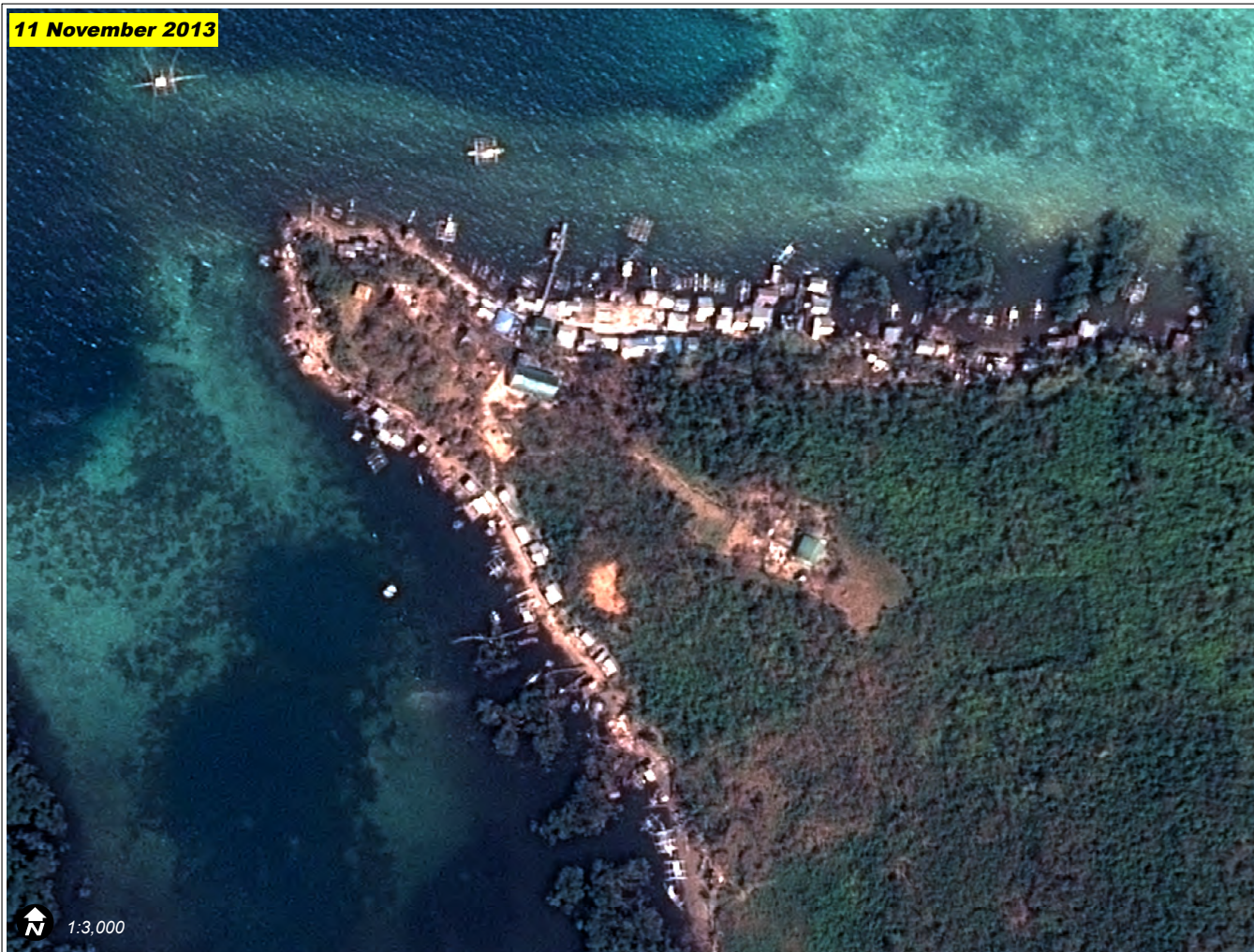
Activation Number: TC20131108PHL



DAMAGE TO CHINDOLAN ISLAND, PALAWAN, PHILIPPINES

As seen in Pleiades imagery collected 15 November 2013

11 November 2013



Copyright CNES / Astrium Services 2013

This settlement on the northern coast of Chindolan Island indicates some structural damage and heavy damage to vegetation. See Figure 1 (next page) for pre-disaster comparison.

Center Coordinates: 120°3'10.49"E 11°55'55.58"N

UNITAR / UNOSAT

unosat@unitar.org

Palais des Nations,

Geneva, Switzerland

T: +41 22 767 4020

24/7 hotline: +41 76 487 4998

www.unitar.org/unosat

Satellite Data (1): Pleiades
Imagery Dates: 15 November 2013
Resolution: 50 cm
Copyright: CNES 2013 -
Distribution Astrium Services / Spot
Image
Source: Astrium Services
Satellite Data (2): Various
Imagery Date: Pre-Crisis

Copyright: Microsoft
Source: Bing
Road Data : Google Map Maker /
OSM / ESRI
Other Data: USGS, UNCS, NASA,
NGA
Analysis : UNITAR / UNOSAT
Production: UNITAR / UNOSAT
Analysis conducted with ArcGIS



Disaster coverage by the International Charter 'Space and Major Disasters'. For more information on the Charter, which is about assisting the disaster relief organizations with multi-satellite data and information, visit www.disasterscharter.org

The depiction and use of boundaries, geographic names and related data shown here are not warranted to be error-free nor do they imply official endorsement or acceptance by the United Nations. UNOSAT is a program of the United Nations Institute for Training and Research (UNITAR), providing satellite imagery and related geographic information, research and analysis to UN humanitarian and development agencies and their implementing partners.

This work by UNITAR/UNOSAT is licensed under a Creative Commons Attribution-NonCommercial-ShareAlike 3.0 Unported License.

Figure 1: Damage in Chindolan Island, Palawan



A small village on Chindolan Island in Palawan in pre-crisis image (top), and as of 11 November 2013 (bottom) showing moderate signs of damage, including areas of vegetation loss, some destroyed structures, and marine debris. Conditions are similar in other areas sampled in northern Palawan, with damage apparent but no extreme losses similar to Leyte and elsewhere to the east.

This is a preliminary assessment and has not yet been validated in the field. Please send feedback to UNITAR/UNOSAT at the contact information below.

UNOSAT Contact:

E-mail: unosat@unitar.org

T: +41 22 767 4020 (UNOSAT Operations)

T: +41 22 767 4137 (UNOSAT Management)

F: +41 22 766 9145

24/7 hotline: +41 76 487 4998



UNOSAT

Post address

UNOSAT / UNITAR

Palais des Nations

CH-1211 Geneva 10

Switzerland

Visiting address

UNOSAT / UNITAR

International Environment House

Chemin des Anémones 11-13

CH-1219 Châtelaine, Geneva - Switzerland

Send us GEO-PICTURES from disasters worldwide. Scan QR code or download free UN-ASIGN APP here:



<http://download.ansur.no/assign-un.apk>



<https://itunes.apple.com/app/un-assign/id507125097?mt=8>