


8 Jun. 2022




OIL SPILL IN GAMBIA PRELIMINARY SATELLITE-DERIVED DAMAGE ASSESSMENT



Along the River Gambia

 Status: Widespread potential oil film and oil slick is observed over the River Gambia

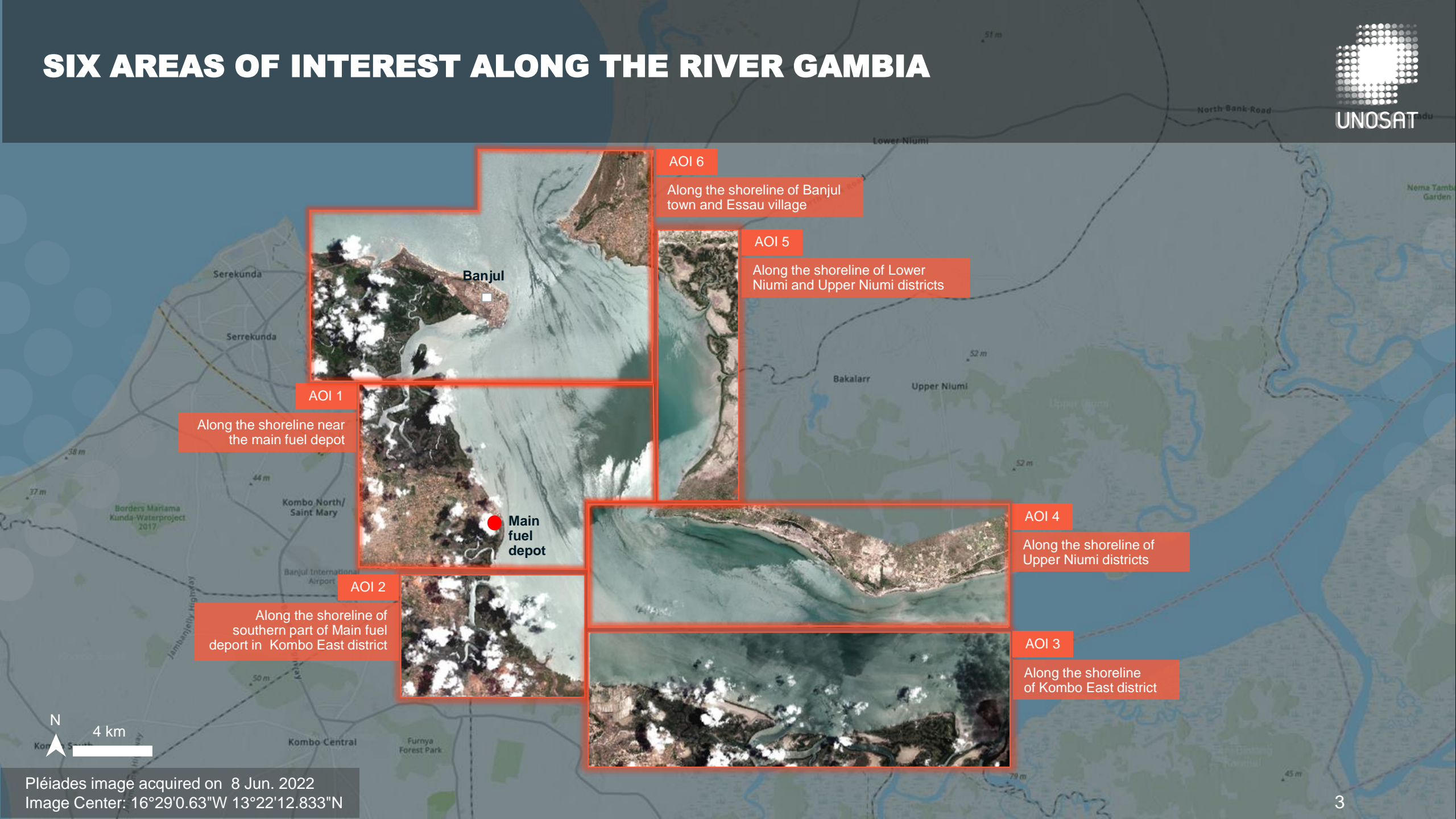
 Further action(s): Continue monitoring



GAMBIA



SIX AREAS OF INTEREST ALONG THE RIVER GAMBIA



AOI 1
Along the shoreline near the main fuel depot

AOI 2
Along the shoreline of southern part of Main fuel depot in Kombo East district

AOI 3
Along the shoreline of Kombo East district

AOI 4
Along the shoreline of Upper Niumi districts

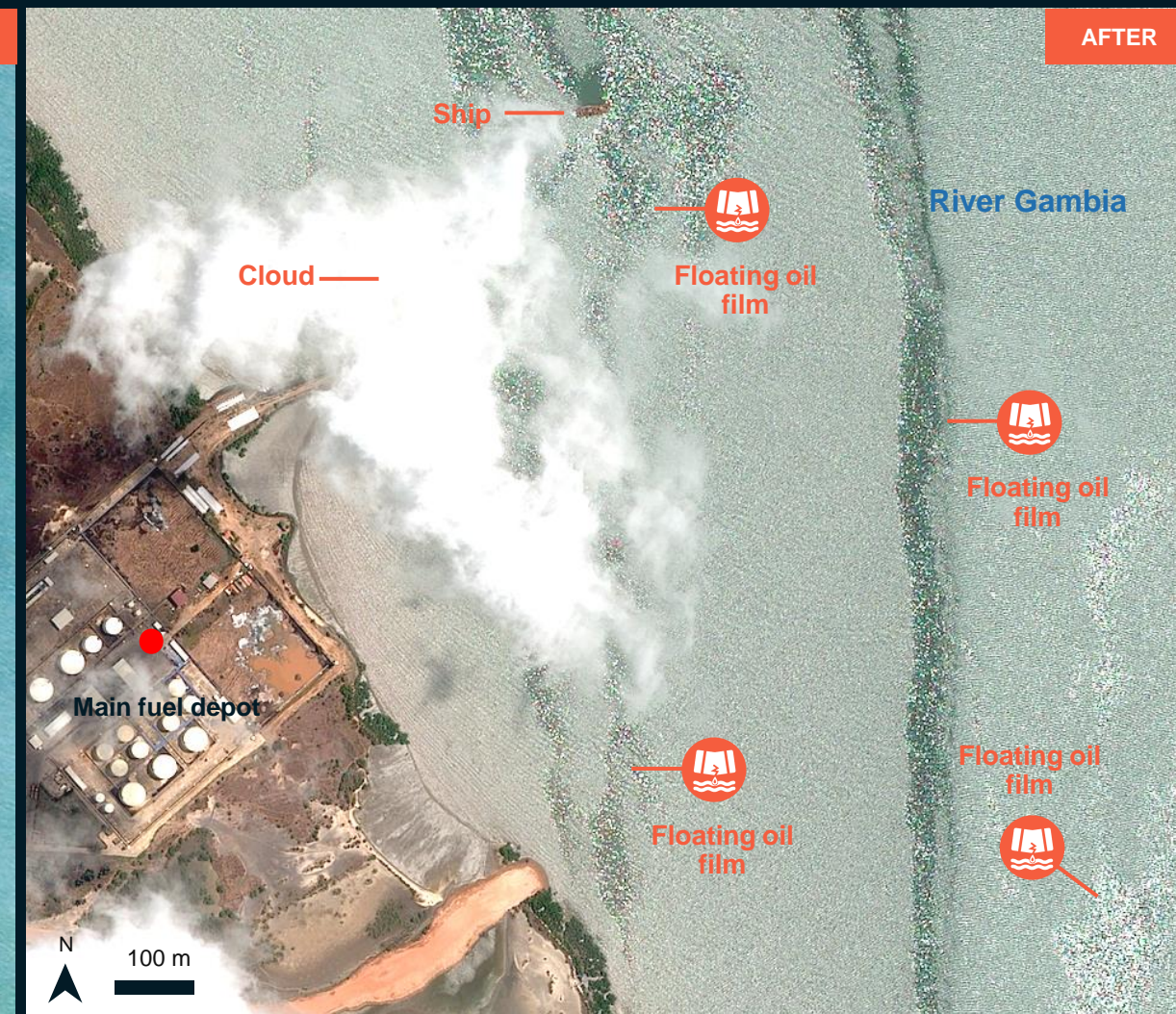
AOI 5
Along the shoreline of Lower Niumi and Upper Niumi districts

AOI 6
Along the shoreline of Banjul town and Essau village

AOI 1-1 ALONG THE SHORELINE OF THE MAIN FUEL DEPOT

Potential oil film observed near the main fuel depot

Image center:
16°34'23.474"W
13°22'1.136"N



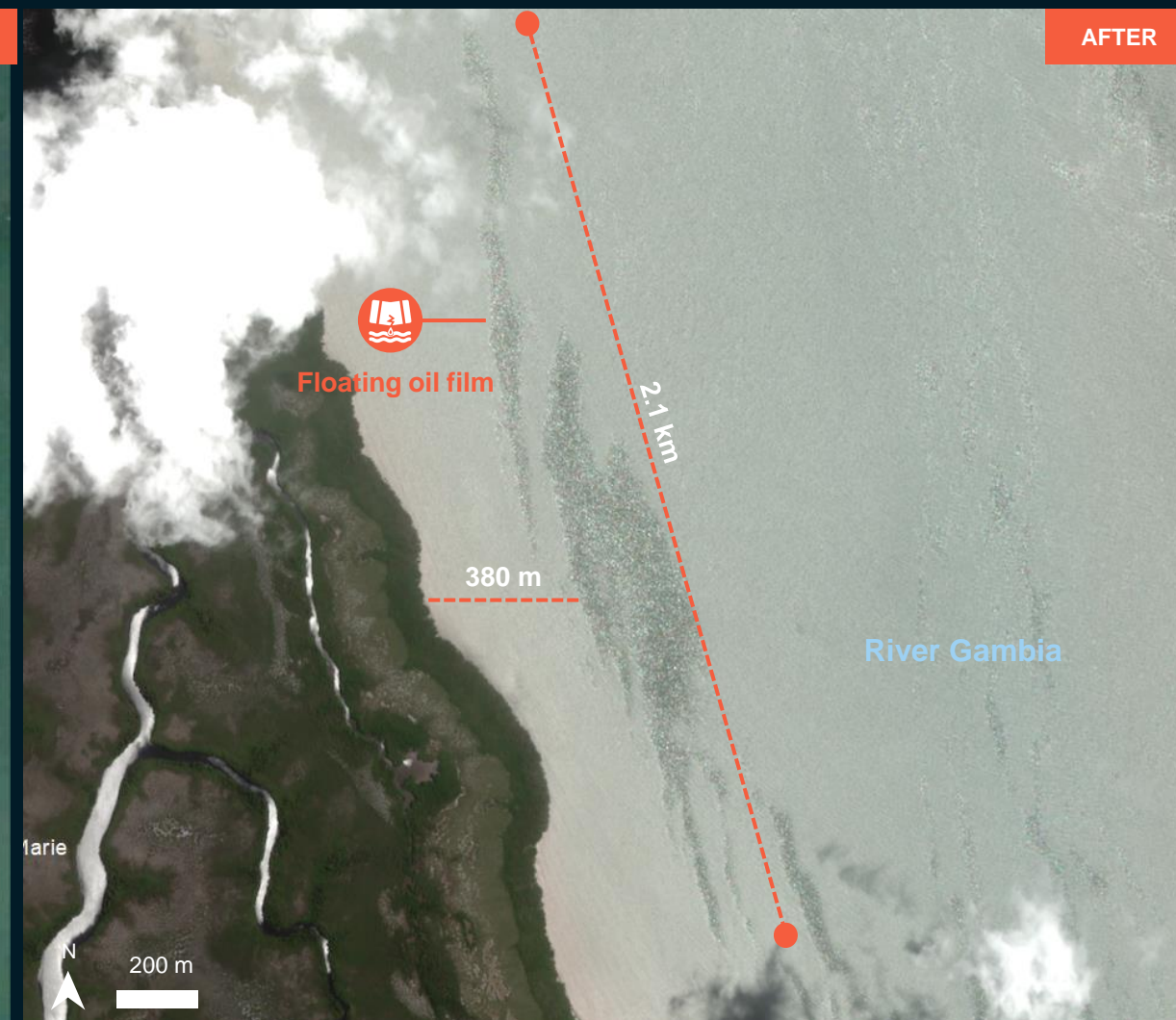
AOI 1-2 ALONG THE SHORELINE NEAR THE MAIN FUEL DEPOT 3.8 KM FROM MAIN FUEL DEPOT

Potential oil film observed along the shoreline

Image center:
16°35'23.07"W
13°24'0.904"N



Google Earth/ Oct. 2021



Pléiades / 8 Jun. 2022

AOI 2- ALONG THE SHORELINE OF SOUTHERN PART OF MAIN FUEL DEPT IN KOMBO EAST DISTRICT

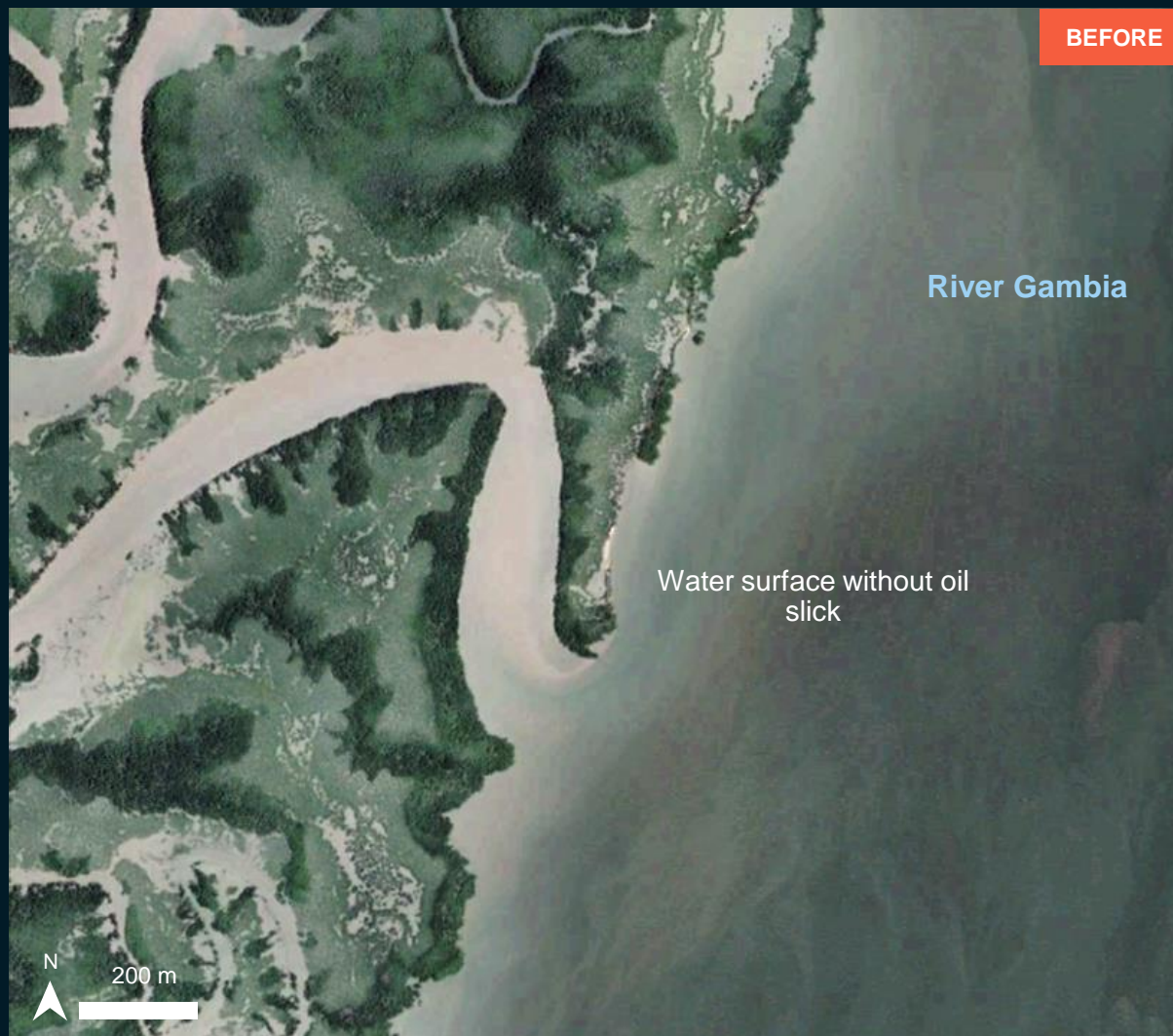
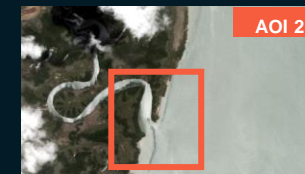
Potential oil film observed along the shoreline



AOI 2- ALONG THE SHORELINE OF SOUTHERN PART OF MAIN FUEL DEPORT IN KOMBO EAST DISTRICT

Potential oil film observed along the shoreline

Image center:
16°34'32.04"W
13°20'42.61"N



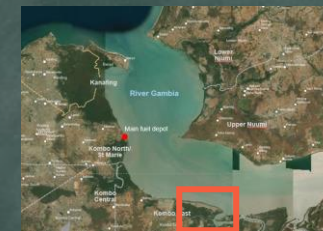
Google Earth/ Oct. 2020



Pléiades / 8 Jun. 2022

AOI 3- ALONG THE SHORELINE OF KOMBO EAST DISTRICT 14 KM FROM MAIN FUEL DEPOT

Potential oil film observed along the shoreline



River Gambia

INSET

Potential oil
slick



Potential oil film



500 m

Pléiades image acquired on 8 Jun. 2022
Image Center: 16°29'0.969"W 13°17'9.846"N

AOI 3-1 ALONG THE SHORELINE OF KOMBO EAST DISTRICT 10 KM FROM MAIN FUEL DEPOT

Potential oil slick observed along the shoreline

Image center:
16°31'1.265"W
13°17'26.944"N



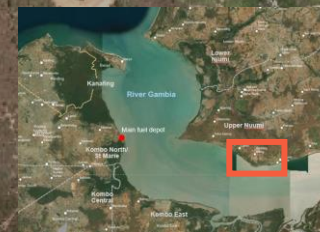
ESRI Basemap /Worldview-2 / 27 Mar. 2021



Pléiades / 8 Jun. 2022

AOI 4-1 ALONG THE SHORELINE OF UPPER NIUMI DISTRICTS 20 KM FROM THE MAIN FUEL DEPOT

Widespread potential oil slick observed over the River Gambia



Potential oil slick



Potential oil slick

INSET



Potential oil slick

River Gambia

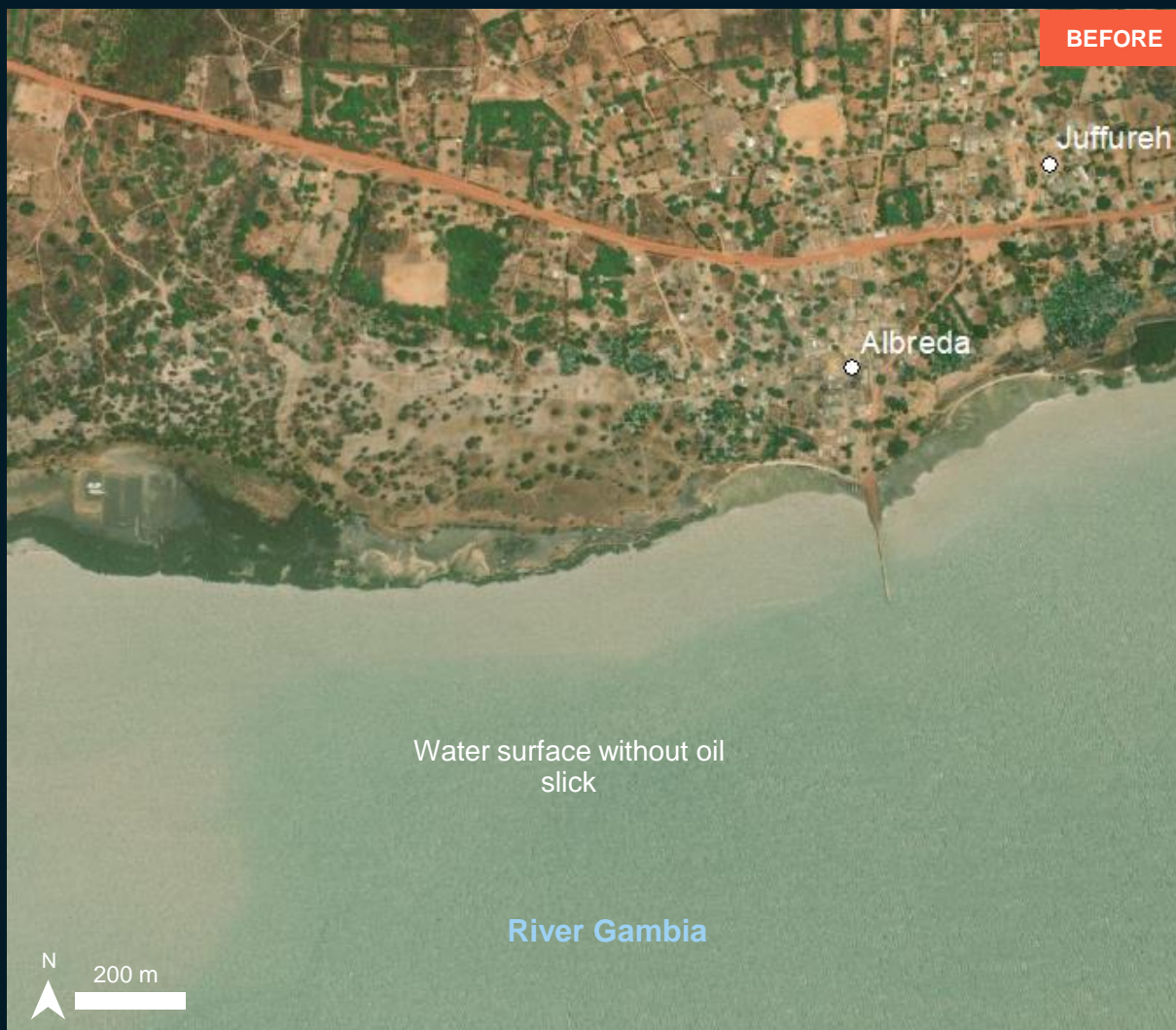


500 m

AOI 4-1 ALONG THE SHORELINE OF KOMBO EAST DISTRICT 20 KM FROM MAIN FUEL DEPOT

Potential oil slick observed along the shoreline

Image center:
16°23'21.412"W
13°19'54.559"N



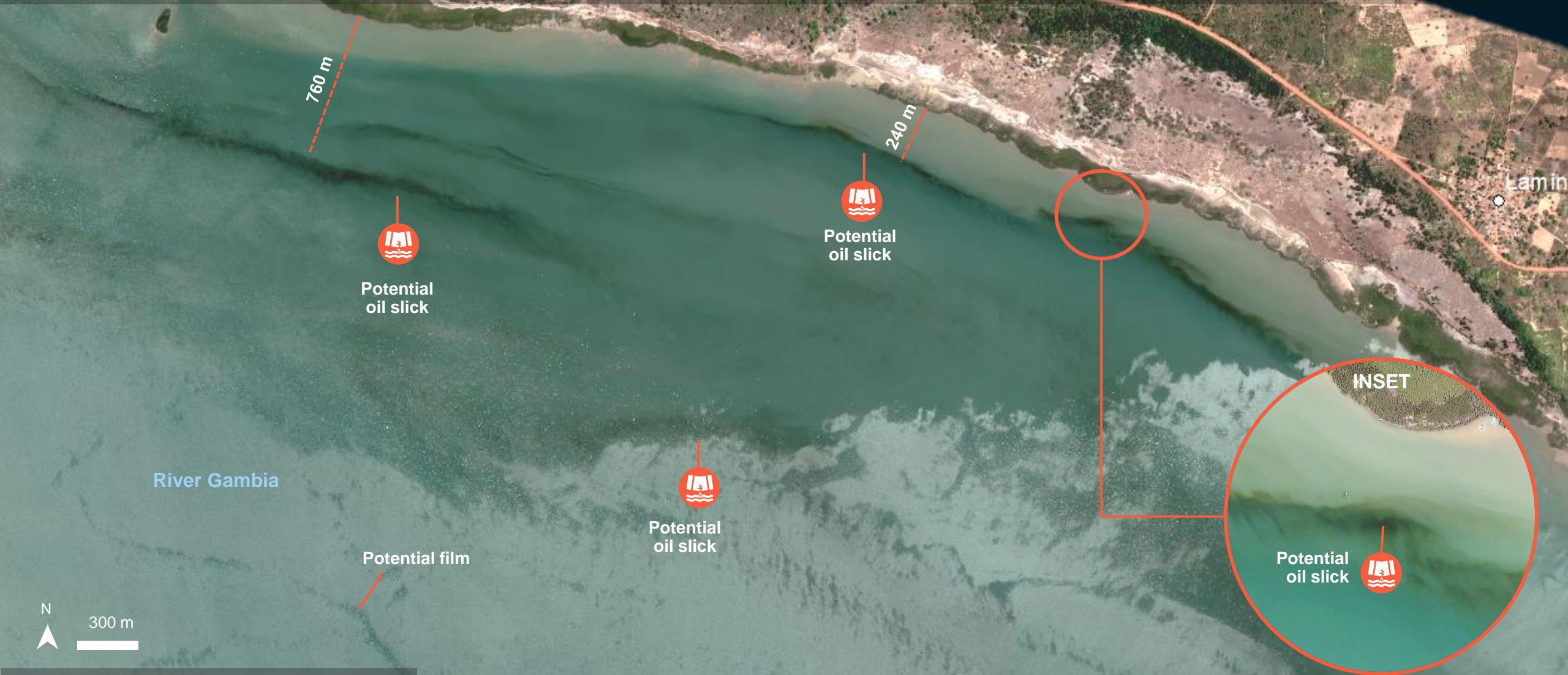
ESRI Basemap/Worldview-3/ 14 May. 2020



Pléiades / 8 Jun. 2022

AOI 4-2- ALONG THE SHORELINE OF UPPER NIUMI DISTRICTS 10 KM FROM THE MAIN FUEL DEPOT

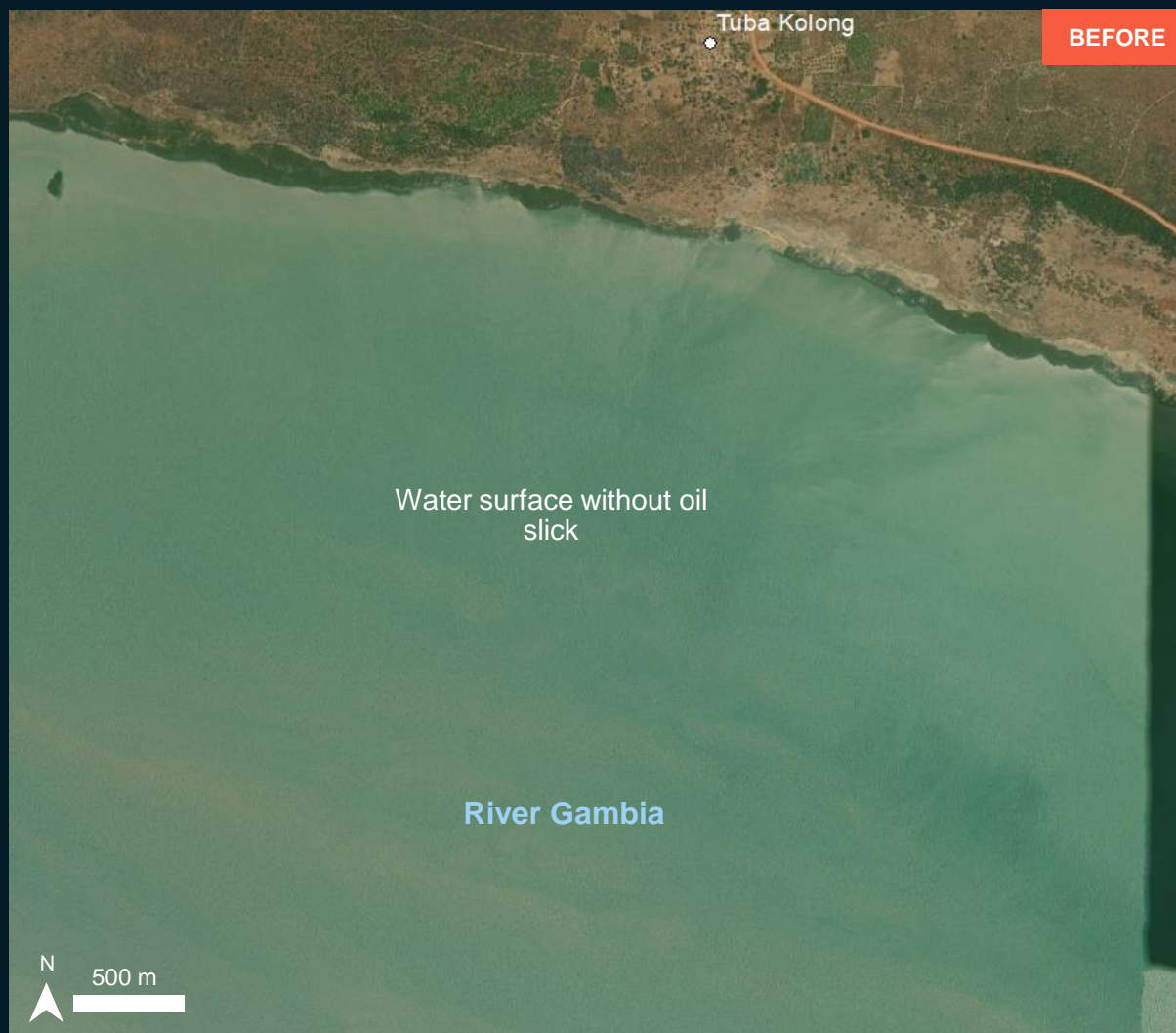
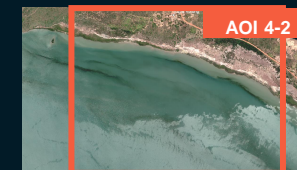
Potential oil slick observed along the shoreline



AOI 4-2 ALONG THE SHORELINE OF KOMBO EAST DISTRICT 10 KM FROM MAIN FUEL DEPOT

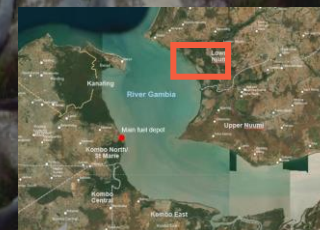
Potential oil slick observed along the shoreline

Image center:
16°28'6.196"W
13°20'32.76"N



AOI 5 - ALONG THE SHORELINE OF LOWER NIUMI DISTRICT 13 KM FROM MAIN FUEL DEPOT

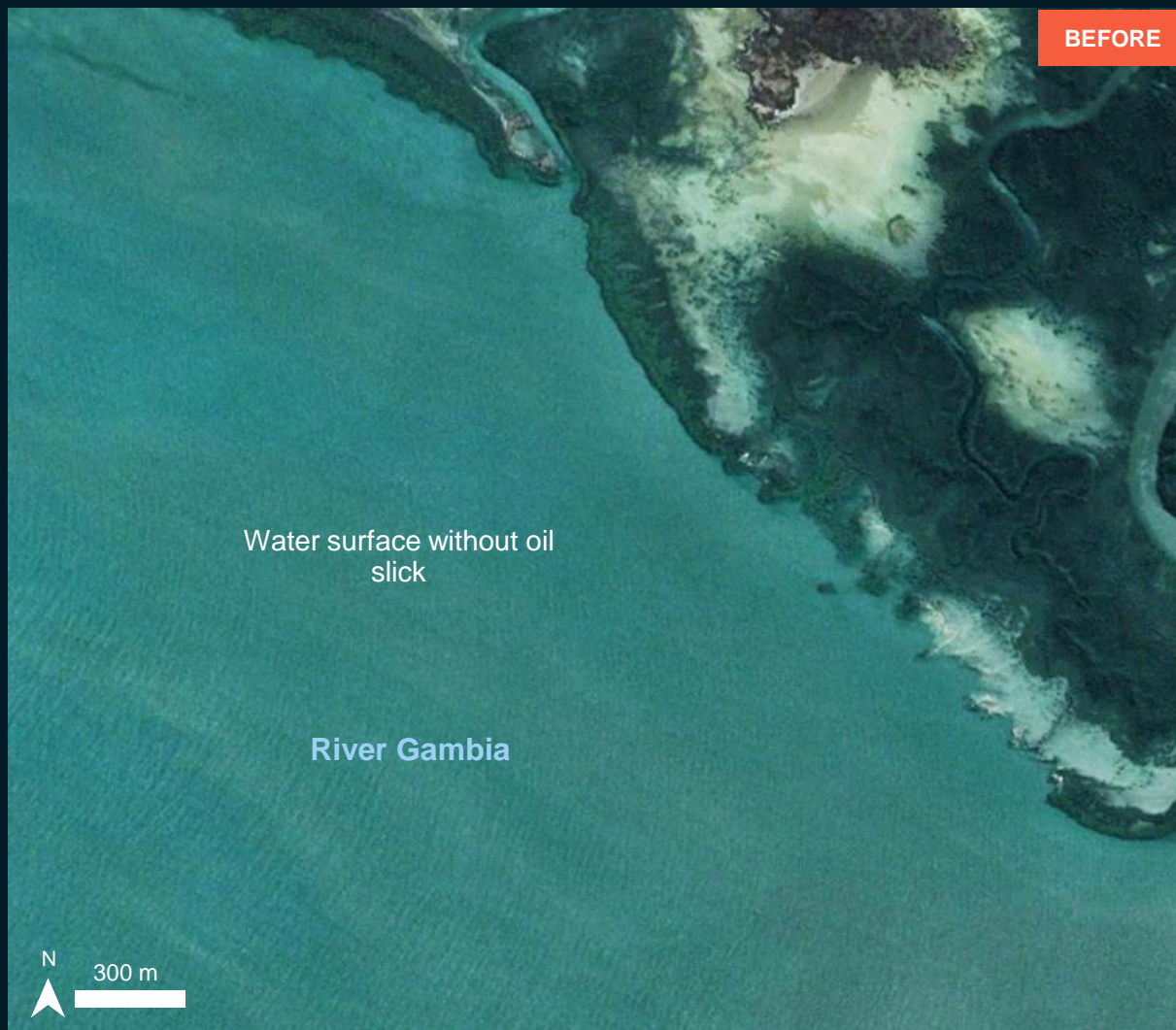
Widespread potential oil film and oil slick observed along the shoreline



AOI 5- ALONG THE SHORELINE OF KOMBO EAST DISTRICT 13 KM FROM MAIN FUEL DEPOT

Widespread potential oil slick observed along the shoreline

Image center:
16°30'2.969"W
13°27'20.575"N



Google Earth/ 28 May. 2021



Pléiades / 8 Jun. 2022

AOI 6 - ALONG THE SHORELINE OF BANJUL TOWN AND ESSAU VILLAGE 10 KM FROM MAIN FUEL DEPOT

Widespread potential oil film observed over the River Gambia



Myamba

Essau

Banjul

River Gambia



600 m



INSET

Potential oil film

Potential oil film

Potential oil slick

Potential oil slick

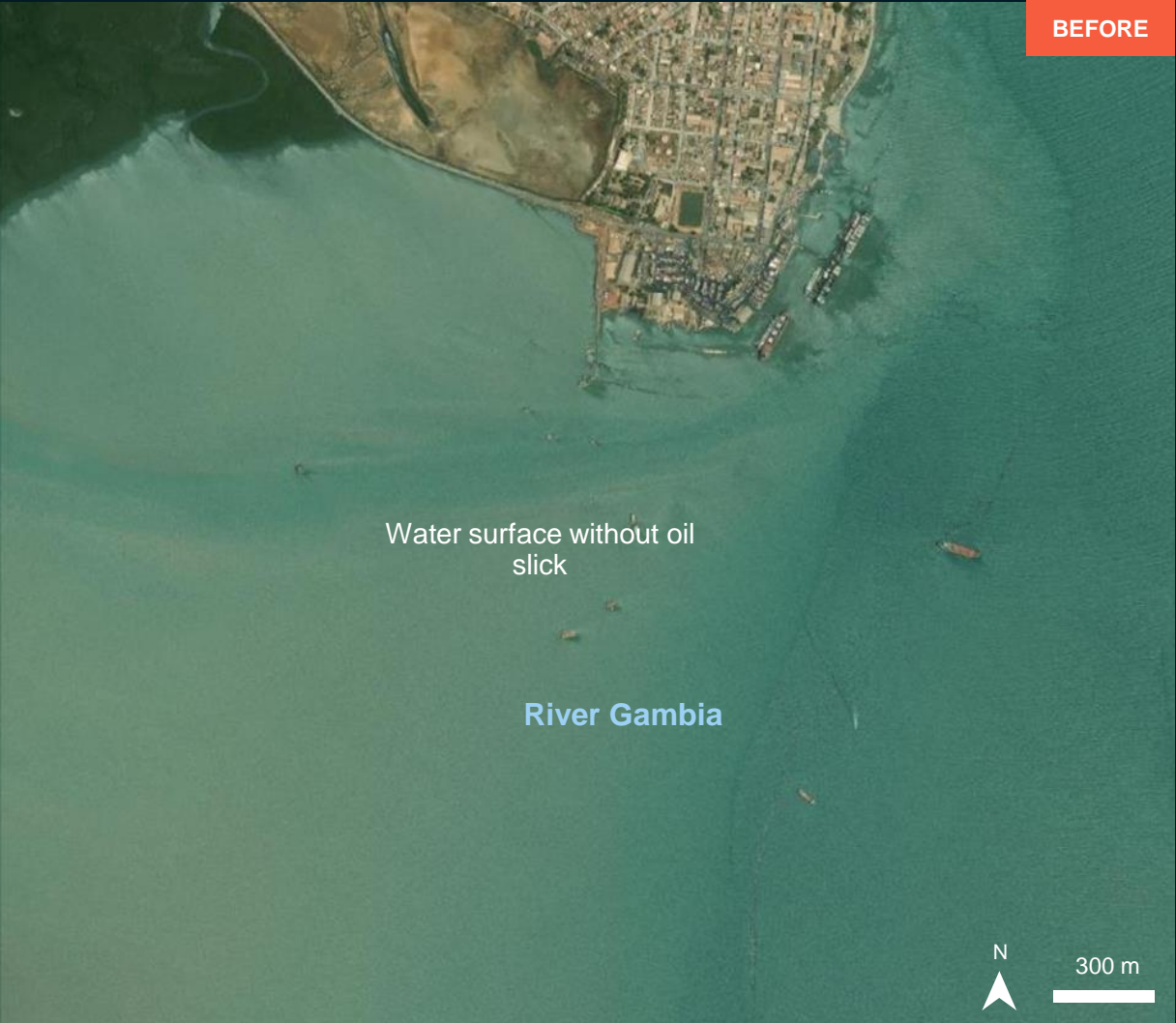
Potential oil slick

6-1- ALONG THE SHORELINE OF BANJUL TOWN 10 KM FROM MAIN FUEL DEPOT

Widespread potential oil film observed along the shoreline of Banjul town



Image center:
16°34'47.469"W
13°26'4.22"N



ESRI Basemap/Worldview-3/ 14 Jan. 2020



Pléiades / 8 Jun. 2022

AOI 6-1- ALONG THE SHORELINE OF BANJUL TOWN 10 KM FROM MAIN FUEL DEPOT

Widespread potential oil film observed along the shoreline of Banjul town



Potential oil film



Potential oil film



Potential oil film



Ship

Ship

Ship

Ship

River Gambia

Potential oil film



Potential oil film



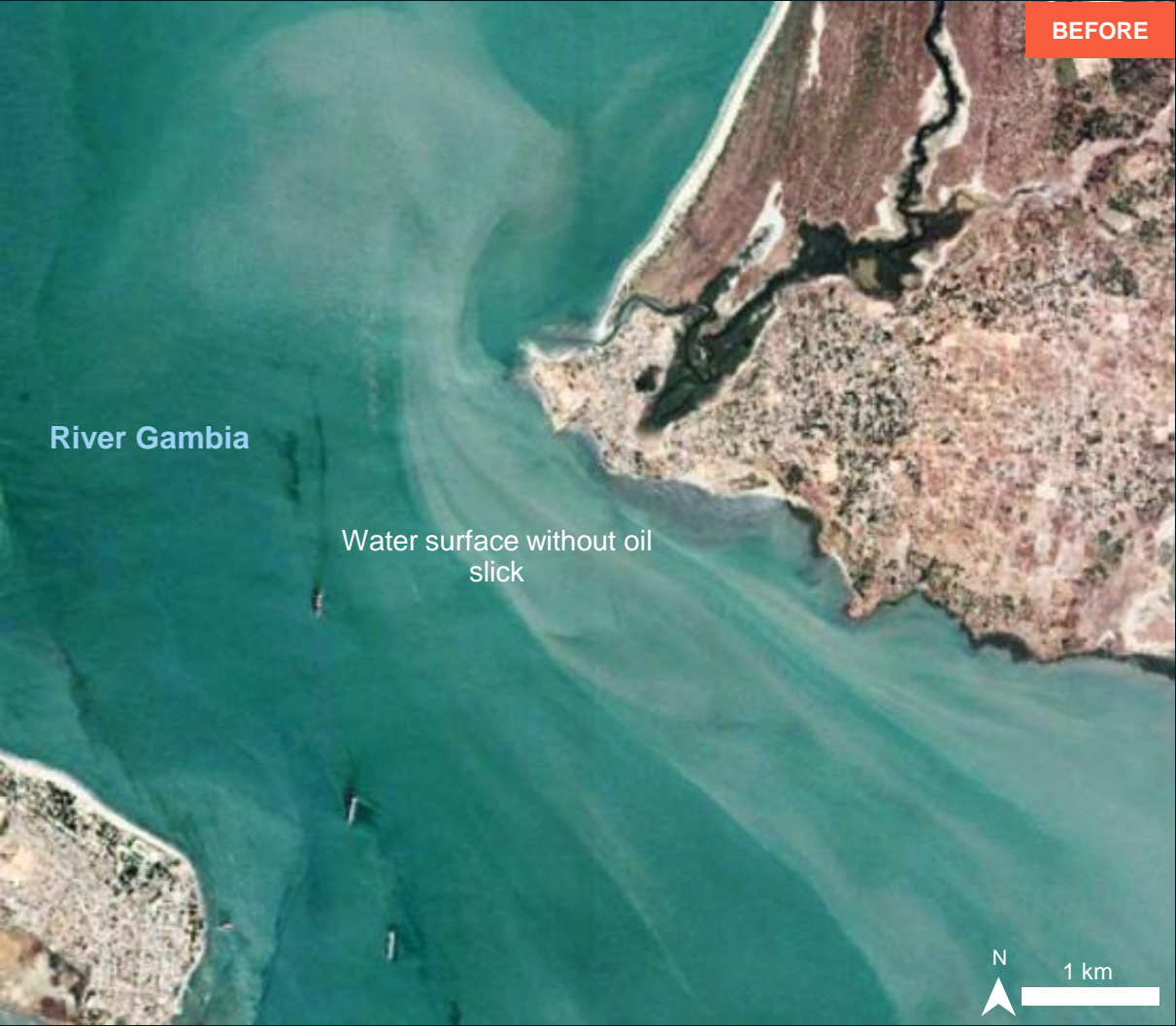
200 m

6-2- ALONG THE SHORELINE OF BANJUL TOWN 13 KM FROM MAIN FUEL DEPOT

Widespread potential oil slicks observed over the River Gambia



Image center:
16°32'55.283"W
13°28'55.693"N



Google Earth/ Apr. 2020



Pléiades / 8 Jun. 2022

AOI 6-2- ALONG THE SHORELINE OF BANJUL TOWN 13 KM FROM MAIN FUEL DEPOT

Widespread potential oil slicks observed over the River Gambia



SUMMARY OF FINDINGS

- Widespread potential oil film and oil slick is observed over the River Gambia as of 08 Jun. 2022;
- Potential oil film and oil slick observed far away about 20 km from the main fuel depot in cloud-free area as of 8 Jun. 2022;
- Potential oil film and oil slick observed along the main fuel depot shoreline as of 08 Jun. 2022;
- Potential oil film and oil slick observed along Banjul town shoreline as of 08 Jun. 2022.

COPYRIGHTS AND SOURCES

Data sources:

(1) Satellite Image (Post-event)

Satellite : Pléiades image
Imagery Date : 8 Jun. 2022 at 11:50 UTC
Resolution : 50 cm
Copyright: © CNES (2022), Distribution Airbus DS.
Source: Airbus DS

(2) Satellite Image (Pre-event)

ESRI based map
Google Earth

(3) Ancillary data

Populate place: OpenStreetMap
Administrative boundaries: WFP

Analysis: United Nations Satellite Centre (UNOSAT)
Production: United Nations Satellite Centre (UNOSAT)

 **@UNOSAT**

 **@UNITAR.unosat**



UNOSAT, United Nations Institute for Training
and Research (UNITAR)
7 bis, Avenue de la Paix, CH-1202 Geneva 2,
Switzerland

T +41 22 917 4720
E unosat@unitar.org
www.unosat.org