



20 Jan 2022

PRELIMINARY SATELLITE-DERIVED FLOOD ASSESSMENT

Sao Tome and Principe

 Status: Impact on structures & transportation network. Areas affected by floods and landslides

 Further action(s): Continue monitoring



SAO TOME AND PRINCIPE

AOI 2



Principe

SAO TOME AND PRINCIPE



AOI 1

Sao Tome

AOI 1-1 ALONG THE SHORELINE NEAR THE SÃO TOMÉ INTERNATIONAL AIRPORT

Inundated structures and road observed near the coast



Sentinel-2 image acquired on 30 December 2021
Image Center :6°42'46.248"E 0°22'20.016"N

AOI 1-1 ALONG THE SHORELINE NEAR THE SAO TOME INTERNATIONAL AIRPORT

Inundated area

Image center:
6°42'26.889"E
0°22'12.649"N



Sentinel-2 / 14 Apr 2021



Sentinel-2 / 30 December 2021

AOI 1-1 ALONG THE SHORELINE NEAR THE SAO TOME INTERNATIONAL AIRPORT

Decreased waters

Image center:
6°42'26.889"E
0°22'12.649"N



Sentinel-2 / 30 December 2021



Sentinel-2 / 14 Jan 2022

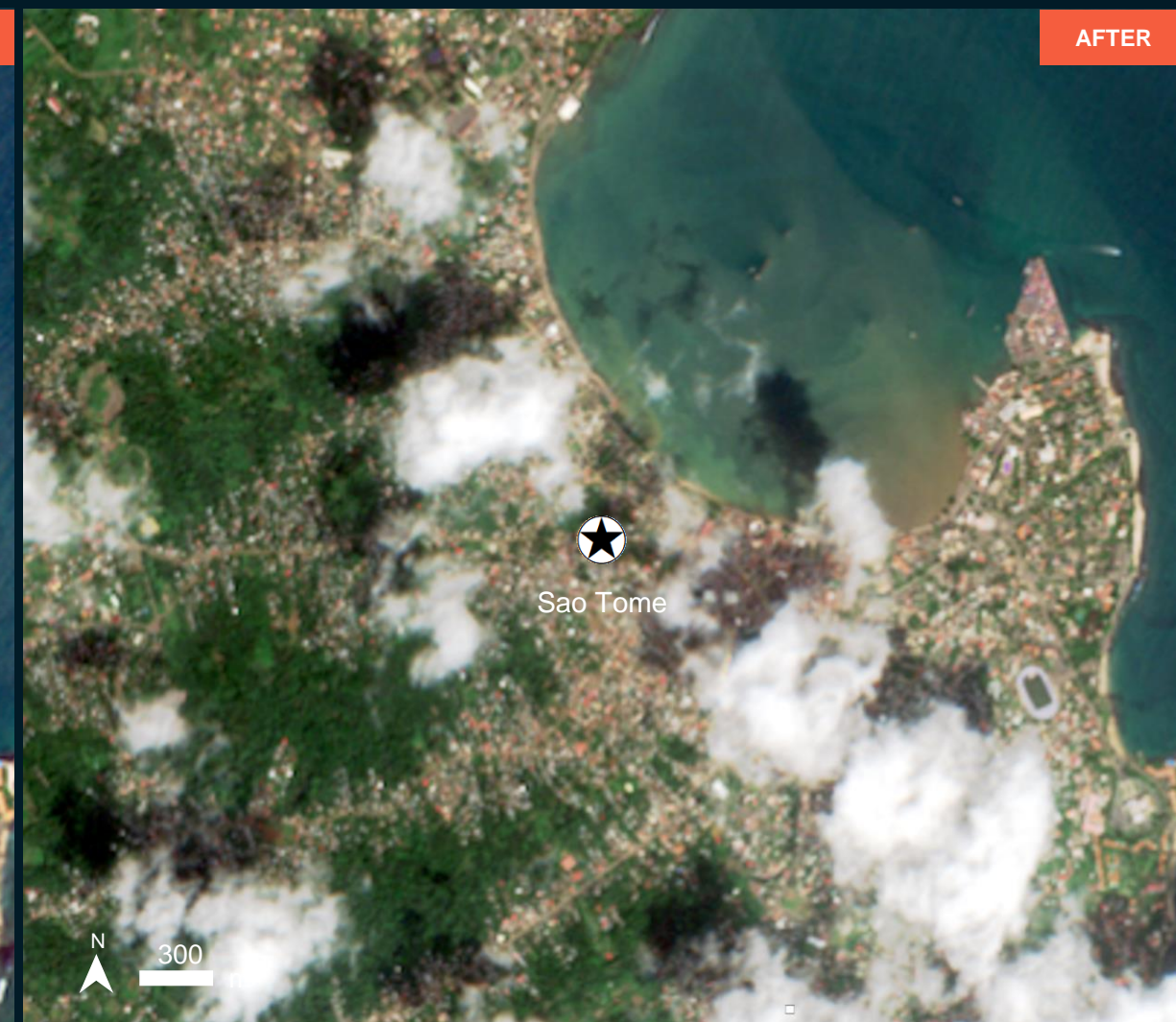
AOI 1-2 SÃO TOMÉ CAPITAL, AGUA GRANDE DISTRICT, SÃO TOMÉ PROVINCE

No major floods observed

Image center:
6°43'27.228"E
0°20'24.157"N



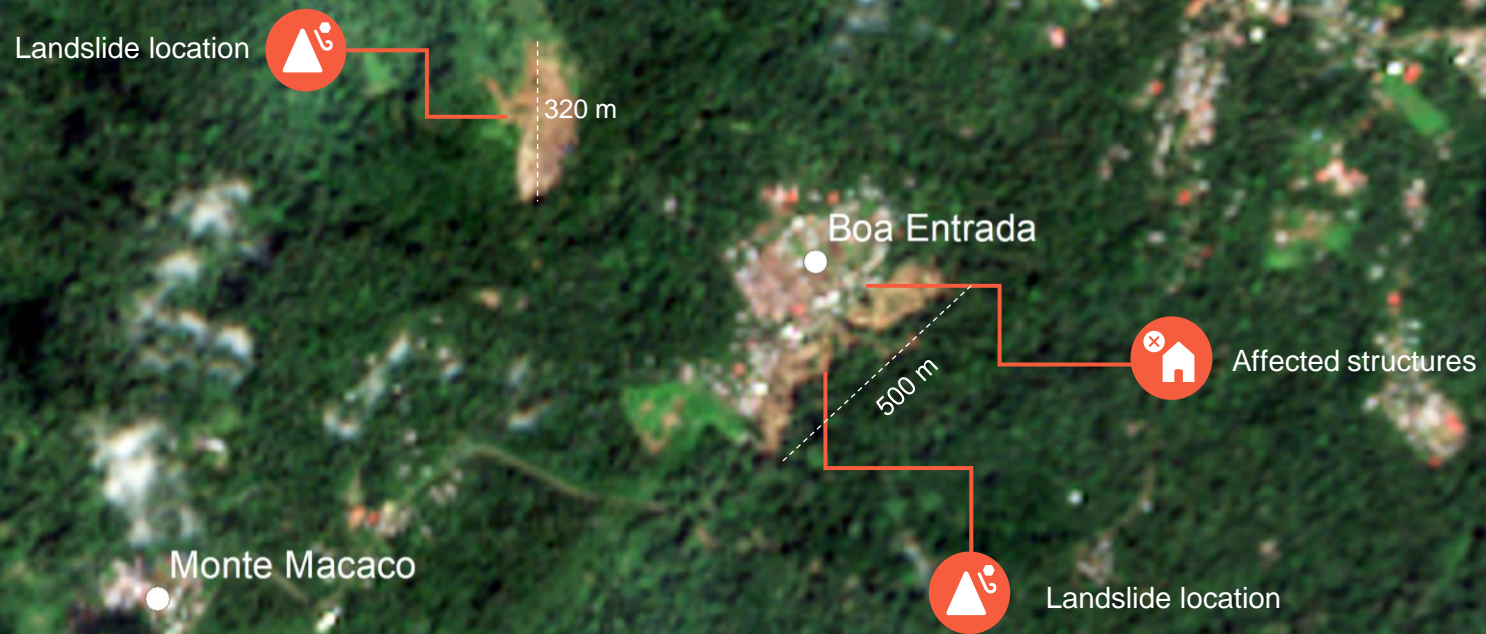
Sentinel-2 / 25 Nov 2021



Sentinel-2 / 30 December 2021

AOI 1-3 BOA ENTRADA VILLAGE, LOBATA DISTRICT, SÃO TOMÉ PROVINCE

Affected structures affected by landslides



AOI 1-3 BOA ENTRADA VILLAGE, LOBATA DISTRICT, SÃO TOMÉ PROVINCE

Affected structures affected by landslides

Image center:
6°39'49.3"E
0°21'7.65"N



Sentinel-2 / 4 Apr 2021



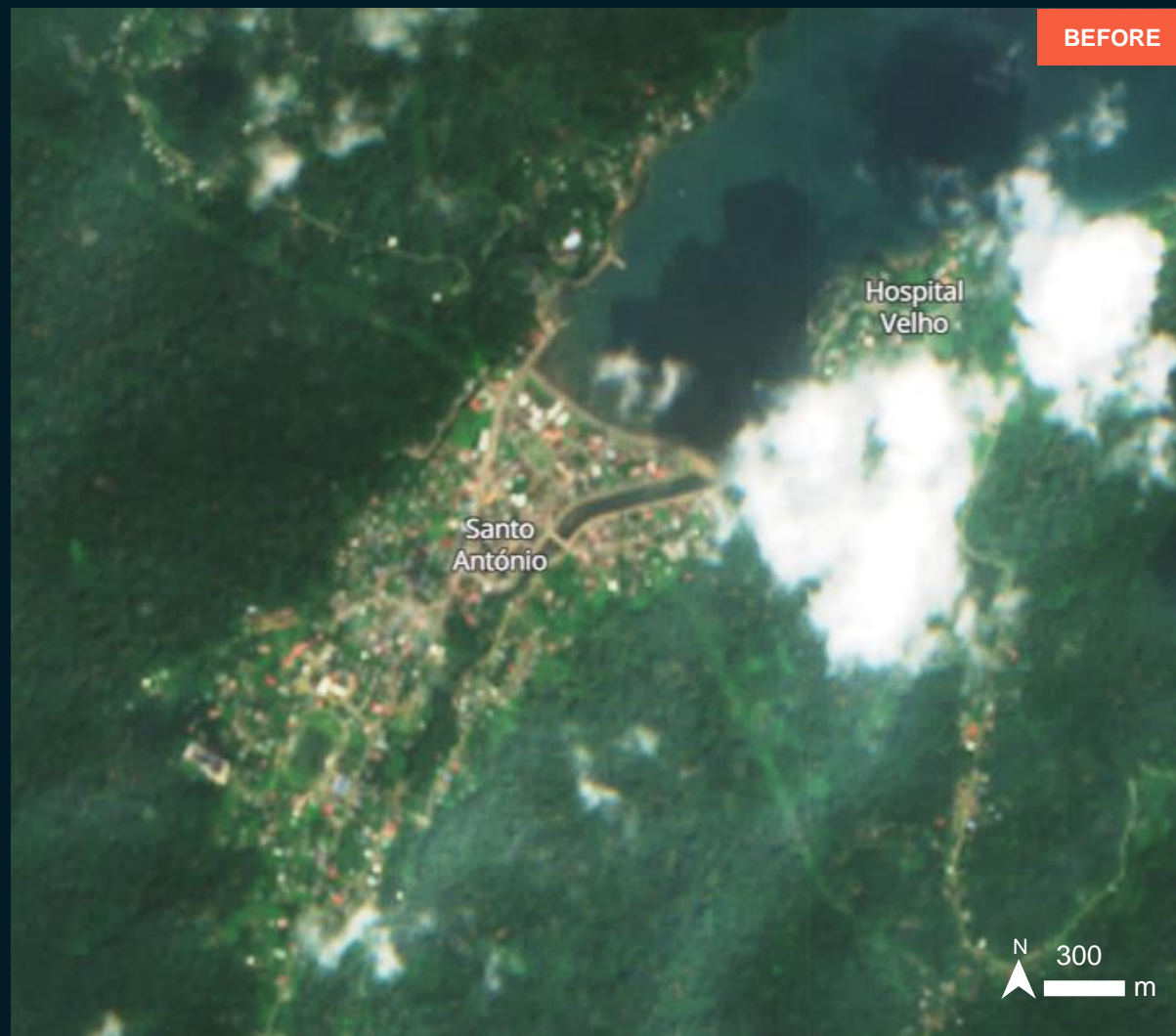
Sentinel-2 / 30 December 2021

AOI 2-1 SANTO ANTÓNIO SETTLEMENT, PAGUÉ DISTRICT, PRÍNCIPE PROVINCE

No major floods or landslides observed

Image center:
1°38'19.17"N
7°25'16.09"E

Príncipe



Sentinel-2 / 25 Dec 2021



Sentinel-2 / 19 Jan 2022

SUMMARY OF FINDINGS

- Inundated areas along the coast near São Tomé International airport observed as of 30 Dec 2021;
- Decreasing waters areas observed along the coast near São Tomé International airport as of 14 Jan 2022;
- No major floods observed in São Tomé Capital, Agua Grande District, São Tomé Province as of 30 Dec 2021;
- Affected structures affected by landslide observed as of 30 Dec 2021;
- No major floods or landslides observed in Santo António Settlement, Pagué District, Príncipe Province as of 19 Jan 2022;

COPYRIGHTS AND SOURCES

Data sources:

(1) Satellite Image (Post-event)

Sentinel-2 : 30 Dec 2021 and 14 & 19 Jan 2022

Resolution: 10m

Copyright: Contains modified Copernicus Sentinel Data [2022]

Source: ESA

(2) Satellite Image (Pre-event)

Sentinel-2 : 4 & 14 Apr 2021, 25 Nov 2021, 25 & 30 Dec 2021

Resolution: 10m

Copyright: Contains modified Copernicus Sentinel Data [2022]

Source: ESA

(3) Ancillary data

Administrative boundaries: GADM, OCHA West and Central Africa (ROWCA)

Analysis: United Nations Satellite Centre (UNOSAT)

Production: United Nations Satellite Centre (UNOSAT)



@UNOSAT



@UNITAR.unosat



UNOSAT, United Nations Institute for Training
and Research (UNITAR)
7 bis, Avenue de la Paix, CH-1202 Geneva 2,
Switzerland

T +41 22 917 4720
E unosat@unitar.org
www.unosat.org