


10 September 2021

PRELIMINARY SATELLITE-DERIVED FLOOD ASSESSMENT



Kilo Arba refugee camp, Al Jabalain District,
White Nile State, Sudan

 Status: flood waters observed

 Further action(s): continue monitoring

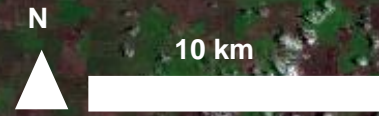


SUDAN

10 September 2021



Satellite detected waters in Al Jabalain district



As Salam / Ar Rawat

Sudan

Inundated area

Al Jabalain

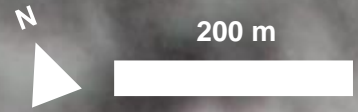
White Nile river

Area of interest

South Sudan

Khor Umm Dilwis river

Satellite detected waters in Al Jabalain district



White Nile State

Al Jabalain

See inset for close-up view

القناع

Kilo Arba refugee camp



Flooded structures

SUMMARY OF FINDINGS

- Large parts of Kilo Arba refugee camp appear to be flooded as of 10 September 2021;
- Flooded structures observed in Al Qinaa hamlet as of 10 September 2021.

COPYRIGHTS AND SOURCES

(1) Satellite Image (Post-event)

Pleiades / 10 September 2021

Copyright: CNES (2021), distribution Airbus D&S

Source : Airbus DS

Sentinel-2 / 04 September 2021

Copyright: Contains modified Copernicus Sentinel data [2021]

Source : ESA

(2) Ancillary data

Administrative boundaries: OCHA, HDX

Populated places: OpenStreetMap

Waterways: OpenStreetMap

Analysis: United Nations Satellite Centre (UNOSAT)

Production: United Nations Satellite Centre (UNOSAT)

 **@UNOSAT**

 **@UNITAR.unosat**



UNOSAT, United Nations Institute for Training
and Research (UNITAR)
7 bis, Avenue de la Paix, CH-1202 Geneva 2,
Switzerland

T +41 22 917 4720
E unosat@unitar.org
www.unosat.org